

## Product datasheet for **RC202654**

### WIPI2 (NM\_015610) Human Tagged ORF Clone

#### Product data:

Product Type:	Expression Plasmids
Product Name:	WIPI2 (NM_015610) Human Tagged ORF Clone
Tag:	Myc-DDK
Symbol:	WIPI2
Synonyms:	ATG18B; Atg21; CGI-50; IDDSSA; WIPI-2
Mammalian Cell Selection:	Neomycin
Vector:	pCMV6-Entry (PS100001)
E. coli Selection:	Kanamycin (25 ug/mL)



[View online »](#)

**ORF Nucleotide Sequence:**

>RC202654 ORF sequence  
 Red=Cloning site Blue=ORF Green=Tags(s)

TTTTGTAATACGACTCACTATAGGGCGGCCGGGAATTCGTCGACTGGATCCGGTACCGAGGAGATCTGCC  
 GCC**CGGATCGCC**

ATGAACCTGGCGAGCCAGAGCGGGAGGCCGGCGCCGAGCTGCTCTTCGCCAACTTCAACCAGGACA  
 ACACAGAAGTGAAGGGGCATCAAGAGCAGCTGGTCTTGCCGTCGCGCTGTTGTCTGGCCCTAGCTGT  
 TGGTAGTAAGTCCGGTTATAAATTTTTCTCCCTTTCTTCTGTGGATAAGCTGGAACAGATCTATGAATGC  
 ACCGATACGGAAGATGTGTGCATTGTAGAGAGATTGTTCTCCAGCAGCCTAGTGGCCATCGTGAGCCTTA  
 AAGCACCAAGGAAGCTAAAGGTTTGCCACTTTAAGAAGGGAAGTGAATCTGCAACTACAGCTACTCCAA  
 CACGATTCTGGCTGTGAAGCTCAACAGGCAGAGGCTGATAGTATGCCTGGAGGAGTCCCTGTACATCCAC  
 AACATTCGGGACATGAAGGTGCTGCATACGATCAGGGAGACGCCTCCAAACCTGCAGGCCTGTGTGCGC  
 TGTCATCAACAACGACAACCTGCTACTTGGCGTACCCAGGGAGCGGACCATCGGAGAGGTGCAGGTCTT  
 CGATACCATTAATTTGAGAGCTGCAAAACATGATTCGGCTCACGACAGTCTTTAGCGGCACTGGCCTTT  
 GACGCAAGTGGAACTAAACTTGCCACGGCTTCGGAGAAGGGGACCGTGATTAGGGTATTTCCATCCAG  
 AAGGACAAAACTCTTTGAGTTTCGGAGAGGAGTAAAGAGGTGCGTGTGAGCATCTGCTCCCTGGCCTTCAG  
 CATGGACGGCATGTTCTCTCCGCTCCAGCAACTGAGACCGTGCACATCTTCAAACCTCGAGACTGTG  
 AAAGAAAAACCCAGAGGAGCCACCCTGGACCGGTAATTCGGGAAAGTGCTCATGGCCTCCACCA  
 GCTACCTGCCTTCCCAAGTGACAGAAATGTTCAACCAGGGCAGAGCCTTCGCCACGGTCCGCCTGCCATT  
 CTGCGGCCACAAAACATCTGCTCGCTAGCCACAATTGAGAAGATCCCGCGGTTGTTGGTGGGTGCCGCC  
 GACGGGTACCTGTACATGTACAACCTGGACCCCAAGGAGGGCGGAGTGTGCCCTGATGAAGCAGCACC  
 GGCTGGACGGCAGTCTGGAAACGACCAATGAGATCTTGGACTCTGCCTCTCACGACTGCCCTTATGTCAC  
 TCAGACATACGGCGCAGCTGCAGGAAAAGTACTTACGTGCCTTCATCCCAACGAGACTTGCCTACACA  
 GACGACCTGGGTGCTGTGGGTGGCGCCTGCCTGGAGGACGAGCCAGCGCCTGCCTGGATGAGGACA  
 GCGAGCACCCGCCATGATTCTTCGGACTGAC

**ACGCGT**ACGCGGCCGCTCGAGCAGAACTCATCTCAGAAGAGGATCTGGCAGCAAATGATATCCTGGATT  
 ACAAGGATGACGACGATAAGGTTTAA

**Protein Sequence:**

>RC202654 protein sequence  
 Red=Cloning site Green=Tags(s)

MNLAQSQGEAGAGQLLFANFNQDNTEVKGASRAAGLRRAVVWSLAVGSKSGYKFFSLSSVDKLEQIYEC  
 TDTEDEVCIIVERLFSSSLVAIVSLKAPRKLKVCHFKKGTICNYSYSNTILAVKLNQRILVCLLESLYIH  
 NIRDMLVHTIRETTPNPAGLCALSINNDNCYLAYPGSATIGEVQVFDITNLRAANMIPAHDSPLAALAF  
 DASGKTLATASEKGTIVIRVFSIPEGQKLFEFRRGVKRCVSIKSLAFSMDGMFLSASNTETVHIFKLETV  
 KEKPPEEPTTWTGYFGKVLMASTSYLPSQVTEMFNQGRAFATVRLPFCGHKNICSLATIQQIPRLLVGAA  
 DGYLYMYNLDPQEGGECALMKQHRLDGSLTNEILDSASHDCPLVTQTYGAAAGKGTYPSSPTRLAYT  
 DDLGAVGGACLEDEASALRLDEDESEHPPMILRTD

**TR**TRPLEQKLISEEDLAANDILDYKDDDDKV

**Chromatograms:**

[https://cdn.origene.com/chromatograms/mk6436\\_d06.zip](https://cdn.origene.com/chromatograms/mk6436_d06.zip)

**Restriction Sites:**

Sgfl-Mlul

**Cloning Scheme:**


**ACCN:** NM\_015610

**ORF Size:** 1362 bp

**OTI Disclaimer:** The molecular sequence of this clone aligns with the gene accession number as a point of reference only. However, individual transcript sequences of the same gene can differ through naturally occurring variations (e.g. polymorphisms), each with its own valid existence. This clone is substantially in agreement with the reference, but a complete review of all prevailing variants is recommended prior to use. [More info](#)

**OTI Annotation:** This clone was engineered to express the complete ORF with an expression tag. Expression varies depending on the nature of the gene.

**Components:** The ORF clone is ion-exchange column purified and shipped in a 2D barcoded Matrix tube containing 10ug of transfection-ready, dried plasmid DNA (reconstitute with 100 ul of water).

**Reconstitution Method:**

1. Centrifuge at 5,000xg for 5min.
2. Carefully open the tube and add 100ul of sterile water to dissolve the DNA.
3. Close the tube and incubate for 10 minutes at room temperature.
4. Briefly vortex the tube and then do a quick spin (less than 5000xg) to concentrate the liquid at the bottom.
5. Store the suspended plasmid at -20°C. The DNA is stable for at least one year from date of shipping when stored at -20°C.

**RefSeq:** [NM\\_015610.2](#), [NP\\_056425.1](#)

**RefSeq Size:** 4489 bp

**RefSeq ORF:** 1365 bp

**Locus ID:** 26100

**UniProt ID:** [Q9Y4P8](#)

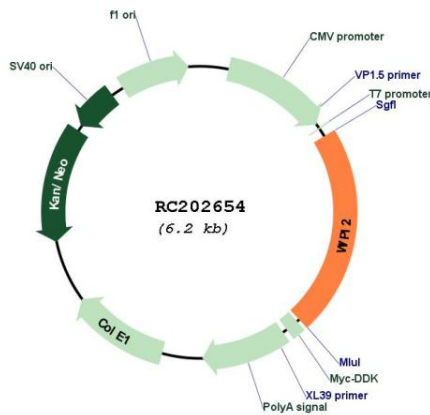
**Cytogenetics:** 7p22.1

**Domains:** WD40

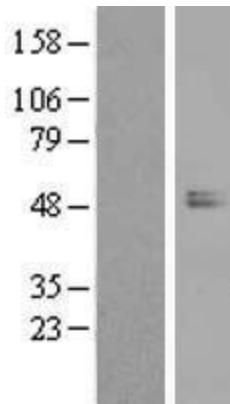
**MW:** 49.4 kDa

**Gene Summary:** WD40 repeat proteins are key components of many essential biologic functions. They regulate the assembly of multiprotein complexes by presenting a beta-propeller platform for simultaneous and reversible protein-protein interactions. Members of the WIPI subfamily of WD40 repeat proteins, such as WIPI2, have a 7-bladed propeller structure and contain a conserved motif for interaction with phospholipids (Proikas-Cezanne et al., 2004 [PubMed 15602573]).[supplied by OMIM, Mar 2008]

**Product images:**



Circular map for RC202654



Western blot validation of overexpression lysate (Cat# [LY414456]) using anti-DDK antibody (Cat# [TA50011-100]). Left: Cell lysates from untransfected HEK293T cells; Right: Cell lysates from HEK293T cells transfected with RC202654 using transfection reagent MegaTran 2.0 (Cat# [TT210002]).