

## Product datasheet for **RC202650**

### **RING1 (NM\_002931) Human Tagged ORF Clone**

#### Product data:

Product Type:	Expression Plasmids
Product Name:	RING1 (NM_002931) Human Tagged ORF Clone
Tag:	Myc-DDK
Symbol:	RING1
Synonyms:	RING1A; RNF1
Mammalian Cell Selection:	Neomycin
Vector:	pCMV6-Entry (PS100001)
E. coli Selection:	Kanamycin (25 ug/mL)
ORF Nucleotide Sequence:	>RC202650 ORF sequence Red=Cloning site Blue=ORF Green=Tags(s)

TTTTGTAATACGACTCACTATAGGGCGGCCGGAATTCGTCGACTGGATCCGGTACCGAGGAGATCTGCC  
GCC**CGATCGCC**

ATGACGACGCCGCGAATGCCAGAATGCCAGCAAACGTGGAACTGAGTCTGTATGAGCTGCACCGGA  
CCCCGAGGAAGCCATAATGGATGGCACAGAGATTGCTGTTTCCCCTCGGTCAGTGCATTGAGAATCAT  
GTGCCCTATCTGCCTGGACATGCTGAAGAATACGATGACCACCAAGGAGTGCCTCCACAGATTCTGCTCT  
GACTGCATTGTCACAGCCCTACGGAGCGGGAACAAGGAGTGTCTACCTGCCGAAAGAAGCTGGTGTCCA  
AGCGATCCCTACGGCCAGACCCCAACTTTGATGCCCTGATCTCTAAGATCTATCCTAGCCGGGAGGAATA  
CGAGGCCATCAAGACCGAGTGCTTATCCGCCTGAGCCGCTGCACAACCAGCAGGCATTGAGCTCCAGC  
ATTGAGGAGGGGCTACGCATGCAGGCCATGCACAGGGCCAGCGTGTGAGGCGGCCGATACCGAGGTCAG  
ATCAGACCACAACGATGAGTGGGGGGAAGGAGAGCCCGGGGAGGGAGAAGGGGATGGAGAAGATGTGAG  
CTCAGACTCCGCCCTGACTCTGCCCCAGGCCCTGCTCCCAAGCGACCCCGTGGAGGGGGCGAGGGGGG  
AGCAGTGTAGGGACAGGGGGAGGCGCACTGGTGGGGTGGGTGGGGTCCCGGTTCCGAAGACTCTGGT  
ACCGGGGAGGGACTCTGGGAGGGGGAACGCTGGGCCCCCAAGCCCTCCTGGGCCCCCAGCCCCCAGA  
GCCAGGTGGAGAAATTGAGCTCGTGTCCGCCCCACCCCTGCTCGTGGAGAAGGGAGAATACTGCCAG  
ACGAGGTATGTGAAGACAACACTGGGAATGCCACAGTGGACCACCTCTCAAGTACTTGGCCCTGCGCATTG  
CCCTCGAGCGGAGGCAACAGCAGGAAGCAGGGGAGCCAGGAGGGCCTGGAGGGGGCGCCTCTGACACCGG  
AGGACCTGATGGGTGTGGCGGGGAGGGTGGGGTGCCGGAGGAGGTGACGGTCTGAGGAGCCTGCTTTG  
CCCAGCCTGGAGGGCGTCACTGAAAAGCAGTACACCATCTACATCGCACCTGGAGGCGGGCGTTACGA  
CGTTGAATGGCTCGTACCCCTGGAGCTGGTGAATGAGAAATTCTGGAAGGTGTCCCGGCCACTGGAGCT  
GTGCTATGCTCCCAAGGATCCAAAG

**ACGGT**ACGGCGCCGCTCGAGCAGAACTCATCTCAGAAGAGGATCTGGCAGCAAATGATATCTGGATT  
ACAAGGATGACGACGATAAGGTTTAA





**Reconstitution Method:**

1. Centrifuge at 5,000xg for 5min.
2. Carefully open the tube and add 100ul of sterile water to dissolve the DNA.
3. Close the tube and incubate for 10 minutes at room temperature.
4. Briefly vortex the tube and then do a quick spin (less than 5000xg) to concentrate the liquid at the bottom.
5. Store the suspended plasmid at -20°C. The DNA is stable for at least one year from date of shipping when stored at -20°C.

**RefSeq:** [NM\\_002931.4](#)

**RefSeq Size:** 1744 bp

**RefSeq ORF:** 1221 bp

**Locus ID:** 6015

**UniProt ID:** [Q06587](#)

**Cytogenetics:** 6p21.32

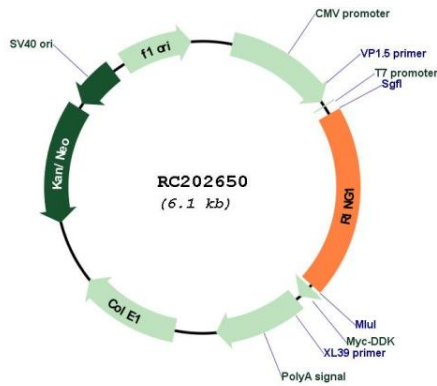
**Domains:** RING

**Protein Families:** Druggable Genome, Transcription Factors

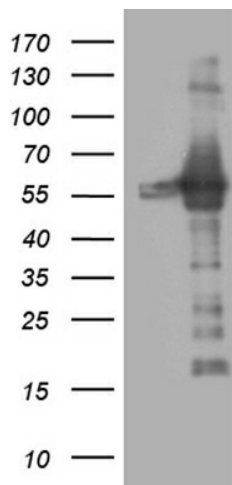
**MW:** 42.4 kDa

**Gene Summary:** This gene belongs to the RING finger family, members of which encode proteins characterized by a RING domain, a zinc-binding motif related to the zinc finger domain. The gene product can bind DNA and can act as a transcriptional repressor. It is associated with the multimeric polycomb group protein complex. The gene product interacts with the polycomb group proteins BMI1, EDR1, and CBX4, and colocalizes with these proteins in large nuclear domains. It interacts with the CBX4 protein via its glycine-rich C-terminal domain. The gene maps to the HLA class II region, where it is contiguous with the RING finger genes FABGL and HKE4. [provided by RefSeq, Jul 2008]

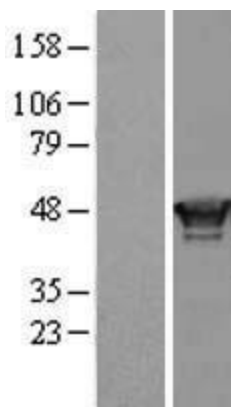
Product images:



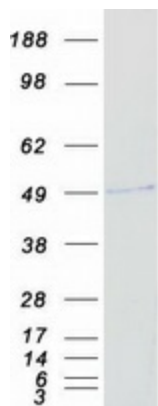
Circular map for RC202650



HEK293T cells were transfected with the pCMV6-ENTRY control (Cat# [PS100001], Left lane) or pCMV6-ENTRY RING1 (Cat# RC202650, Right lane) cDNA for 48 hrs and lysed. Equivalent amounts of cell lysates (5 ug per lane) were separated by SDS-PAGE and immunoblotted with anti-RING1 (Cat# [TA809319])(1:2000). Positive lysates [LY401023] (100ug) and [LC401023] (20ug) can be purchased separately from OriGene.



Western blot validation of overexpression lysate (Cat# [LY401023]) using anti-DDK antibody (Cat# [TA50011-100]). Left: Cell lysates from untransfected HEK293T cells; Right: Cell lysates from HEK293T cells transfected with RC202650 using transfection reagent MegaTran 2.0 (Cat# [TT210002]).



Coomassie blue staining of purified RING1 protein (Cat# [TP302650]). The protein was produced from HEK293T cells transfected with RING1 cDNA clone (Cat# RC202650) using MegaTran 2.0 (Cat# [TT210002]).