

Product datasheet for **RC202649**

CLCC1 (NM_015127) Human Tagged ORF Clone

Product data:

Product Type:	Expression Plasmids
Product Name:	CLCC1 (NM_015127) Human Tagged ORF Clone
Tag:	Myc-DDK
Symbol:	CLCC1
Synonyms:	MCLC; RP32
Mammalian Cell Selection:	Neomycin
Vector:	pCMV6-Entry (PS100001)
E. coli Selection:	Kanamycin (25 ug/mL)



[View online »](#)

ORF Nucleotide Sequence:

>RC202649 ORF sequence
 Red=Cloning site Blue=ORF Green=Tags(s)

TTTTGTAATACGACTCACTATAGGGCGGCCGGAATTCGTCGACTGGATCCGGTACCGAGGAGATCTGCC
 GCC**GCGATCGCC**

ATGCTGTGTTCTTTGCTCCTTTGTAATGTCTGTTGCTGGTAGCTGGTTATGCTCATGATGACTGGA
 TTGACCCACAGACATGCTTAACATATGATGCTGCTTCAGGAACAATGAGAAAATCTCAGGCAAAATATGG
 TATTTTCAGGGGAAAAGGATGTCAGTCTGACTTGTTCATGTGCTGATGAAATATCAGAATGTTATCAGAAA
 CTTGATTCTTTAACTTATAAGATTGATGAGTGTGAAAAGAAAAGAGGGAAGACTATGAAAGTCAAAGCA
 ATCCTGTTTTTAGGAGATACTTAAATAAGATTTTAATTGAAGCTGGAAAGCTTGGACTTTTTTCATGATTT
 TGAAACATGGAAGTGGCGATTGGAAGATTCCTTTGGAGTGGATCCATATAATGTGTTAATGGTACTTCTT
 TGTCTGCTCTGCATCGTGGTTTTAGTGGCTACCGAGCTGTGGACATATGTACGTTGGTACACTCAGTTGA
 GACGTGTTTTAATCATCAGCTTTCTGTTCACTTTGGGATGGAATTGGATGATTTTATATAAGCTAGCTTT
 TGCACAGCATCAGGCTGAAGTCGCAAGATGGAGCCATTAACAATGTGTGTGCCAAAAAGATGGACTGG
 ACTGGAAGTATCTGGGAATGGTTTGAAGTTCATGGACCTATAAGGATGACCCATGCCAAAAATACTATG
 AGCTCTTACTAGTCAACCCTATTTGGTTGGTCCCACCACAAAGGCACTTGCAGTTACATTCACCACATT
 TGTAAACGGAGCCATTGAAGCATATTGAAAAGGAACTGGGGAATTTATTAAGCACTCATGAAGGAAATT
 CCAGCGCTGCTTCATCTCCAGTCTGATAAATTATGGCATTAGCCATCCTGAGTTTCTGCTATGGTGCTG
 GAAAATCAGTTTATGCTGAGACATATAGGCGGTCTGAGAGCGAACCTCCCAGGCACTTCGGCCACG
 GGATAGAAGACGGCAGGAGGAAATTGATTATAGACCTGATGGTGGAGCAGGTGATGCCGATTTCCATTAT
 AGGGGCCAAATGGGCCCACTGAGCAAGGCCCTTATGCCAAAACGTATGAGGGTAGAAGAGAGATTTTGA
 GAGAGAGAGATGTTGACTTGAGATTTTCACTGGCAACAAGAGCCCTGAAGTGTCTCCGGGCATTTGATGT
 ACCAGACGCAGAGGCACGAGAGCATCCACGGTGGTACCCAGTCATAAATCACCTGTTTTGGATACAAAG
 CCCAAGGAGACAGGTGGAATCCTGGGGGAAGGCACACCGAAAGAAAGCAGTACTGAAAGCAGCCAGTCGG
 CCAAGCCTGTCTCTGGCCAAGACACATCAGGGAATACAGAAGGTTACCCCGCAGCGGAAAAGGCCAGCT
 CAAGTCTGAAGCCGAGGACGCCAGCCAAGGCAGCACATACAGCCCCGAAGAGGTGTGGCTGGACCA
 CGTGGACAGGATCCGGTCAGCAGCCCCTGTGGC

ACGCGTACGCGGCCGCTCGAGCAGAACTCATCTCAGAAGAGGATCTGGCAGCAAATGATATCTGGATT
 ACAAGGATGACGACGATAAGGTTTAA

Protein Sequence:

>RC202649 protein sequence
 Red=Cloning site Green=Tags(s)

MLCSLLLCELLL VAGYAHDDWIDPTDMLNYDAASGTMRSQAKYGISGEKDVSPDLSCADEISECYHK
 LDSLTYKIDECEKKKREDYESQSNPVFRRYLNKILIEAGKLG L FHFDFETWKWRFEDSFGVDPYNVLMVLL
 CLLCIVVLVATELWTVYRWTQLRRVLIISFLFSLGWNWMLYKLAFAAQHQAEVAKMEPLNVC AKKMDW
 TGSIWFWFRSSWTYKDDPCQKYELLVNPIWLV PPTKALAVTFTTFVTEPLKHIGKGTGEFIKALMKEI
 PALLHLPVLIIMALA ILSFCY GAGKSVHVL RHIGGPESEPPQALRPRDRRRQEEIDYRPDGGAGDADFHY
 RGQMGPT EQGPYAKTYEGRREILRERDVLRFQTGNKSPEVLR AFDPDAEAREHPTVVP SHKSPVLDTK
 PKETGGILGEGTPKESSTESSQSAKPVSGQDTS GNTGSPAAEKAQLKSEAAGSPDQGSTYSPARGVAGP
 RGQDPVSSPCG

TRTRPLEQKLISEEDLAANDILDYKDDDDKV

Chromatograms:

https://cdn.origene.com/chromatograms/mk6150_h10.zip

Restriction Sites:

Sgfl-Mlul

Cloning Scheme:


ACCN: NM_015127

ORF Size: 1503 bp

OTI Disclaimer: The molecular sequence of this clone aligns with the gene accession number as a point of reference only. However, individual transcript sequences of the same gene can differ through naturally occurring variations (e.g. polymorphisms), each with its own valid existence. This clone is substantially in agreement with the reference, but a complete review of all prevailing variants is recommended prior to use. [More info](#)

OTI Annotation: This clone was engineered to express the complete ORF with an expression tag. Expression varies depending on the nature of the gene.

Components: The ORF clone is ion-exchange column purified and shipped in a 2D barcoded Matrix tube containing 10ug of transfection-ready, dried plasmid DNA (reconstitute with 100 ul of water).

- Reconstitution Method:**
1. Centrifuge at 5,000xg for 5min.
 2. Carefully open the tube and add 100ul of sterile water to dissolve the DNA.
 3. Close the tube and incubate for 10 minutes at room temperature.
 4. Briefly vortex the tube and then do a quick spin (less than 5000xg) to concentrate the liquid at the bottom.
 5. Store the suspended plasmid at -20°C. The DNA is stable for at least one year from date of shipping when stored at -20°C.

Note: Plasmids are not sterile. For experiments where strict sterility is required, filtration with 0.22um filter is required.

RefSeq: [NM_015127.2](#), [NP_055942.1](#)

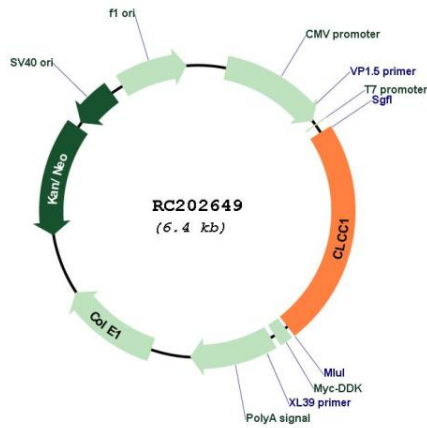
RefSeq Size: 4695 bp

RefSeq ORF: 1506 bp

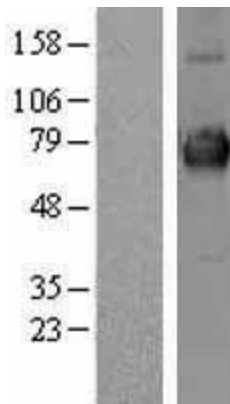
Locus ID: 23155

UniProt ID: [Q96S66](#)
Cytogenetics: 1p13.3
Protein Families: Ion Channels: Other, Transmembrane
MW: 56.3 kDa
Gene Summary: Seems to act as a chloride ion channel.[UniProtKB/Swiss-Prot Function]

Product images:



Circular map for RC202649



Western blot validation of overexpression lysate (Cat# [LY402409]) using anti-DDK antibody (Cat# [TA50011-100]). Left: Cell lysates from untransfected HEK293T cells; Right: Cell lysates from HEK293T cells transfected with RC202649 using transfection reagent MegaTran 2.0 (Cat# [TT210002]).