

Product datasheet for **RC202647**

GLUT9 (SLC2A9) (NM_001001290) Human Tagged ORF Clone

Product data:

Product Type:	Expression Plasmids
Product Name:	GLUT9 (SLC2A9) (NM_001001290) Human Tagged ORF Clone
Tag:	Myc-DDK
Symbol:	GLUT9
Synonyms:	GLUT9; GLUTX; UAQTL2; URATv1
Mammalian Cell Selection:	Neomycin
Vector:	pCMV6-Entry (PS100001)
E. coli Selection:	Kanamycin (25 ug/mL)



[View online »](#)

ORF Nucleotide Sequence:

>RC202647 ORF sequence
 Red=Cloning site Blue=ORF Green=Tags(s)

TTTTGTAATACGACTCACTATAGGGCGGCCGGAATTCGTCGACTGGATCCGGTACCGAGGAGATCTGCC
 GCC**GCGATCGCC**

ATGAAGCTCAGTAAAAAGACCAGGAGAGAAGATGAAGAAAGTGATTTCAGCGAAAAAGAAATGGACTGGT
 CCTGCTCGCTCCTCGTGGCCTCCCTCGCGGGCGCCTTCGGCTCCTCCTCTACGGCTACAACCTGTC
 GGTGGTGAATGCCCCACCCCGTACATCAAGGCCTTTTACAATGAGTCATGGGAAAGAAGGCATGGACGT
 CCAATAGACCCAGACACTCTGACTCTGCTCTGGTCTGTGACTGTGTCCATATTCGCCATCGGTGGACTTG
 TGGGGACATTAATTGTGAAGATGATTGGAAAGTTCTTGGGAGGAAGCACACTTTGCTGGCCAATAATGG
 GTTTGCAATTTCTGCTGCATTGCTGATGGCCTGCTCGCTCCAGGCAGGAGCCTTTGAAATGCTCATCGTG
 GGACGCTTCATCATGGGCATAGATGGAGGCGTCGCCCTCAGTGTGCTCCCATGTACCTCAGTGAGATCT
 CACCCAAGGAGATCCGTGGCTCTCTGGGCAGGTGACTGCCATCTTTATCTGCATTGGCGTGTTCACTGG
 GCAGCTTCTGGGCTGCCGAGCTGCTGGGAAAGGAGAGTACCTGGCCATACCTGTTTGGAGTGATTGTG
 GTCCTGCGGTTGTCCAGCTGCTGAGCCTTCCTTTCTCCCGGACAGCCACGCTACCTGCTCTTGAGA
 AGCACAACGAGGCAAGAGCTGTAAAGCCTTCCAACGTTCTTGGGTAAGCAGACGTTTCCAAGAGGT
 AGAGGAGTCTGGCTGAGAGCCGCTGCAGAGGAGCATCCGCTGGTGTCCGTGCTGGAGCTGCTGAGA
 GCTCCCTACGTCGCTGGCAGGTGGTACCCTGATTGTACCATGGCCTGCTACCAGCTCTGTGGCCTCA
 ATGCAATTTGGTCTATACCAACAGCATCTTTGGAAAAGCTGGATCCCTCTGGCAAAGATCCCATACGT
 CACCTTGAGTACAGGGGGCATCGAGACTTTGGCTGCCGCTTCTCTGGTTTGGTCATTGAGCACCTGGGA
 CGGAGACCCCTCCTCATTGGTGGCTTTGGGCTCATGGGCTCTTCTTTGGGACCCCTACCATCACGCTTT
 CCTGTCAGGACCACGCCCCCTGGTCCCCTACCTGAGTATCGTGGGCATCTGGCCATCATCGCCTTTT
 CTGCAGTGGGCCAGGTGGCATCCCGTTTCACTTTGACTGGTGAGTTCTTCCAGCAATCTCAGCGGCCGCT
 GCCTTCATCATTGCAGGCACCGTCAACTGGCTCTCCAACCTTGGCTGTTGGGCTCCTCTTCCATTATTC
 AGAAAAGTCTGGACACCTACTGTTTCTAGTCTTTGCTACAATTTGTATCACAGGTGCTATCTACCTGTA
 TTTTGTGCTGCCTGAGACCAAAAACAGAACCTATGCAGAAATCAGCCAGGCATTTTCCAAAAGGAACAAA
 GCATACCACAGAGAGAAAATCGACTCAGCTGTCACTGATGGTAAGATAAATGGAAAGCCT

ACGCGTACGCGGCCGCTCGAGCAGAAACTCATCTCAGAAGAGGATCTGGCAGCAATGATATCTGGATT
 ACAAGGATGACGACGATAAGGTTTAA

Protein Sequence:

>RC202647 protein sequence
 Red=Cloning site Green=Tags(s)

MKLSKKDRGEDEESDSAKKKLDWSCSLLVASLAGAFGSSFLYGYNL SVVNAPTPYIKAFYNESWERRHGR
 PIDPDTLLWSVTVSIFAIGGLVGTLLIVKMIGKVLGRKHTLLANNGFAISAALLMACSLQAGAFEMLIIV
 GRFIMGIDGGVALSVLPMYLSSEISPKAIRGSLGQVTAIFICIGVFTGQLLGLPELLGKESTWPYLFVIV
 VPAVVQLLSLPFLPDSPRYLLLEKHNEARAVKAFQTLGKADVSQEVVEVLAESRVQRSIRLVSVLELLR
 APYVRWQVVTIVTMACYQLCGLNAIWFYTNISIFGKAGIPLAKIPYVTLSTGGIETLAAVFSGLVIEHLG
 RRPLLIGGFGLMGLFFGTLTITLTLQDHAPWVPYLSIVGILAIIASFCSGPGGIPFILTGEFFQQSORPA
 AFIIAGTVNWL SNFAVGLLFPFIQKSLDTCFLVFATICITGAIYLYFVLPETKNRTYAEISQAFSKRNK
 AYPPEEKIDSAVTDGKINGRP

TRTRPLEQKLISEEDLAANDILDYKDDDDKV

Chromatograms:

https://cdn.origene.com/chromatograms/mk6154_b04.zip

Restriction Sites:

Sgfl-Mlul

Cloning Scheme:


ACCN: NM_001001290

ORF Size: 1533 bp

OTI Disclaimer: The molecular sequence of this clone aligns with the gene accession number as a point of reference only. However, individual transcript sequences of the same gene can differ through naturally occurring variations (e.g. polymorphisms), each with its own valid existence. This clone is substantially in agreement with the reference, but a complete review of all prevailing variants is recommended prior to use. [More info](#)

OTI Annotation: This clone was engineered to express the complete ORF with an expression tag. Expression varies depending on the nature of the gene.

Components: The ORF clone is ion-exchange column purified and shipped in a 2D barcoded Matrix tube containing 10ug of transfection-ready, dried plasmid DNA (reconstitute with 100 ul of water).

Reconstitution Method:

1. Centrifuge at 5,000xg for 5min.
2. Carefully open the tube and add 100ul of sterile water to dissolve the DNA.
3. Close the tube and incubate for 10 minutes at room temperature.
4. Briefly vortex the tube and then do a quick spin (less than 5000xg) to concentrate the liquid at the bottom.
5. Store the suspended plasmid at -20°C. The DNA is stable for at least one year from date of shipping when stored at -20°C.

RefSeq: [NM_001001290.1](#), [NP_001001290.1](#)

RefSeq Size: 1885 bp

RefSeq ORF: 1536 bp

Locus ID: 56606

UniProt ID: [Q9NRM0](#)

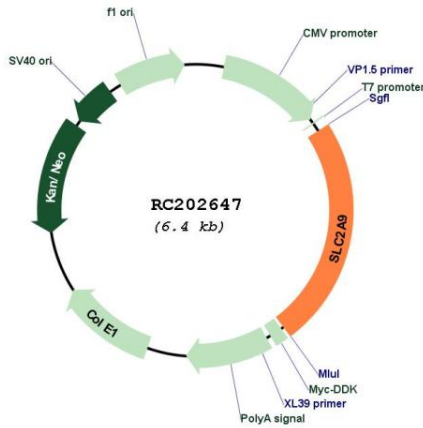
Cytogenetics: 4p16.1

Protein Families: Transmembrane

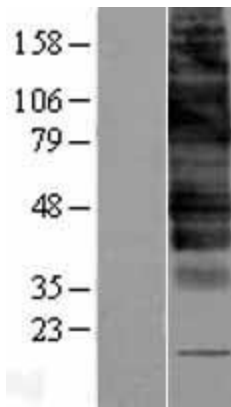
MW: 55.7 kDa

Gene Summary: This gene encodes a member of the SLC2A facilitative glucose transporter family. Members of this family play a significant role in maintaining glucose homeostasis. The encoded protein may play a role in the development and survival of chondrocytes in cartilage matrices. Two transcript variants encoding distinct isoforms have been identified for this gene. [provided by RefSeq, Jul 2008]

Product images:



Circular map for RC202647



Western blot validation of overexpression lysate (Cat# [LY400368]) using anti-DDK antibody (Cat# [TA50011-100]). Left: Cell lysates from untransfected HEK293T cells; Right: Cell lysates from HEK293T cells transfected with RC202647 using transfection reagent MegaTran 2.0 (Cat# [TT210002]).