

## Product datasheet for RC202645

### BRMS1L (NM\_032352) Human Tagged ORF Clone

#### Product data:

Product Type:	Expression Plasmids
Product Name:	BRMS1L (NM_032352) Human Tagged ORF Clone
Tag:	Myc-DDK
Symbol:	BRMS1L
Synonyms:	BRMS1
Mammalian Cell Selection:	Neomycin
Vector:	pCMV6-Entry (PS100001)
E. coli Selection:	Kanamycin (25 ug/mL)
ORF Nucleotide Sequence:	>RC202645 ORF sequence Red=Cloning site Blue=ORF Green=Tags(s)

TTTTGTAATACGACTCACTATAGGGCGGCCGGAATTCGTCGACTGGATCCGGTACCGAGGAGATCTGCC  
GCC**CGATCGCC**

ATGCCAGTCCATCCCGAGGGGATAAGAAGGAGACCAACCATCACGATGAGATGGAGGTGGACTACGCCG  
AAAATGAGGGGAGCAGCTCCGAGGACGAGGACACTGAGAGCTCGTCGGTCTCCGAGGATGGAGATAGCTC  
AGAAATGGATGATGAAGACTGTGAAAGAAGAAGAATGGAATGTTGGATGAAATGTCCAATCTTGAAAAA  
CAGTTTACCGATCTCAAAGATCAACTTTATAAAGAACGATTAAGTCAGGTGGATGCAAACTACAAGAAG  
TCATAGCTGGAAGCACCAGAATACTTGAACCGCTGGCAACTTACAGGAAAAATGCAAATTCGTAC  
AAAGGTAGCAGGAATCTATAGAGAGCTCTGCTTAGAATCTGTAAGAACAATATGAATGTGAAATTCAA  
GCTTCTCGCCAGCATTGTGAGAGCGAAAAGCTGTTGCTATATGATACAGTCCAGAGTGAAGTAGAGGAGA  
AGATAAGAAGGCTTGAAGAGGATAGGCACAGCATTGATATTACCTCAGAGCTGTGGAATGATGAGCTTCA  
GTCAAGAAAAAGAGGAAGGATCCTTTCAGTCTGACAAAAAGAAGCCAGTTGTTGTTTCAGGTCCATAT  
ATAGTTTATATGCTACAAGATCTTGATATTCTTGAAGACTGGACAACAATTAGGAAGGCAATGGCTACAT  
TGGGGCCACACAGAGTGAACCGAACCCCTGTGAACTGGAAAAACATCTGCACAGTGCATAGATCTGA  
AGAGGGAAGACTATATTATGATGGTGAATGGTATATACGTGGACAACAATATGTATTGATAAAAAAGAT  
GAATGTCTACAAGTGTGTAATTACAACAATTAACCATGATGAAGTTTGGTTTAAAGAGGCTGATGGAA  
GCAAATCTAAGCTTTACATTTACAGCTACAGAAAGAAAAATTTCAATTAACATTCA

**ACGCGT**ACGCGGCCGCTCGAGCAGAAACTCATCTCAGAAGAGGATCTGGCAGCAATGATATCCTGGATT  
ACAAGGATGACGACGATAAGGTTTAA



[View online »](#)

**Protein Sequence:** >RC202645 protein sequence  
Red=Cloning site Green=Tags(s)

MPVHSRGDKKETNHHDEMEVDYAENEGSSSEDETESSVSSEDGDSSEMDDDCERRRMECLDEMSNLEK  
 QFTDLKDQLYKERLSQVDAKLQEVIAKGAPEYLEPLATLQENMQIRTKVAGIYRELCLESVKNKYECEIQ  
 ASRQHCESEKLLLYDTVQSELEEKIRRLEEDRHSIDITSELWNDELQSRKKRKPDPSPDKKKPVVSGPY  
 IVYMLQDLDILEDWTTIRKAMATLGPVRVKTPEPPVKLEKHLHSARSEEGRLLYYDGEWYIRGQTICIDKKD  
 ECPTSAVITTTINHDEVWFKRPDGSKSKLYISQLQKKGKYSIKHS

TRTRPLEQKLISEEDLAANDILDYKDDDDKV

**Chromatograms:** [https://cdn.origene.com/chromatograms/mk6076\\_g01.zip](https://cdn.origene.com/chromatograms/mk6076_g01.zip)

**Restriction Sites:** SgfI-MluI

**Cloning Scheme:**



**ACCN:** NM\_032352

**ORF Size:** 969 bp

**OTI Disclaimer:** The molecular sequence of this clone aligns with the gene accession number as a point of reference only. However, individual transcript sequences of the same gene can differ through naturally occurring variations (e.g. polymorphisms), each with its own valid existence. This clone is substantially in agreement with the reference, but a complete review of all prevailing variants is recommended prior to use. [More info](#)

**OTI Annotation:** This clone was engineered to express the complete ORF with an expression tag. Expression varies depending on the nature of the gene.

**Components:** The ORF clone is ion-exchange column purified and shipped in a 2D barcoded Matrix tube containing 10ug of transfection-ready, dried plasmid DNA (reconstitute with 100 ul of water).

**Reconstitution Method:**

1. Centrifuge at 5,000xg for 5min.
2. Carefully open the tube and add 100ul of sterile water to dissolve the DNA.
3. Close the tube and incubate for 10 minutes at room temperature.
4. Briefly vortex the tube and then do a quick spin (less than 5000xg) to concentrate the liquid at the bottom.
5. Store the suspended plasmid at -20°C. The DNA is stable for at least one year from date of shipping when stored at -20°C.

**RefSeq:** [NM\\_032352.4](#)

**RefSeq Size:** 2604 bp

**RefSeq ORF:** 972 bp

**Locus ID:** 84312

**UniProt ID:** [Q5PSV4](#)

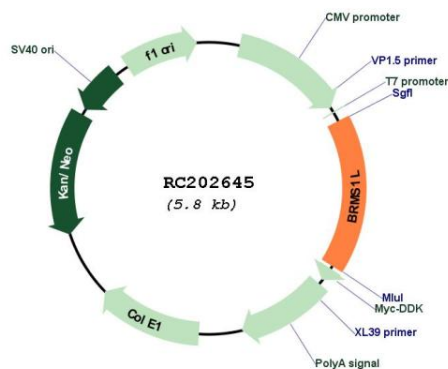
**Cytogenetics:** 14q13.2

**Protein Families:** Druggable Genome

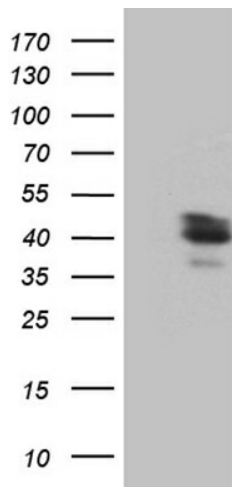
**MW:** 37.6 kDa

**Gene Summary:** The protein encoded by this gene shows sequence similarity to the human breast carcinoma metastasis suppressor (BRMS1) protein and the mammalian Sds3 (suppressor of defective silencing 3) proteins. This protein is a component of the mSin3a family of histone deacetylase complexes (HDAC). [provided by RefSeq, Jul 2008]

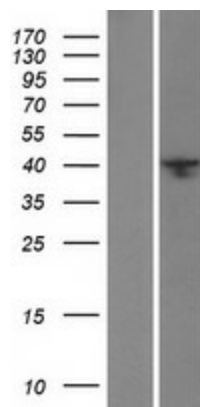
### Product images:



Circular map for RC202645



HEK293T cells were transfected with the pCMV6-ENTRY control (Cat# [PS100001], Left lane) or pCMV6-ENTRY BRMS1L (Cat# RC202645, Right lane) cDNA for 48 hrs and lysed. Equivalent amounts of cell lysates (5 ug per lane) were separated by SDS-PAGE and immunoblotted with anti-BRMS1L (Cat# [TA811037]). Positive lysates [LY410189] (100ug) and [LC410189] (20ug) can be purchased separately from OriGene.



Western blot validation of overexpression lysate (Cat# [LY410189]) using anti-DDK antibody (Cat# [TA50011-100]). Left: Cell lysates from untransfected HEK293T cells; Right: Cell lysates from HEK293T cells transfected with RC202645 using transfection reagent MegaTran 2.0 (Cat# [TT210002]).