

Product datasheet for **RC202641**

RPS6KL1 (NM_031464) Human Tagged ORF Clone

Product data:

Product Type:	Expression Plasmids
Product Name:	RPS6KL1 (NM_031464) Human Tagged ORF Clone
Tag:	Myc-DDK
Symbol:	RPS6KL1
Synonyms:	RSKL2
Mammalian Cell Selection:	Neomycin
Vector:	pCMV6-Entry (PS100001)
E. coli Selection:	Kanamycin (25 ug/mL)



[View online »](#)

ORF Nucleotide Sequence:

>RC202641 ORF sequence
 Red=Cloning site Blue=ORF Green=Tags(s)

TTTTGTAATACGACTCACTATAGGGCGGCCGGGAATTCGTCGACTGGATCCGGTACCGAGGAGATCTGCC
 GCC**GCGATCGCC**

ATGAGCCTGGTGGCCTGTGAGTGCCTGCCAGCCCCGGCCTGGAGCCTGAGCCTTGTCTACGAGCACGGT
 CCCAAGCTCACGTGTACCTGGAGCAGATTTCGCAACAGGGTGGCTCTGGGAGTGCCTGACATGACAAAACG
 TGAATCTGGTGGATGCGGCCACGCAGATCCGGCTGGCCTGGAGCGGATGTTAGTGAGGACTATGAG
 GCGGCCTCAACCACTATCAGAATGGCGTGGAGCTGCTGCTCCGTGGCATAACAGTTGACCCCAACAAGG
 AGCGAGCTGAGGCTGTGAAGCTGAAAATTACAAATACCTGCGCGGGCAGAGGAGATCTTCAACTGCCA
 CCTGCAGCGGCCCTGAGCAGTGGAGCCAGCCCCAGCGCGGTGCAGCTGGTCCAGGACCCGGCAACCGGA
 GGGACCTTTGTGGTGAAGAGCCTACCCAGGTGCCACATGGTGGAGAGGAGCGGCTGACCATCATCCAC
 ACGGAGTCCCCTACATGACGAAGCTGCTCAGGTACTTTGTGAGCGAGGACTCCATCTTCTGCACCTGGA
 GCATGTCAAGGAGGCACTCTGGTCCCACCTGCTCTCCAGGGCAGCTCCCGACATTCTGGGCTCAGC
 TCTGGCTCTACCCAGGAGAGGATGAAGGCTCAGCTCAACCCCCACCTCAACCTCCTGACCCAGCGAGGC
 TTCCCTCAGGCCATGCCCTGGCCAGGACAGAATCGCCCTGGAGCCTCCTAGGACTTCTCCGAACCTTCT
 CCTAGCTGGGGAGGCCCATCCACCAGACCCCAGAGGGAGGCTGAAGGTGAACCCACAGCCAGGACCAGC
 ACCTCTGGCTCCTCGGACCTTCCAAAGGCCAGGTGGCCACCTGCACCTTAAGCTAGGAGGGCTGGCC
 AGAACTCAGACGCTGGGCCCCCTCGGGGCTCACTTGGGTTCTGAGGGGGCCGGCCCGTGTAGGGGG
 CTGTGGCCGAGGCATGGATCAGAGCTGCCTGTGAGCAGATGGGGCCGGCCGGGCTGTGGCAGGGCCACC
 TGGAGTGTGAGAGAGGAGCAGGTGAAGCAGTGGCGGCAGAGATGCTGGTAGCGCTGGAGGCGCTGCACG
 AGCAGGGGGTGTGTGCCGGGACCTCCACCCGGGAACCTGCTCCTGGACCAGGCAGTACATCCGGCT
 CACATATTTTGGCCAGTGGTCCAGAGTGGAGCCCCAGTCTGCGGGGAGGCCGTGGACAATCTCTACAGC
 GCCCAGAGGTGGTGGGATTTCCGAGCTGACGGAAGCCTGTGACTGGTGGAGCTTTGGGCTCTACTGT
 ATGAACTGCTGACGGGAATGGCACTGTCCAGAGCCACCCTTCCAGGAATCCAGGCCACACCCAGCTCCA
 GCTGCCGAGTGGCTCAGTCGCCAGCGGCCTCTGCTGACTGAGCTGCTGCAGTTCGAGCCTACCCGG
 CGCCTGGGCATGGGAGAAGGTGGTGTGAGCAACTCAAGTCCCATCCCTTTTTCAGTACCATCCAATGGA
 GCAAGCTGGTGGGACATCTCTGGAGACTATCTCAGGACTGATCCACTGGCTCAGTGGACCCAAACC
 AGACTGCTCTGGC

ACGCGTACGCGGCCGCTCGAGCAGAAACTCATCTCAGAAGAGGATCTGGCAGCAAATGATATCCTGGATT
 ACAAGGATGACGACGATAAGGTTTAA

Protein Sequence:

>RC202641 protein sequence
 Red=Cloning site Green=Tags(s)

MSLVACECLPSPGLEPEPCSRARSQAHVYLEQIRNRVALGVPDMTKRDYLVDAATQIRLALERDVSSEDYE
 AAFNHYQNGVDVLLRGIHVDPNKERREAVKLKITYLRRAEEIFNCHLQRPLSSGASPSAVQLVQDPATG
 GTFVVKSLPRCHMVSRRERLTIIPHGVPMYTKLLRYFVSEDSIFLHLEHVQGGTLWSHLLSQAHSRHSGLS
 SGSTQERMKAQLNPHLNLTPARLPSGHAPGQDRIALEPPRTSPNLLLAGEAPSTRPQREAEGETARTS
 TSGSSDLPKAPGGHLHLQARRAQNSDAGPPRGLTWVPEGAGPVLGGCGRGMDQSCL SADGAGRCCGRAT
 WSVREEQVKQWAAEMLVALEALHEQVLCRDLHPGNLLLDQAGHIRLTYFGQWSEVEPQCCGEAVDNLYS
 APEVGGISEL TEACDWSFGSLLYELLTGMALSQSHPSGIQAHTQLQPEWLSRPAASLL TELLQFEPTR
 RLGMGEGGVSKLKSHPFFSTIQWSKLVGTSLETHLRTL IHWLSGPKPDCPG

TRTRPLEQKLI SEEDLAANDILDYKDDDDKV

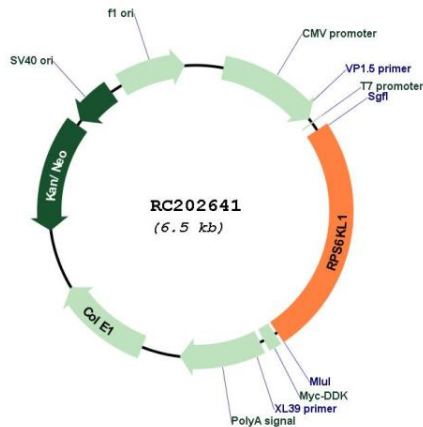
Chromatograms:

https://cdn.origene.com/chromatograms/mk6151_f09.zip

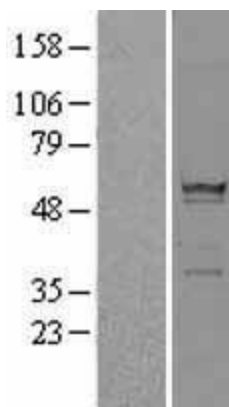
Restriction Sites:

Sgfl-MluI

Cytogenetics: 14q24.3
Domains: kinase, TyrKc, S_TKc, MIT
Protein Families: Druggable Genome, Protein Kinase
MW: 59.2 kDa

Product images:


Circular map for RC202641



Western blot validation of overexpression lysate (Cat# [LY403119]) using anti-DDK antibody (Cat# [TA50011-100]). Left: Cell lysates from untransfected HEK293T cells; Right: Cell lysates from HEK293T cells transfected with RC202641 using transfection reagent MegaTran 2.0 (Cat# [TT210002]).