

Product datasheet for **RC202640**

MAD2L1 binding protein (MAD2L1BP) (NM_014628) Human Tagged ORF Clone

Product data:

Product Type:	Expression Plasmids
Product Name:	MAD2L1 binding protein (MAD2L1BP) (NM_014628) Human Tagged ORF Clone
Tag:	Myc-DDK
Symbol:	MAD2L1 binding protein
Synonyms:	CMT2
Mammalian Cell Selection:	Neomycin
Vector:	pCMV6-Entry (PS100001)
E. coli Selection:	Kanamycin (25 ug/mL)
ORF Nucleotide Sequence:	>RC202640 ORF sequence Red=Cloning site Blue=ORF Green=Tags(s)

TTTTGTAATACGACTCACTATAGGGCGGCCGGAATTCGTCGACTGGATCCGGTACCGAGGAGATCTGCC
GCC**CGATCGCC**

ATGGCGGCGCGGAGGCGGAGGTTCTGTCCTCAGCCGAGTCCCTGATTGGAGTGGTATGAGAAGTCCG
AAGAACTCACGCCTCCAGATAGAACTACTTGAGACAAGCTCTACGCAGGAACCTCTCAACGCTTCGGA
GGCCTTTTGCCCAAGAGACTGCATGGTACCAGTGGTGTTCCTGGGCCTGTGAGCCAGGAAGGCTGCTGT
CAGTTTACTTGTGAAGTCTAAAGCATATCATGTATCAACGCCAGCAGCTCCCTCTGCCCTATGAACAGC
TTAAGCACTTTTACCGAAAACCTTCTCCCGAGGAGAGGAGATGCTGAAGAAGAAACCTCGGGCCACCAC
TGAGGTGAGCAGCAGGAAATGCCAACAAGCCCTGGCAGAACTGGAGAGTGTCTCAGCCACCTGGAGGAC
TTCTTTGCACGGACACTAGTACCGCAGTGTCTGATTCTCCTTGGGGGCAATGCCCTAAGCCCCAAGGAGT
TCTATGAAGTCACTTGTCTCTGCTGGCCCCCTACAGCGTGGACCAGAGCCTGAGCACAGCAGCTTGTTT
GCGCCGTCTCTCCGAGCCATATTCATGGCTGATGCCTTTAGCGAGCTTCAGGCTCCTCCACTCATGGGC
ACCGTCGTCATGGCACAGGGACACCGCAACTGTGGAGAAGATTGGTTTCGACCCAAGCTCAACTATCGAG
TGCCAGCCGGGGCCATAAACTGACTGTGACCTGTCTGTGGCAGACCTTCCATCCGAACCAAGGCTTG
GGAAGACTACATTTGGTTCCAGGCACCACTGACATTTAAAGGCTTCCGCGAG

ACGCGTACGCGGCGGCTCGAGCAGAACTCATCTCAGAAGAGGATCTGGCAGCAAATGATATCCTGGATT
ACAAGGATGACGACGATAAGGTTTAA



[View online »](#)

Protein Sequence: >RC202640 protein sequence
 Red=Cloning site Green=Tags(s)

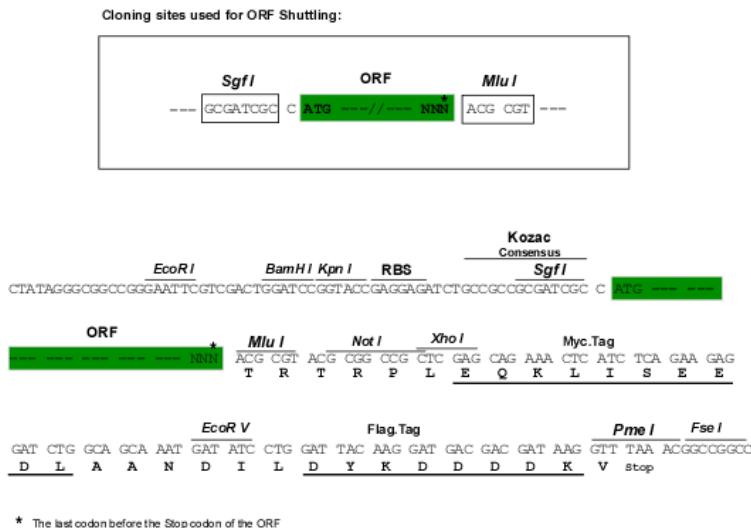
MAAPEAEVLSSAAVPDLEWYEKSEETHASQIELLETSSSQEPLNASEAF CPRDCMVPVFPVPGPVSQEGCC
 QFTCELLKHIMYQRQQLPLPYEQLKHFYRKPSQAEEMLKPKPRATTEVSSRKCCQALAELESVLSHLED
 FFARTLVPRVLILLGGNALSPKEFYELDL SLLAPYSVDQSLSTAACLRRLFRAIFMADAFSELQAPPLMG
 TVVMAQGHRNCGEDWFRPKLNYRVPSRGHKLTVTLSCGRPSIRTTAWEDYIWFQAPVTFKGFRE

TRTRPLEQKLISEEDLAANDILDYKDDDDKV

Chromatograms: https://cdn.origene.com/chromatograms/mk6085_c12.zip

Restriction Sites: SgfI-MluI

Cloning Scheme:



ACCN: NM_014628

ORF Size: 822 bp

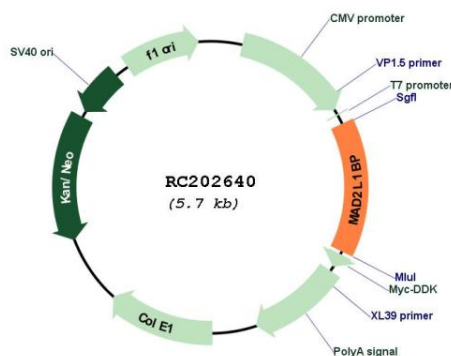
OTI Disclaimer: The molecular sequence of this clone aligns with the gene accession number as a point of reference only. However, individual transcript sequences of the same gene can differ through naturally occurring variations (e.g. polymorphisms), each with its own valid existence. This clone is substantially in agreement with the reference, but a complete review of all prevailing variants is recommended prior to use. [More info](#)

OTI Annotation: This clone was engineered to express the complete ORF with an expression tag. Expression varies depending on the nature of the gene.

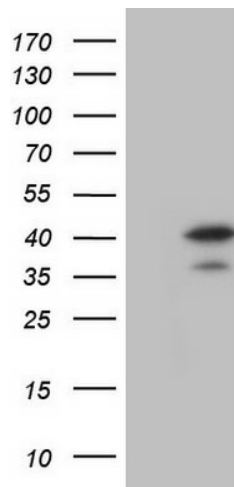
Components: The ORF clone is ion-exchange column purified and shipped in a 2D barcoded Matrix tube containing 10ug of transfection-ready, dried plasmid DNA (reconstitute with 100 ul of water).

Reconstitution Method:	<ol style="list-style-type: none"> 1. Centrifuge at 5,000xg for 5min. 2. Carefully open the tube and add 100ul of sterile water to dissolve the DNA. 3. Close the tube and incubate for 10 minutes at room temperature. 4. Briefly vortex the tube and then do a quick spin (less than 5000xg) to concentrate the liquid at the bottom. 5. Store the suspended plasmid at -20°C. The DNA is stable for at least one year from date of shipping when stored at -20°C.
RefSeq:	<u>NM_014628.3</u>
RefSeq Size:	1283 bp
RefSeq ORF:	825 bp
Locus ID:	9587
UniProt ID:	<u>Q15013</u>
Cytogenetics:	6p21.1
Protein Families:	Druggable Genome
MW:	31.1 kDa
Gene Summary:	<p>The protein encoded by this gene was identified as a binding protein of the MAD2 mitotic arrest deficient-like 1 (MAD2/MAD2L1). MAD2 is a key component of the spindle checkpoint that delays the onset of anaphase until all the kinetochores are attached to the spindle. This protein may interact with the spindle checkpoint and coordinate cell cycle events in late mitosis. Alternatively spliced transcript variants encoding distinct isoforms have been observed. [provided by RefSeq, Jul 2008]</p>

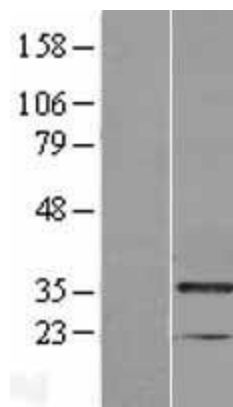
Product images:



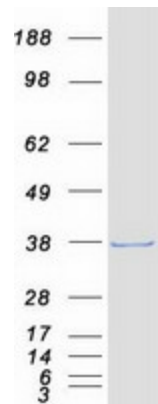
Circular map for RC202640



HEK293T cells were transfected with the pCMV6-ENTRY control (Cat# [PS100001], Left lane) or pCMV6-ENTRY MAD2L1BP (Cat# RC202640, Right lane) cDNA for 48 hrs and lysed. Equivalent amounts of cell lysates (5 ug per lane) were separated by SDS-PAGE and immunoblotted with anti-MAD2L1BP (Cat# [TA804860]). Positive lysates [LY402356] (100ug) and [LC402356] (20ug) can be purchased separately from OriGene.



Western blot validation of overexpression lysate (Cat# [LY402356]) using anti-DDK antibody (Cat# [TA50011-100]). Left: Cell lysates from untransfected HEK293T cells; Right: Cell lysates from HEK293T cells transfected with RC202640 using transfection reagent MegaTran 2.0 (Cat# [TT210002]).



Coomassie blue staining of purified MAD2L1BP protein (Cat# [TP302640]). The protein was produced from HEK293T cells transfected with MAD2L1BP cDNA clone (Cat# RC202640) using MegaTran 2.0 (Cat# [TT210002]).