

Product datasheet for **RC202635**

CHRDL1 (NM_145234) Human Tagged ORF Clone

Product data:

Product Type:	Expression Plasmids
Product Name:	CHRDL1 (NM_145234) Human Tagged ORF Clone
Tag:	Myc-DDK
Symbol:	CHRDL1
Synonyms:	CHL; dA141H5.1; MGC1; MGCN; NRLN1; VOPT
Mammalian Cell Selection:	Neomycin
Vector:	pCMV6-Entry (PS100001)
E. coli Selection:	Kanamycin (25 ug/mL)



[View online »](#)

ORF Nucleotide Sequence:

>RC202635 ORF sequence
 Red=Cloning site Blue=ORF Green=Tags(s)

TTTTGTAATACGACTCACTATAGGGCGGCCGGAATTCGTCGACTGGATCCGGTACCGAGGAGATCTGCC
 GCC**CGATCGCC**

ATGAGAAAAAGTGGAAATGGGAGGCATGAAATACATCTTTTCGTTGTTGTTCTTTCTTTTGTAGAAG
 GAGGCAAAACAGAGCAAGTAAAACATTCAGAGACATATTGCATGTTTCAAGACAAGAAGTACAGAGTGGG
 TGAGAGATGGCATCCTTACCTGGAACCTTATGGGTTGGTTTACTGCGTGAAGTGCATCTGCTCAGAGAAT
 GGGAAATGTGCTTTCAGCCGAGTCAAGTGTCCAAATGTTCAATGCCTTTCTCCTGTGCATATTCCTCATC
 TGTGCTGCCCTCGCTGCCAGACTCCTTACCCCAAGTGAACAATAAGGTGACCAGCAAGTCTTGCAGTA
 CAATGGGACAACCTACCAACATGGAGAGCTGTTCTGAGTGAAGGGCTTTTCAAGTCCGCAACCAAT
 CAATGCACCCAGTGCAGCTGTTCCGAGGAAACGTGATTGTGGTCTCAAGACTTGCCCAAAATTAACCT
 GTGCCCTCCAGTCTCTGTTCCAGATTCCTGCTGCCGGGTATGCAGAGGAGATGGAGAAGTGCATGGGA
 ACATTCTGATGGTGATATCTTCCGGCAACCTGCCAACAGAGAAGCAAGACATTCTTACCACCGCTCTCAC
 TATGATCCTCCACCAAGCCGACAGGCTGGAGGTCTGTCCCGCTTCTCCTGGGGCCAGAAGTACCCGGGGAG
 CTCTTATGGATCCCAGCAAGCATCAGGAACATTGTGCAAAATTGCATCAATAACAAACACAAGCATGG
 ACAAGTGTGTGTTTCAAATGAAAGACCTATTCTCATGGCGAGTCTGGCACCAAAACCTCCGGGCATTT
 GGCATTGTGGAGTGTGTGCTATGTACTTGTAAATGTCACCAAGCAAGAGTGAAGAAAATCCACTGCCCA
 ATCGATACCCCTGCAAGTATCCTCAAAAATAGACGGAAAATGCTGCAAGGTGTGTCCAGGTAAGAAAGC
 AAAAGAACTTCCAGGCCAAAGCTTTGACAATAAAGGCTACTTCTGCGGGGAAGAAACGATGCCTGTGTAT
 GAGTCTGTATTCATGGAGATGGGAGACAACCAAGAAAATAGCACTGGAGACTGAGAGACCACCTCAGG
 TAGAGGTCACCGTTTGGACTATTCGAAAGGGCATTCTCCAGCACTCCATATTGAGAAGATCTCCAAGG
 GATGTTTTGAGGAGCTTCCCTCACTCAAGCTGGTGACCAGAACAACCTGAGCCAGTGAAGATCTTCAAC
 GAAGGAGAAGCTCAGATCAGCCAGATGTGTTCAAGTCGTGATGCAGAACAGAGCTTGAAGATTTAGTCA
 AGGTTTTGTACTGGAGAGATCTGAAAAGGGCCACTGT

ACGCGTACGCGGCCGCTCGAGCAGAAACTCATCTCAGAAGAGGATCTGGCAGCAATGATATCCTGGATT
 ACAAGGATGACGACGATAAGGTTTAA

Protein Sequence:

>RC202635 protein sequence
 Red=Cloning site Green=Tags(s)

MRKKWKMGGMKYIFSLFFLLLEGGKTEQVKHSETYCMFQDKKYRVGERWHPYLEPYGLVYCVNCISEN
 GNVLCRSVRCPNVHCLSPVHIPHLCCPRCPDSLPPVNNKVTSKSCEYNGTTYQHGEFLVAEGLFQNRQPN
 QCTQCSCSEGNVYCGLKTCPKLTCAFPVSVDPDSCCRVCRGDGELSWEHSDGDI FRQPANREARHSYHRSH
 YDPPPSRQAGGLSRFPGARSHRGALMDSQQASGTIVQIVINNKHKHGQVCVSNKTYSHGESWHPNLRAF
 GIVECVLTCNVTKQECKIHCNRYPCYPQKIDGKCKVCPGKKAKELPGQSF DNKGYFCGEETMPVY
 ESVMEDGETTRKIALETERPPQVEVHWVIRKILQHFHIEKISKRMFEELPHFKLVTRTTL SQWKIFT
 EGEAQISQMCSRVCRTLEDLVKVL YLERSEK GHC

TRTRPLEQKLISEEDLAANDILDYKDDDDKV

Chromatograms:

https://cdn.origene.com/chromatograms/mk6085_c10.zip

Restriction Sites:

Sgfl-Mlul

Cloning Scheme:


ACCN: NM_145234

ORF Size: 1368 bp

OTI Disclaimer: The molecular sequence of this clone aligns with the gene accession number as a point of reference only. However, individual transcript sequences of the same gene can differ through naturally occurring variations (e.g. polymorphisms), each with its own valid existence. This clone is substantially in agreement with the reference, but a complete review of all prevailing variants is recommended prior to use. [More info](#)

OTI Annotation: This clone was engineered to express the complete ORF with an expression tag. Expression varies depending on the nature of the gene.

Components: The ORF clone is ion-exchange column purified and shipped in a 2D barcoded Matrix tube containing 10ug of transfection-ready, dried plasmid DNA (reconstitute with 100 ul of water).

- Reconstitution Method:**
1. Centrifuge at 5,000xg for 5min.
 2. Carefully open the tube and add 100ul of sterile water to dissolve the DNA.
 3. Close the tube and incubate for 10 minutes at room temperature.
 4. Briefly vortex the tube and then do a quick spin (less than 5000xg) to concentrate the liquid at the bottom.
 5. Store the suspended plasmid at -20°C. The DNA is stable for at least one year from date of shipping when stored at -20°C.

RefSeq: [NM_145234.4](#)

RefSeq Size: 3943 bp

RefSeq ORF: 1371 bp

Locus ID: 91851

UniProt ID: [Q9BU40](#)

Cytogenetics: Xq23

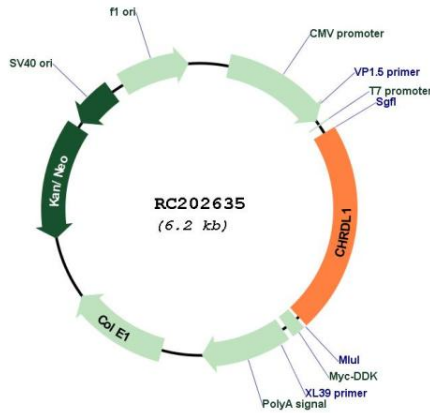
Domains: VWC

Protein Families: ES Cell Differentiation/IPS, Secreted Protein

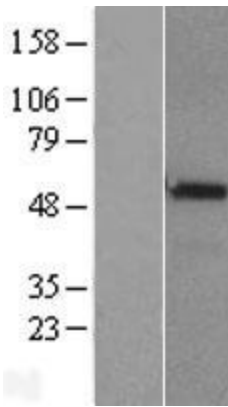
MW: 52 kDa

Gene Summary: This gene encodes an antagonist of bone morphogenetic protein 4. The encoded protein may play a role in topographic retinotectal projection and in the regulation of retinal angiogenesis in response to hypoxia. Alternatively spliced transcript variants encoding different isoforms have been described. [provided by RefSeq, Jan 2009]

Product images:



Circular map for RC202635



Western blot validation of overexpression lysate (Cat# [LY407971]) using anti-DDK antibody (Cat# [TA50011-100]). Left: Cell lysates from untransfected HEK293T cells; Right: Cell lysates from HEK293T cells transfected with RC202635 using transfection reagent MegaTran 2.0 (Cat# [TT210002]).