

Product datasheet for **RC202633**

ABHD3 (NM_138340) Human Tagged ORF Clone

Product data:

Product Type:	Expression Plasmids
Product Name:	ABHD3 (NM_138340) Human Tagged ORF Clone
Tag:	Myc-DDK
Symbol:	ABHD3
Synonyms:	LABH3
Mammalian Cell Selection:	Neomycin
Vector:	pCMV6-Entry (PS100001)
E. coli Selection:	Kanamycin (25 ug/mL)
ORF Nucleotide Sequence:	>RC202633 ORF sequence Red=Cloning site Blue=ORF Green=Tags(s)

TTTTGTAATACGACTCACTATAGGGCGGCCGGAATTCGTCGACTGGATCCGGTACCGAGGAGATCTGCC
GCC**CGATCGCC**

ATGCAGTGCCTGGCCATGGACCTGCGGATGTTGTCCCGGGAGCTCTCCCTCTACCTGGAACACCAAGTCC
GGGTGGGTTCTTCGGCTCGGGGTGGGCTTATCCCTTATCTGGGCTTCAGCGTCGCTTATGCCTTCTA
CTACCTGAGCAGCATTGCCAAGAAACCCAGTTAGTGACCGGGGTGAGAGTTTCAGCCGCTTCTTCAA
GACCACTGTCCCGTGGTTACAGAAACGTACTACCCGACGGTCTGGTCTGGGAGGGTTCGAGGACAGACCC
TGCTTAGACCTTTCATCACTTCAAGCCCCGGTGCAGTACAGGAATGAACCTTATAAAACCTGCAGATGG
AGGACAGATTTCACTGGACTGGTTTGATAATGATAACAGTACGTGTTATATGGATGCCAGCACCAGACCT
ACTATCTTATTGTTGCCTGGCCTCACGGGAACAAGCAAGGAGTCATATATCCTTCATATGATCCATCTTA
GTGAAGAATTAGGATACAGATGTGTGGTTTTAAACAACAGAGGAGTGGCGGGGAGAATCTCTTGACGCC
AAGGACTTATTGTTGTGCTAACACTGAAGACTGGAGACAGTTATTCACCATGTACACAGCCTGTACCCCT
TCTGCTCCTTTCCTGGCAGCAGGGGTTCAATGGGAGGAATGCTGCTTCTAAATTAATTTGGGCAAAATTG
GGTCCAAAACGCCTTTGATGGCAGCTGCAACTTTTTCCGTTGGTTGGAACACCTTCGCTTGCTCAGAGTC
ATTGAAAAACCACTGAACCTGGCTACTTTTTAATTAATTAATTTGACAACCTGCCTTCAGTCTTCAGTTAAT
AAGCACCGACATATGTTTGTAACAAGTTGATATGGATCATGTCATGAAGGCTAAATCCATCAGAGAGT
TTGATAAGCGATTCACTTCAGTCATGTTTGGATACCAAACAATTGATGATTATTATACTGATGCCAGTCC
GAGTCCTAGACTGAAGTCAGTAGGAATTCAGTATTGTGTCTAAATTTCTGTGGATGATGTTTTCTCACCC
AGTCATGCTATTCCAATAGAAACTGCTAAGCAAAATCCTAATGTTGCTTTGGTCTTACTTCTTATGGAG
GCCATATTGGTTTTCTGGAGGGAATCTGGCCAAGACAGTCCACTTACATGGATCGTGTCTTCAAGCAATT
TGTGCAAGCCATGGTTGAGCATGGACATGAACTCTCT

ACGCGTACGCGGCCGCTCGAGCAGAAACTCATCTCAGAAGAGGATCTGGCAGCAATGATATCCTGGATT
ACAAGGATGACGACGATAAGGTTTAA



[View online »](#)

Protein Sequence: >RC202633 protein sequence
Red=Cloning site Green=Tags(s)

MQCLAMDLRMLSRELSLYLEHQVRVGFVGGVGLSLILGFSVAYAFYYLSSIAKKPQLVTGGESFSRFLQ
 DHCPVVTETYYPTVWCWEGRGQTLRLPFIITSKPPVQYRNELIKTAGGQISLDWFDNDNSTCYMDASTRP
 TILLPLGTGTSKESYLHMIHLSEELGYRCVFNRRGVAGENLLTPRTYCCANTEDLETVIHHVHSLYP
 SAPFLAAGVSMGMLLLLNYLGKIGSKTPLMAAATFSVGWNTFACSELEKPLNWLFLNYLTTCLQSSVN
 KHRHMFVKQVMDHVMKAKSIREFDKRFITSMVFGYQTIIDYYTASPSPRLKSVGIPVLCNSVDDVYFSP
 SHAIPDIETAKQNPVALVLTSYGGHIGFLEGIWPRQSTYMDRVFKQFVQAMVEHGHELS

TRTRPLEQKLISEEDLAANDILDYKDDDDKV

Chromatograms: https://cdn.origene.com/chromatograms/mk6436_a06.zip

Restriction Sites: SgfI-MluI

Cloning Scheme:



* The last codon before the Stop codon of the ORF

ACCN: NM_138340

ORF Size: 1227 bp

OTI Disclaimer: The molecular sequence of this clone aligns with the gene accession number as a point of reference only. However, individual transcript sequences of the same gene can differ through naturally occurring variations (e.g. polymorphisms), each with its own valid existence. This clone is substantially in agreement with the reference, but a complete review of all prevailing variants is recommended prior to use. [More info](#)

OTI Annotation: This clone was engineered to express the complete ORF with an expression tag. Expression varies depending on the nature of the gene.

Components: The ORF clone is ion-exchange column purified and shipped in a 2D barcoded Matrix tube containing 10ug of transfection-ready, dried plasmid DNA (reconstitute with 100 ul of water).

Reconstitution Method:

1. Centrifuge at 5,000xg for 5min.
2. Carefully open the tube and add 100ul of sterile water to dissolve the DNA.
3. Close the tube and incubate for 10 minutes at room temperature.
4. Briefly vortex the tube and then do a quick spin (less than 5000xg) to concentrate the liquid at the bottom.
5. Store the suspended plasmid at -20°C. The DNA is stable for at least one year from date of shipping when stored at -20°C.

RefSeq: [NM_138340.1](#)

RefSeq Size: 2085 bp

RefSeq ORF: 1230 bp

Locus ID: 171586

UniProt ID: [Q8WU67](#)

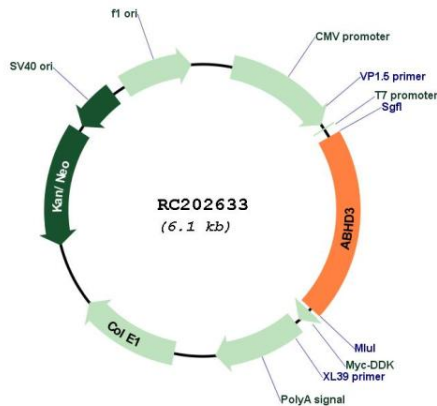
Cytogenetics: 18q11.2

Protein Families: Transmembrane

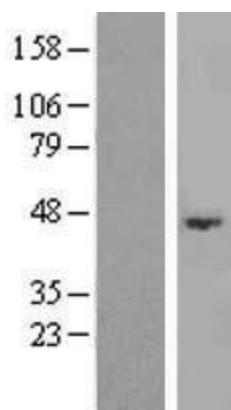
MW: 46 kDa

Gene Summary: This gene encodes a protein containing an alpha/beta hydrolase fold, which is a catalytic domain found in a very wide range of enzymes. The function of this protein has not been determined. [provided by RefSeq, Jul 2008]

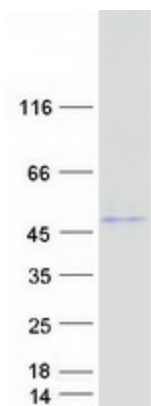
Product images:



Circular map for RC202633



Western blot validation of overexpression lysate (Cat# [LY408617]) using anti-DDK antibody (Cat# [TA50011-100]). Left: Cell lysates from untransfected HEK293T cells; Right: Cell lysates from HEK293T cells transfected with RC202633 using transfection reagent MegaTran 2.0 (Cat# [TT210002]).



Coomassie blue staining of purified ABHD3 protein (Cat# [TP302633]). The protein was produced from HEK293T cells transfected with ABHD3 cDNA clone (Cat# RC202633) using MegaTran 2.0 (Cat# [TT210002]).