

Product datasheet for RC202622

SUSD4 (NM_001037175) Human Tagged ORF Clone

Product data:

Product Type:	Expression Plasmids
Product Name:	SUSD4 (NM_001037175) Human Tagged ORF Clone
Tag:	Myc-DDK
Symbol:	SUSD4
Synonyms:	PRO222
Mammalian Cell Selection:	Neomycin
Vector:	pCMV6-Entry (PS100001)
E. coli Selection:	Kanamycin (25 ug/mL)
ORF Nucleotide Sequence:	>RC202622 ORF sequence Red=Cloning site Blue=ORF Green=Tags(s)

TTTTGTAATACGACTCACTATAGGGCGGCCGGAATTCGTCGACTGGATCCGGTACCGAGGAGATCTGCC
GCC**CGATCGCC**

ATGTATCATGGAATGAACCCGAGCAATGGAGATGGATTTCTAGAGCAGCAGCAGCAGCAGCAACCTC
AGTCCCCCAGAGACTCTTGCCGTGATCCTGTGGTTTCAGCTGGCGCTGTGCTTCGGCCCTGCACAGCT
CACGGGCGGGTTCGATGACCTTCAAGTGTGTGCTGACCCCGCATTCCCGAGAATGGCTTCAGGACCC
AGCGGAGGGGTTTCTTTGAAGGCTCTGTAGCCGATTTCACTGCCAAGACGGATTCAAGCTGAAGGGCG
CTACAAAGAGACTGTGTTTGAAGCATTTAATGGAACCCTAGGCTGGATCCCAAGTATAATTCCATCTG
TGTGCAAGAAGATTGCCGTATCCCTCAAATCGAAGATGCTGAGATTCATAACAAGACATATAGACATGGA
GAGAAGCTAATCATCACTTGTCATGAAGGATTCAGATCCGGTACCCCGACCTACACAATATGGTTTCAT
TATGTCGCGATGATGGAACGTGGAATAATCTGCCCATCTGTCAAGGCTGCCTGAGACCTCTAGCCTCTTC
TAATGGCTATGTAACATCTCTGAGCTCCAGACCTCCTTCCCGGTGGGACTGTGATCTCCTATCGCTGC
TTTCCCGATTTAACTTGATGGGTCTGCGTATCTTGAGTGCTTACAAAACCTTATCTGGTCTGCCAGCC
CACCCCGTGCCTTGCTCTGGAAGGAGGAAGACCTGAACATCTTTCCCTGTCCTTTATTTCCACACAT
CAGGTTGGCAGCTGCTGTGCTTTATTTTGGCCCTGTGTTAAAGTCCTCTCCACCCAGCACCTACCTGT
TCCTCAACTAGCACCACCACATCTGTTC

ACGCGTACGCGGCCGCTCGAGCAGAAACTCATCTCAGAAGAGGATCTGGCAGCAAATGATATCCTGGATT
ACAAGGATGACGACGATAAGGTTTAA



[View online »](#)

Protein Sequence: >RC202622 protein sequence
 Red=Cloning site Green=Tags(s)

MYHGMNPSNGDGFLEQQQQQQPQSPQRLLAVILWFQLALCFGPAQLTGGFDDLQVCADPGIPENGFRTPT
 SGGVFFEGSVARFHCQDGFKLKGGATKRLCLKHFNGTLGWIPSDNSICVQEDCRIPQIEDAEIHNKTYRHG
 EKLIITCHEGFKIRYPDLHNMVSLCRDDGTWNNLPICQGCLRPLASSNGYVNISELQTSFPVGTVISYRC
 FPGFKLDGSAYLECLQNLIWSSPPRCLALEGGRPEHLFPVLYPHIRLAAAVLYFCPVLKSSPTPAPTC
 SSTSTTSLF

TRTRPLEQKLISEEDLAANDILDYKDDDDKV

Chromatograms: https://cdn.origene.com/chromatograms/mk6405_g12.zip

Restriction Sites: SgfI-MluI

Cloning Scheme:



ACCN: NM_001037175

ORF Size: 870 bp

OTI Disclaimer: The molecular sequence of this clone aligns with the gene accession number as a point of reference only. However, individual transcript sequences of the same gene can differ through naturally occurring variations (e.g. polymorphisms), each with its own valid existence. This clone is substantially in agreement with the reference, but a complete review of all prevailing variants is recommended prior to use. [More info](#)

OTI Annotation: This clone was engineered to express the complete ORF with an expression tag. Expression varies depending on the nature of the gene.

Components: The ORF clone is ion-exchange column purified and shipped in a 2D barcoded Matrix tube containing 10ug of transfection-ready, dried plasmid DNA (reconstitute with 100 ul of water).

Reconstitution Method:

1. Centrifuge at 5,000xg for 5min.
2. Carefully open the tube and add 100ul of sterile water to dissolve the DNA.
3. Close the tube and incubate for 10 minutes at room temperature.
4. Briefly vortex the tube and then do a quick spin (less than 5000xg) to concentrate the liquid at the bottom.
5. Store the suspended plasmid at -20°C. The DNA is stable for at least one year from date of shipping when stored at -20°C.

Note: Plasmids are not sterile. For experiments where strict sterility is required, filtration with 0.22um filter is required.

RefSeq: [NM_001037175.3](#)

RefSeq Size: 1114 bp

RefSeq ORF: 873 bp

Locus ID: 55061

UniProt ID: [Q5VX71](#)

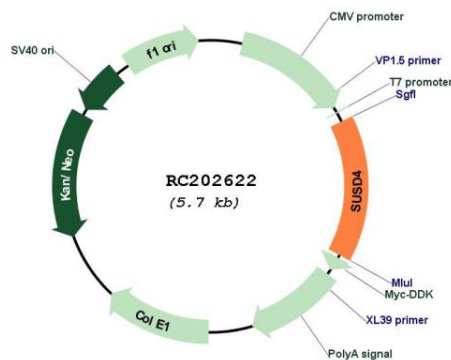
Cytogenetics: 1q41

Protein Families: Transmembrane

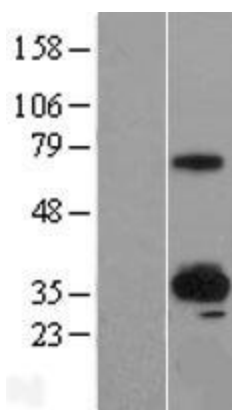
MW: 32.2 kDa

Gene Summary: Acts as complement inhibitor by disrupting the formation of the classical C3 convertase. Isoform 3 inhibits the classical complement pathway, while membrane-bound isoform 1 inhibits deposition of C3b via both the classical and alternative complement pathways. [UniProtKB/Swiss-Prot Function]

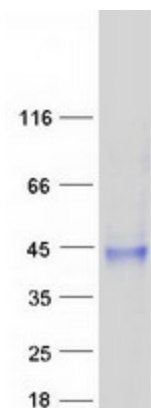
Product images:



Circular map for RC202622



Western blot validation of overexpression lysate (Cat# [LY421931]) using anti-DDK antibody (Cat# [TA50011-100]). Left: Cell lysates from untransfected HEK293T cells; Right: Cell lysates from HEK293T cells transfected with RC202622 using transfection reagent MegaTran 2.0 (Cat# [TT210002]).



Coomassie blue staining of purified SUSD4 protein (Cat# [TP302622]). The protein was produced from HEK293T cells transfected with SUSD4 cDNA clone (Cat# RC202622) using MegaTran 2.0 (Cat# [TT210002]).