

Product datasheet for RC202619

GJA5 (NM_005266) Human Tagged ORF Clone

Product data:

Product Type:	Expression Plasmids
Product Name:	GJA5 (NM_005266) Human Tagged ORF Clone
Tag:	Myc-DDK
Symbol:	GJA5
Synonyms:	ATFB11; CX40
Mammalian Cell Selection:	Neomycin
Vector:	pCMV6-Entry (PS100001)
E. coli Selection:	Kanamycin (25 ug/mL)
ORF Nucleotide Sequence:	>RC202619 ORF sequence Red=Cloning site Blue=ORF Green=Tags(s)

TTTTGTAATACGACTCACTATAGGGCGGCCGGAATTCGTCGACTGGATCCGGTACCGAGGAGATCTGCC
GCC**CGATCGCC**

ATGGGCGATTGGAGCTTCTGGGAAATTCCTGGAGGAAGTACACAAGCACTCGACCGTGGTAGGCAAGG
TCTGGCTCACTGTCTTTCATATTCGGTATGCTCGTGGGCACAGCTGCTGAGTCTTCTGGGGGA
TGAGCAGGCTGATTTCCGGTGTGATACGATTCAGCCTGGCTGCCAGAATGTCTGCTACGACCAGGCTTTC
CCCATCTCCACATTCGCTACTGGGTGCTGCAGATCATCTTCGCTCCACGCCCTCTCTGGTGTACATGG
GCCACGCCATGCACACTGTGCGCATGCAGGAGAAGCGCAAGCTACGGGAGGCCGAGAGGGCCAAAGAGGT
CCGGGGCTCTGGCTCTTACGAGTACCCGGTGGCAGAGAAGGCAGAACTGTCTGCTGGGAGGAAGGGAAT
GGAAGGATTGCCCTCCAGGGCACTCTGCTCAACACCTATGTGTGCAGCATCCTGATCCGCACCACCATGG
AGGTGGGCTTCATTGTGGGCCAGTACTTCATCTACGGAATCTTCTGACCACCCTGCATGTCTGCCGAG
GAGTCCCTGTCCCACCCGGTCAACTGTTACGTATCCCGGCCACAGAGAAGAATGTCTTTCATTGTCTTT
ATGCTGGCTGTGGCTGCACTGTCCCTCCTTAGCCTGGCTGAACTCTACCACCTGGGCTGGAAGAAGA
TCAGACAGCGATTTGTCAAACCGCGCAGCACATGGCTAAGTGCCAGCTTCTGGCCCTCTGTGGGCAT
AGTCCAGAGCTGCACACCACCCCGACTTTAATCAGTGCCTGGAGAATGGCCCTGGGGGAAAATTCCTC
AATCCCTTCAGCAATAATATGGCCTCCCAACAAAACACAGACAACCTGGTCACCGAGCAAGTACGAGGTC
AGGAGCAGACTCCTGGGAAGGTTTCATCCAGGTTGTTATGGCCAGAAGCCTGAGGTGCCCAATGGAGT
CTCACCAGGTCACCGCCTTCCCATGGCTATCATAGTGACAAGCGACGTCTTAGTAAAGGCCAGCAGCAAG
GCAAGGTCAGATGACCTATCAGTG

ACGCGTACGCGGCCGCTCGAGCAGAAAACATCTCAGAAGAGGATCTGGCAGCAATGATATCCTGGATT
ACAAGGATGACGACGATAAGGTTAA



[View online »](#)

Protein Sequence: >RC202619 protein sequence
Red=Cloning site Green=Tags(s)

MGDWSFLGNFLEEVEHKHSTVVGKVLTVLFI FRMLVLGTA AESSWGDEQADFRCDTIQPGCQNVCYDQAF
 PISHIRYWVLQIIFVSTPSLVYMGHAMHTVRMQEKRLREAERAKEVRGSGSYEPVAEKAELSCWEEGN
 GRIALQGTLLNTYVCSILIRTTMEVGFIVGQYFIYGIFL TTLHVCRRSPCPHPVNCYVSRPTEKNVFI
 MLAVAALLSLLSLAELYHLGWKKIRQRFVKPRQHMAKQQLSGPSVGI VQSCPTPPDFNQCLENGPGGKFF
 NPFSNNMASQQNTDNLVTEQVRGQEQTPEGGF IQVRYGQKPEVPNGVSPGHRLLPHGYHSDKRRLSKASSK
 ARSDDLVS

TRTRPLEQKLISEEDLAANDILDYKDDDDKV

Chromatograms: https://cdn.origene.com/chromatograms/mk6054_g10.zip

Restriction Sites: SgfI-MluI

Cloning Scheme:

Cloning sites used for ORF Shuttling:



* The last codon before the Stop codon of the ORF

ACCN: NM_005266

ORF Size: 1074 bp

OTI Disclaimer: The molecular sequence of this clone aligns with the gene accession number as a point of reference only. However, individual transcript sequences of the same gene can differ through naturally occurring variations (e.g. polymorphisms), each with its own valid existence. This clone is substantially in agreement with the reference, but a complete review of all prevailing variants is recommended prior to use. [More info](#)

OTI Annotation: This clone was engineered to express the complete ORF with an expression tag. Expression varies depending on the nature of the gene.

Components: The ORF clone is ion-exchange column purified and shipped in a 2D barcoded Matrix tube containing 10ug of transfection-ready, dried plasmid DNA (reconstitute with 100 ul of water).

Reconstitution Method:

1. Centrifuge at 5,000xg for 5min.
2. Carefully open the tube and add 100ul of sterile water to dissolve the DNA.
3. Close the tube and incubate for 10 minutes at room temperature.
4. Briefly vortex the tube and then do a quick spin (less than 5000xg) to concentrate the liquid at the bottom.
5. Store the suspended plasmid at -20°C. The DNA is stable for at least one year from date of shipping when stored at -20°C.

Note: Plasmids are not sterile. For experiments where strict sterility is required, filtration with 0.22um filter is required.

RefSeq: [NM_005266.6](#)

RefSeq Size: 3201 bp

RefSeq ORF: 1077 bp

Locus ID: 2702

UniProt ID: [P36382](#)

Cytogenetics: 1q21.2

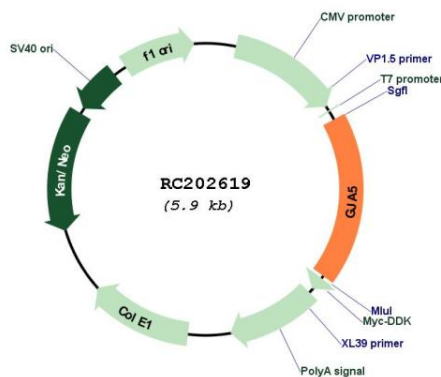
Domains: CNX

Protein Families: Transmembrane

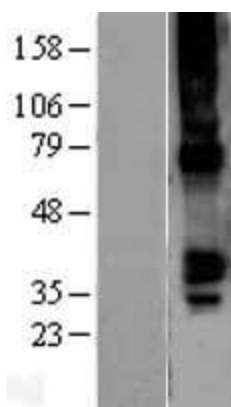
MW: 40.4 kDa

Gene Summary: This gene is a member of the connexin gene family. The encoded protein is a component of gap junctions, which are composed of arrays of intercellular channels that provide a route for the diffusion of low molecular weight materials from cell to cell. Mutations in this gene may be associated with atrial fibrillation. Alternatively spliced transcript variants encoding the same isoform have been described. [provided by RefSeq, Jul 2008]

Product images:



Circular map for RC202619



Western blot validation of overexpression lysate (Cat# [LY401619]) using anti-DDK antibody (Cat# [TA50011-100]). Left: Cell lysates from untransfected HEK293T cells; Right: Cell lysates from HEK293T cells transfected with RC202619 using transfection reagent MegaTran 2.0 (Cat# [TT210002]).