

Product datasheet for RC202607

Malectin (MLEC) (NM_014730) Human Tagged ORF Clone

Product data:

Product Type:	Expression Plasmids
Product Name:	Malectin (MLEC) (NM_014730) Human Tagged ORF Clone
Tag:	Myc-DDK
Symbol:	Malectin
Synonyms:	KIAA0152
Mammalian Cell Selection:	Neomycin
Vector:	pCMV6-Entry (PS100001)
E. coli Selection:	Kanamycin (25 ug/mL)
ORF Nucleotide Sequence:	>RC202607 ORF sequence Red=Cloning site Blue=ORF Green=Tags(s)

TTTTGTAATACGACTCACTATAGGGCGCCGGGAATTCGTCGACTGGATCCGGTACCGAGGAGATCTGCC
GCC**CGGATCGCC**

ATGCTGGGAGCCTGGGCGTTGAGGGAACCGCTGTGGCGCTCCTGCGACTGCTGCTGCTGCTGCCGC
CGGCGATCCGGGACCCGGGCTCGGCGTGGCCGGCGTGGCCGGCGCGGGGGCCGGGCTGCCGAGAG
CGTCATTTGGGCGGTCAACGCGGTGGAGAGGCGCATGTGGACGTGCACGGGATCCACTTCCGAAGGAC
CCTTTGGAAGGCCGGTGGGCCGAGCCTCAGACTATGGCATGAACTGCCAATCCTGCGTTCCAACCTG
AGGACCAGATCCTGTATCAAACCTGAGCGGTACAATGAGGAGACCTTTGGCTACGAAGTGCCATCAAAGA
GGAGGGGACTACGTGCTGGTCTTGAAATTTGCAGAGGTCTACTTTGCACAGTCCAGCAAAGGTATTT
GATGTACGATTGAATGGCCACGTCGTGGTGAAGGACTTGGATATCTTTGATCGTGTGGGATAGCACAG
CTCACGATGAAATTATACCTATGAGCATCAGAAAGGGGAAGCTGAGTGTCCAGGGGAGGTGTCCACCTT
CACAGGAAACTCTACATTGAGTTTGTCAAGGGTACTATGACAATCCCAAGGTCTGTGCACTCTACATC
ATGGCTGGGACAGTGGATGATGTACAAAGCTTCAGCCTCATCCGGGATTGGAGAAGAAAGAAGAGGAAG
AAGAAGAAGAAGATATGATGAAGGTCTAATCTCAAAAACAGACCAATAAGAACCAGGTCAGTCAGG
CCCCCGCACCCCAACCCTATGCCTCGGACAACAGCAGCCTCATGTTTCCATCCTGGTGGCCTTCGGA
GTCTTCATTCCAACCCTTCTGCCTCTGCCGTTG

ACGCGTACGCGGCGCTCGAGCAGAAACTCATCTCAGAAGAGGATCTGGCAGCAAATGATATCCTGGATT
ACAAGGATGACGACGATAAGGTTTAA



[View online »](#)

Protein Sequence: >RC202607 protein sequence
Red=Cloning site Green=Tags(s)

MLGAWAVEGTAVALLRLLLLLPPAIRGPLGVAGVAGAAGLPESEVIWVAVNAGGEAHVDVHGIHFRKD
 PLEGRVGRASDYGMKLPILRSNPEDQILYQTERYNEETFGYEVPIKEEGDYVLVLKFAEVYFAQSQQKVF
 DVRLNGHVVVKDLDFDRVGHSTAHDEIIPMSIRKGGKLSVQGEVSTFTGKLYIEFVKGYDNPVKCALYI
 MAGTVDDVPKLPHPGLEKKEEEEEEEYDEGSNLKKQTNKNRVQSGPRTPNPYASDNSSLMFPILVAFG
 VFIPTLFLCLRL

TRTRPLEQKLISEEDLAANDILDYKDDDDKV

Chromatograms: https://cdn.origene.com/chromatograms/mk6831_a01.zip

Restriction Sites: SgfI-MluI

Cloning Scheme:



ACCN: NM_014730

ORF Size: 876 bp

OTI Disclaimer: The molecular sequence of this clone aligns with the gene accession number as a point of reference only. However, individual transcript sequences of the same gene can differ through naturally occurring variations (e.g. polymorphisms), each with its own valid existence. This clone is substantially in agreement with the reference, but a complete review of all prevailing variants is recommended prior to use. [More info](#)

OTI Annotation: This clone was engineered to express the complete ORF with an expression tag. Expression varies depending on the nature of the gene.

Components: The ORF clone is ion-exchange column purified and shipped in a 2D barcoded Matrix tube containing 10ug of transfection-ready, dried plasmid DNA (reconstitute with 100 ul of water).

Reconstitution Method:

1. Centrifuge at 5,000xg for 5min.
2. Carefully open the tube and add 100ul of sterile water to dissolve the DNA.
3. Close the tube and incubate for 10 minutes at room temperature.
4. Briefly vortex the tube and then do a quick spin (less than 5000xg) to concentrate the liquid at the bottom.
5. Store the suspended plasmid at -20°C. The DNA is stable for at least one year from date of shipping when stored at -20°C.

RefSeq: [NM_014730.4](#)

RefSeq Size: 6367 bp

RefSeq ORF: 879 bp

Locus ID: 9761

UniProt ID: [Q14165](#)

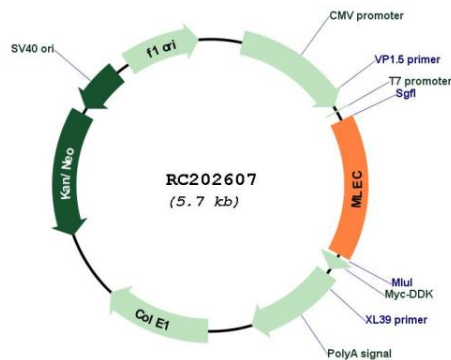
Cytogenetics: 12q24.31

Protein Families: Transmembrane

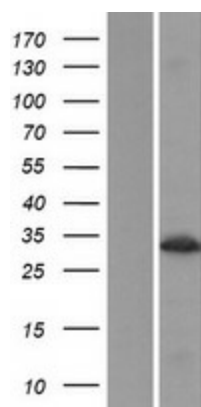
MW: 32.2 kDa

Gene Summary: This gene encodes the carbohydrate-binding protein malectin which is a Type I membrane-anchored endoplasmic reticulum protein. This protein has an affinity for Glc2Man9GlcNAc2 (G2M9) N-glycans and is involved in regulating glycosylation in the endoplasmic reticulum. This protein has also been shown to interact with ribophorin I and may be involved in the directing the degradation of misfolded proteins. Alternate splicing results in multiple transcript variants. [provided by RefSeq, Jan 2015]

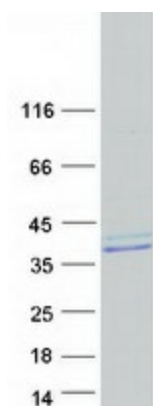
Product images:



Circular map for RC202607



Western blot validation of overexpression lysate (Cat# [LY415102]) using anti-DDK antibody (Cat# [TA50011-100]). Left: Cell lysates from un-transfected HEK293T cells; Right: Cell lysates from HEK293T cells transfected with RC202607 using transfection reagent MegaTran 2.0 (Cat# [TT210002]).



Coomassie blue staining of purified MLEC protein (Cat# [TP302607]). The protein was produced from HEK293T cells transfected with MLEC cDNA clone (Cat# RC202607) using MegaTran 2.0 (Cat# [TT210002]).