

Product datasheet for RC202605

EIF1AD (NM_032325) Human Tagged ORF Clone

Product data:

Product Type: Expression Plasmids
Product Name: EIF1AD (NM_032325) Human Tagged ORF Clone
Tag: Myc-DDK
Symbol: EIF1AD
Synonyms: haponin; OBELIX
Mammalian Cell Selection: Neomycin
Vector: pCMV6-Entry (PS100001)
E. coli Selection: Kanamycin (25 ug/mL)
ORF Nucleotide Sequence: >RC202605 ORF sequence
 Red=Cloning site Blue=ORF Green=Tags(s)

TTTTGTAATACGACTCACTATAGGGCGCCGGGAATTCGTCGACTGGATCCGGTACCGAGGAGATCTGCC
 GCC**CGATCGCC**

ATGCTCAGGCCACCAAGAGGAAGCATGTGGTGAAGGAGGTGCTAGGGGAGCACATAGTGCCTCCAACC
 AGCAGCAGATTGTCAGGGTACTCAGGACCCAGGGAACAATCTGCATGAGGTGGAGACAGCCCAAGGGCA
 GCGCTTCTGGTGGTGGTGCCTCCAAATACCGCAAGAACATCTGGATCAAGAGAGGGGACTTTCTCATT
 GTTGACCCATTGAAGAGGGAGAAAAGGTGAAGGCTGAAATCTCGTTTGTGCTCTGCAAGGACCACGTGC
 GCTCTCTGCAGAAGGAGGGTTTTGGCCTGAGGCTTCTCTGAAGTGGCTGAGAAACACAACAACAGGAA
 CAGACAACTCAACCAGAACTCCAGCTGAGCCACAGTTATCAGGAGAGGAGTCCAGCTCAGAAGATGAT
 TCTGACCTGTTTGTAAACACAAACCGCAGACAGTATCATGAGAGTGAAGAGGAGAGTGAAGAGGAGGAGG
 CAGCC

ACGCGTACGCGGCCGCTCGAGCAGAACTCATCTCAGAAGAGGATCTGGCAGCAAATGATATCCTGGATT
 ACAAGGATGACGACGATAAGGTTTAA

Protein Sequence: >RC202605 protein sequence
 Red=Cloning site Green=Tags(s)

MSQATKRKHVVKEVLGEHIVPSNQQQIVRVLRTPGNNLHEVETAQGGQRFVSMPSKYRKNIIWIKRGDFLI
 VDPIEEGEKVKAEIFVLCKDHVRSLQKEGFWPEAFSEVAEKHNNRNRQTQPELPAEPQLSGEESSEDD
 SDLFVNTNRRQYHESEEESEEEAA

TRTRPLEQKLISEEDLAANDILDYKDDDDKV

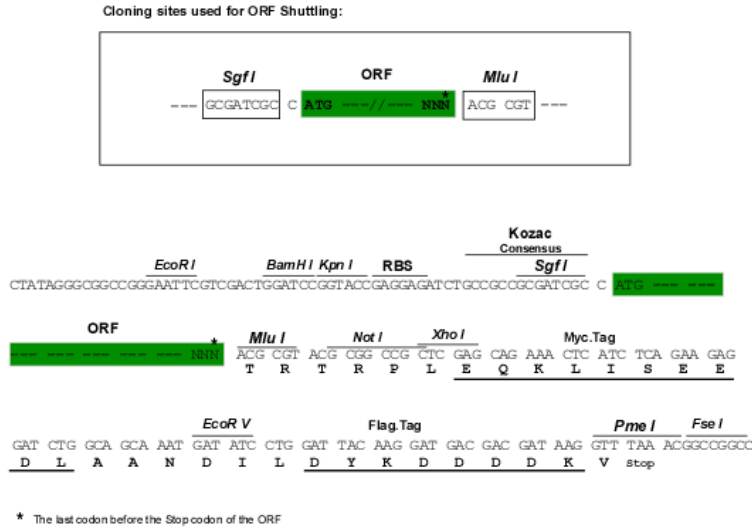
Chromatograms: https://cdn.origene.com/chromatograms/mk6405_e07.zip



[View online »](#)

Restriction Sites: SgfI-MluI

Cloning Scheme:



ACCN: NM_032325

ORF Size: 495 bp

OTI Disclaimer: The molecular sequence of this clone aligns with the gene accession number as a point of reference only. However, individual transcript sequences of the same gene can differ through naturally occurring variations (e.g. polymorphisms), each with its own valid existence. This clone is substantially in agreement with the reference, but a complete review of all prevailing variants is recommended prior to use. [More info](#)

OTI Annotation: This clone was engineered to express the complete ORF with an expression tag. Expression varies depending on the nature of the gene.

Components: The ORF clone is ion-exchange column purified and shipped in a 2D barcoded Matrix tube containing 10ug of transfection-ready, dried plasmid DNA (reconstitute with 100 ul of water).

Reconstitution Method:

1. Centrifuge at 5,000xg for 5min.
2. Carefully open the tube and add 100ul of sterile water to dissolve the DNA.
3. Close the tube and incubate for 10 minutes at room temperature.
4. Briefly vortex the tube and then do a quick spin (less than 5000xg) to concentrate the liquid at the bottom.
5. Store the suspended plasmid at -20°C. The DNA is stable for at least one year from date of shipping when stored at -20°C.

RefSeq: [NM_032325.1](#)

RefSeq Size: 2896 bp

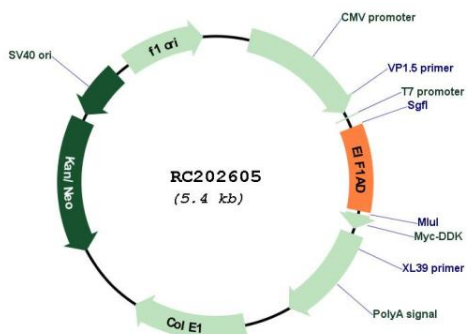
RefSeq ORF: 498 bp

Locus ID: 84285

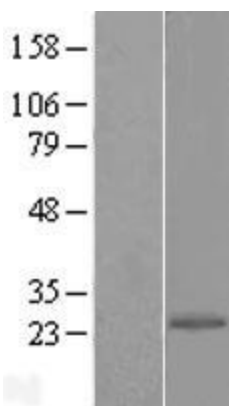
UniProt ID: [Q8N9N8](#)

Cytogenetics: 11q13.1
Domains: eIF-1a
MW: 19.1 kDa
Gene Summary: Plays a role into cellular response to oxidative stress. Decreases cell proliferation. [UniProtKB/Swiss-Prot Function]

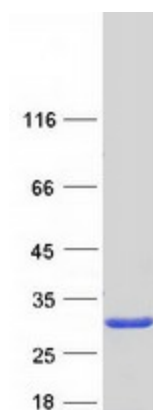
Product images:



Circular map for RC202605



Western blot validation of overexpression lysate (Cat# [LY410201]) using anti-DDK antibody (Cat# [TA50011-100]). Left: Cell lysates from untransfected HEK293T cells; Right: Cell lysates from HEK293T cells transfected with RC202605 using transfection reagent MegaTran 2.0 (Cat# [TT210002]).



Coomassie blue staining of purified EIF1AD protein (Cat# [TP302605]). The protein was produced from HEK293T cells transfected with EIF1AD cDNA clone (Cat# RC202605) using MegaTran 2.0 (Cat# [TT210002]).