

Product datasheet for RC202601

METTL7A (NM_014033) Human Tagged ORF Clone

Product data:

Product Type:	Expression Plasmids
Product Name:	METTL7A (NM_014033) Human Tagged ORF Clone
Tag:	Myc-DDK
Symbol:	METTL7A
Synonyms:	AAM-B; AAMB
Vector:	pCMV6-Entry (PS100001)
E. coli Selection:	Kanamycin (25 ug/mL)
Cell Selection:	Neomycin
ORF Nucleotide Sequence:	>RC202601 ORF sequence Red=Cloning site Blue=ORF Green=Tags(s)

TTTTGTAATACGACTCACTATAGGGCGCCGGAATTCGTCGACTGGATCCGGTACCGAGGAGATCTGCC
GCC**CGATCGCC**

ATGGAGCTTACCATCTTTATCCTGAGACTGGCCATTTACATCCTGACATTTCCCTTGTACCTGCTGAACT
TTCTGGGCTTGTGGAGCTGGATATGCAAAAATGGTCCCCTACTTCTTGGTGGAGTTCACTGTGATATA
CAACGAACAGATGGCAAGCAAGAAGCGGGAGCTTTCAGTAACCTGCAGGAGTTTGCGGGCCCTCCGGG
AAACTCTCCCTGCTGGAAGTGGGCTGTGGCACGGGGCCAACTTCAAGTTCTACCCACCTGGGTGCAGGG
TGACCTGTATTGACCCCAACCCCACTTTGAGAAGTTTTGATCAAGAGCATTGCAGAGAACCGACACCT
GCAGTTTGAGCGCTTTGTGGTAGCTGCCGGGAGAAATGCACCAGGTGGCTGATGGCTCTGTGGATGTG
GTGGTCTGCACCCTGGTCTGTGCTCTGTGAAGAACCAGGAGCGGATTCTCCGCGAGGTGCAGAGTGC
TGAGACCGGGAGGGCTTTCTATTTTCATGGAGCATGTGGCAGCTGAGTGTTCGACTTGAATTACTTCTG
GCAACAAGTCCTGGATCCTGCCTGGCACCTTCTGTTTGTGGGTGCAACCTGACCAGAGAGAGCTGGAAG
GCCCTGGAGCGGGCCAGCTTCTAAGCTGAAGCTGCAGCACATCCAGGCCCACTGTCTGGGAGTTGG
TGCGCCCTCATATCTATGGATATGCTGTGAAA

ACGCGTACGCGGCCGCTCGAGCAGAAACTCATCTCAGAAGAGGATCTGGCAGCAAATGATATCCTGGATT
ACAAGGATGACGACGATAAGGTTTAA



[View online »](#)

Protein Sequence: >RC202601 protein sequence
 Red=Cloning site Green=Tags(s)

MELTIFILRLAIYILTFPLYLLNFLGLWSWICKKWFYFLVRFVTVIYNEQMASKKRELF SNLQEFAGPSG
 KLSLLEVGCGTGANFKFYPPGCRVTCIDPNPNFEKFLIKSIAENRHLQFERFVVAAGENMHQVADGSVDV
 VVCTLVLC SVKNQERILREVCRLRPGGAFYFMEHVAAECSTWNYFWQQVLDPAWHLLFDGCNLTRESWK
 ALERASF SKLKLQHIQAPLSWELVRPHIYGAVK

TRTRPLEQKLISEEDLAANDILDYKDDDDKV

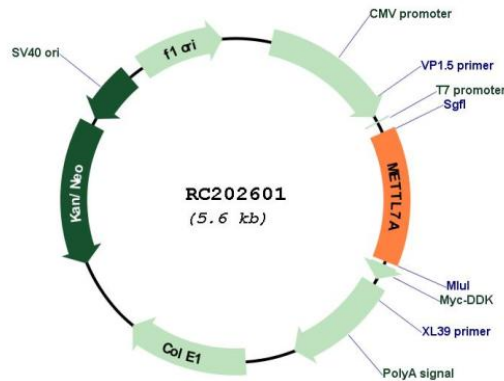
Chromatograms: https://cdn.origene.com/chromatograms/mk6391_d01.zip

Restriction Sites: SgfI-MluI

Cloning Scheme:



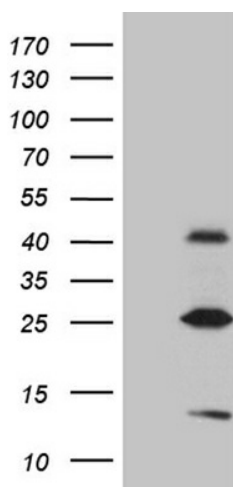
Plasmid Map:



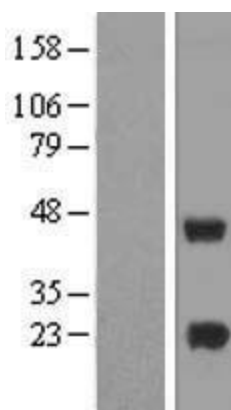
ACCN: NM_014033

ORF Size:	732 bp
OTI Disclaimer:	The molecular sequence of this clone aligns with the gene accession number as a point of reference only. However, individual transcript sequences of the same gene can differ through naturally occurring variations (e.g. polymorphisms), each with its own valid existence. This clone is substantially in agreement with the reference, but a complete review of all prevailing variants is recommended prior to use. More info
OTI Annotation:	This clone was engineered to express the complete ORF with an expression tag. Expression varies depending on the nature of the gene.
RefSeq:	NM_014033.4
RefSeq Size:	3390 bp
RefSeq ORF:	735 bp
Locus ID:	25840
UniProt ID:	Q9H8H3 , A0A024R118
Protein Families:	Druggable Genome, Transmembrane
MW:	28.3 kDa
Gene Summary:	Probable methyltransferase.[UniProtKB/Swiss-Prot Function]

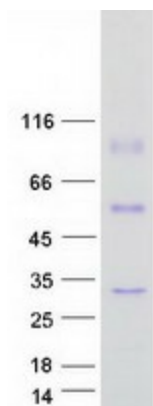
Product images:



HEK293T cells were transfected with the pCMV6-ENTRY control (Cat# [PS100001], Left lane) or pCMV6-ENTRY METTL7A (Cat# RC202601, Right lane) cDNA for 48 hrs and lysed. Equivalent amounts of cell lysates (5 ug per lane) were separated by SDS-PAGE and immunoblotted with anti-METTL7A (Cat# [TA809878])(1:2000). Positive lysates [LY415471] (100ug) and [LC415471] (20ug) can be purchased separately from OriGene.



Western blot validation of overexpression lysate (Cat# [LY415471]) using anti-DDK antibody (Cat# [TA50011-100]). Left: Cell lysates from untransfected HEK293T cells; Right: Cell lysates from HEK293T cells transfected with RC202601 using transfection reagent MegaTran 2.0 (Cat# [TT210002]).



Coomassie blue staining of purified METTL7A protein (Cat# [TP302601]). The protein was produced from HEK293T cells transfected with METTL7A cDNA clone (Cat# RC202601) using MegaTran 2.0 (Cat# [TT210002]).