

Product datasheet for RC202600

TIMP3 (NM_000362) Human Tagged ORF Clone

Product data:

Product Type:	Expression Plasmids
Product Name:	TIMP3 (NM_000362) Human Tagged ORF Clone
Tag:	Myc-DDK
Symbol:	TIMP3
Synonyms:	HSMRK222; K222; K222TA2; SFD
Mammalian Cell Selection:	Neomycin
Vector:	pCMV6-Entry (PS100001)
E. coli Selection:	Kanamycin (25 ug/mL)
ORF Nucleotide Sequence:	>RC202600 ORF sequence Red=Cloning site Blue=ORF Green=Tags(s)

TTTTGTAATACGACTCACTATAGGGCGCCGGGAATTCGTCGACTGGATCCGGTACCGAGGAGATCTGCC
GCC**CGATCGCC**

ATGACCCCTTGGCTCGGGCTCATCGTGCTCCTGGGCAGCTGGAGCCTGGGGGACTGGGGCGCCGAGGCGT
GCACATGCTCGCCAGCCACCCAGGACGCCTTCTGCAACTCCGACATCGTGATCCGGGCAAGGTGGT
GGGAAGAAGCTGGTAAAGGAGGGGCCCTTCGGCAGCTGGTCTACACCATCAAGCAGATGAAGATGTAC
CGAGGCTTACCAAGATGCCCCATGTGCAGTACATCCATACGGAAGCTTCCGAGAGTCTCTGTGGCCTTA
AGCTGGAGGTCAACAAGTACCAGTACCTGCTGACAGGTGCGTCTATGATGGCAAGATGTACACGGGCT
GTGCAACTTCGTGGAGAGGTGGGACCAGCTCACCTCTCCAGCGCAAGGGGCTGAACTATCGGTATCAC
CTGGGTTGTAAGTCAAGATCAAGTCTGCTACTACCTGCCTTGTGTTGTGACTTCCAAGAACGAGTGTC
TCTGGACCGACATGCTCTCCAATTTTCGGTTACCCTGGCTACCAGTCCAAACACTACGCCTGCATCCGGCA
GAAGGGCGGCTACTGCAGCTGGTACCGAGGATGGGCCCGGATAAAAGCATCATCAATGCCACAGAC
CCC

ACGCGTACGCGGCGCTCGAGCAGAACTCATCTCAGAAGAGGATCTGGCAGCAATGATATCCTGGATT
ACAAGGATGACGACGATAAGGTTTAA



[View online »](#)

Protein Sequence: >RC202600 protein sequence
 Red=Cloning site Green=Tags(s)

MTPWLGLIVLLGSWSLGDWGAEACTCSPSHQDAFCNSDIVIRAKVVGKLVKEGPFGLVYTIKQMKMY
 RGFTKMPHVQYIHTASESLCGLKLEVNKYQYLLTGRVYDGKMYTGLCNFVERWDQLTLSQRKGLNYRYH
 LGCNCKIKSCYYLPCFVT SKNECLWTDMLSNFGYPGYQSKHYACIRQGGYCSWYRGWAPPDKSIINATD
 P

TRTRPLEQKLISEEDLAANDILDYKDDDDKV

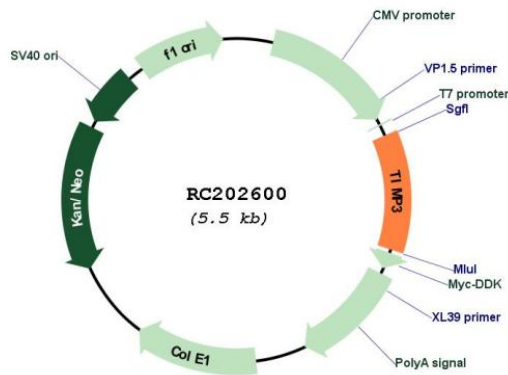
Chromatograms: https://cdn.origene.com/chromatograms/mk6053_c12.zip

Restriction Sites: SgfI-MluI

Cloning Scheme:



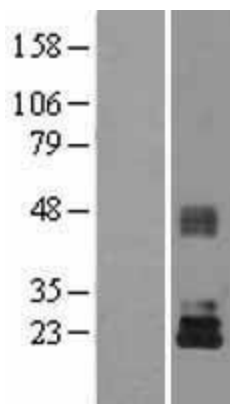
Plasmid Map:



ACCN: NM_000362

ORF Size: 633 bp

OTI Disclaimer:	Due to the inherent nature of this plasmid, standard methods to replicate additional amounts of DNA in E. coli are highly likely to result in mutations and/or rearrangements. Therefore, OriGene does not guarantee the capability to replicate this plasmid DNA. Additional amounts of DNA can be purchased from OriGene with batch-specific, full-sequence verification at a reduced cost. Please contact our customer care team at custsupport@origene.com or by calling 301.340.3188 option 3 for pricing and delivery.
	The molecular sequence of this clone aligns with the gene accession number as a point of reference only. However, individual transcript sequences of the same gene can differ through naturally occurring variations (e.g. polymorphisms), each with its own valid existence. This clone is substantially in agreement with the reference, but a complete review of all prevailing variants is recommended prior to use. More info
OTI Annotation:	This clone was engineered to express the complete ORF with an expression tag. Expression varies depending on the nature of the gene.
Components:	The ORF clone is ion-exchange column purified and shipped in a 2D barcoded Matrix tube containing 10ug of transfection-ready, dried plasmid DNA (reconstitute with 100 ul of water).
Reconstitution Method:	<ol style="list-style-type: none"> 1. Centrifuge at 5,000xg for 5min. 2. Carefully open the tube and add 100ul of sterile water to dissolve the DNA. 3. Close the tube and incubate for 10 minutes at room temperature. 4. Briefly vortex the tube and then do a quick spin (less than 5000xg) to concentrate the liquid at the bottom. 5. Store the suspended plasmid at -20°C. The DNA is stable for at least one year from date of shipping when stored at -20°C.
RefSeq:	NM_000362.5
RefSeq Size:	5496 bp
RefSeq ORF:	636 bp
Locus ID:	7078
UniProt ID:	P35625
Cytogenetics:	22q12.3
Domains:	NTR
Protein Families:	Druggable Genome, Secreted Protein
MW:	24.1 kDa
Gene Summary:	This gene belongs to the TIMP gene family. The proteins encoded by this gene family are inhibitors of the matrix metalloproteinases, a group of peptidases involved in degradation of the extracellular matrix (ECM). Expression of this gene is induced in response to mitogenic stimulation and this netrin domain-containing protein is localized to the ECM. Mutations in this gene have been associated with the autosomal dominant disorder Sorsby's fundus dystrophy. [provided by RefSeq, Jul 2008]

Product images:

Western blot validation of overexpression lysate (Cat# [LY400129]) using anti-DDK antibody (Cat# [TA50011-100]). Left: Cell lysates from untransfected HEK293T cells; Right: Cell lysates from HEK293T cells transfected with RC202600 using transfection reagent MegaTran 2.0 (Cat# [TT210002]).