

## Product datasheet for RC202598

### TM2D2 (NM\_031940) Human Tagged ORF Clone

#### Product data:

**Product Type:** Expression Plasmids  
**Product Name:** TM2D2 (NM\_031940) Human Tagged ORF Clone  
**Tag:** Myc-DDK  
**Symbol:** TM2D2  
**Synonyms:** BLP1  
**Vector:** pCMV6-Entry (PS100001)  
**E. coli Selection:** Kanamycin (25 ug/mL)  
**Cell Selection:** Neomycin  
**ORF Nucleotide Sequence:** >RC202598 ORF sequence  
Red=Cloning site Blue=ORF Green=Tags(s)

TTTTGTAATACGACTCACTATAGGGCGGCCGGAATTCGTCGACTGGATCCGGTACCGAGGAGATCTGCC  
GCC**CGATCGCC**

ATGAAGAAATGTCTTTTGCCGTTTTGATTACGTGCATGCAAACAGCGATTTGCAAAGACCGTATGATGA  
TGATCATGATCTTACTGGTGAATTACAGACCTGATGAATTTATAGAATGTGAAGACCCAGTGATCATGT  
TGGAAATGCAACTGCATCCAGGAAGTTGTTATGGTTGTCTCAAGTTCGGCGGTACGGCCTACAGCGAC  
GTGGAACACACTTCAGTCCAGTGCCATGCCTTAGATGGAATTGAGTGTGCCAGTCCTAGGACCTTTCTAC  
GAGAAAATAAACCTTGTATAAAGTATACCGGACACTACTTCATAACCACTTTACTCTACTCCTTCTCTCT  
GGGATGTTTTGGTGTGGATCGATTCTGTTTGGGACACACTGGCACTGCAGTAGGGAAGCTGTTGACGCTT  
GGAGGACTTGGGATTTGGTGGTTGTGGACCTATTTTGCTAATTACTGGAGGGCTGATGCCAAGTGATG  
GCAGCAACTGGTGCATGTTTAC

**ACGCGT**ACGCGGCGCTCGAGCAGAAACTCATCTCAGAAGAGGATCTGGCAGCAAATGATATCCTGGATT  
ACAAGGATGACGACGATAAGGTTTAA

**Protein Sequence:** >RC202598 protein sequence  
Red=Cloning site Green=Tags(s)

MKKCLLPVLITCMQTAICKDRMMMIMILLVNYRPDEFIECEDPVDHVG NATASQELGYGCLKFGGQAYS D  
VEHTSVQCHALDGI ECASPRFTFLRENKPCIKYTGHYFITLLYSFFLGCFGVDRFCLGHTGTAVGKLLTL  
GGLGIWWFVDLILLITGGLMPSDGSNWCTVY

**TR**TRPLEQKLISEEDLAANDILDYKDDDDKV

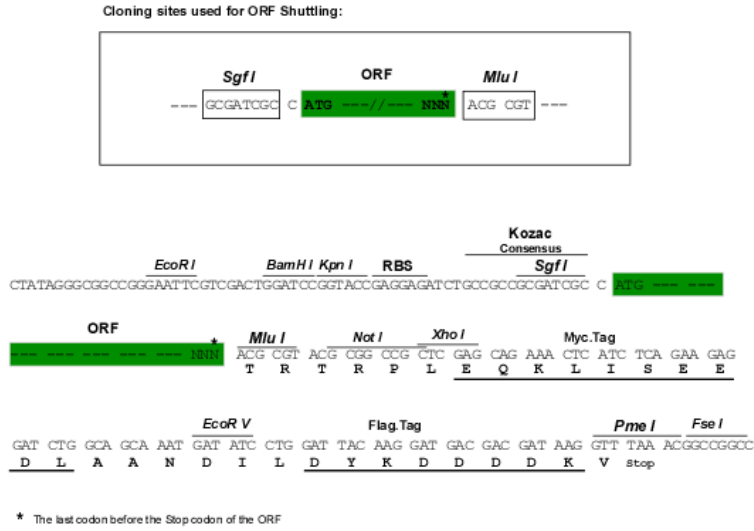
**Chromatograms:** [https://cdn.origene.com/chromatograms/mk6085\\_d02.zip](https://cdn.origene.com/chromatograms/mk6085_d02.zip)



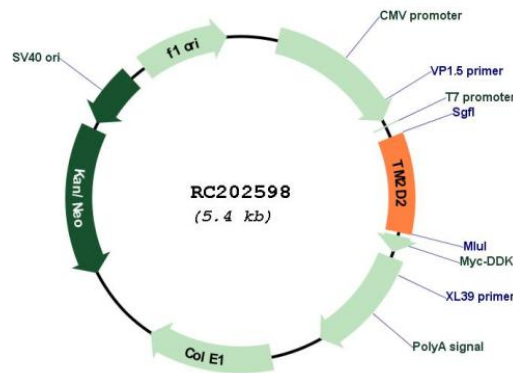
[View online »](#)

Restriction Sites: SgfI-MluI

Cloning Scheme:



Plasmid Map:



ACCN: NM\_031940

ORF Size: 513 bp

OTI Disclaimer: The molecular sequence of this clone aligns with the gene accession number as a point of reference only. However, individual transcript sequences of the same gene can differ through naturally occurring variations (e.g. polymorphisms), each with its own valid existence. This clone is substantially in agreement with the reference, but a complete review of all prevailing variants is recommended prior to use. [More info](#)

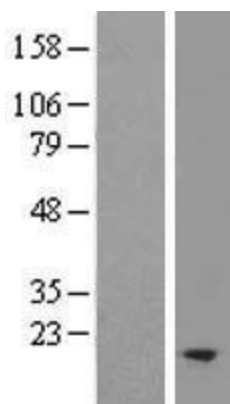
OTI Annotation: This clone was engineered to express the complete ORF with an expression tag. Expression varies depending on the nature of the gene.

RefSeq: [NM\\_031940.4](#)

RefSeq Size:	3641 bp
RefSeq ORF:	516 bp
Locus ID:	83877
UniProt ID:	<a href="#">Q9BX73</a>
Domains:	TM2
Protein Families:	Druggable Genome, Transmembrane
MW:	19 kDa

**Gene Summary:** The protein encoded by this gene contains a structural module related to that of the seven transmembrane domain G protein-coupled receptor superfamily. This protein has sequence and structural similarities to the beta-amyloid binding protein (BBP), but, unlike BBP, it does not regulate a response to beta-amyloid peptide. This protein may have regulatory roles in cell death or proliferation signal cascades. This gene has multiple alternatively spliced transcript variants which encode two different isoforms. [provided by RefSeq, Jul 2008]

### Product images:



Western blot validation of overexpression lysate (Cat# [LY410424]) using anti-DDK antibody (Cat# [TA50011-100]). Left: Cell lysates from untransfected HEK293T cells; Right: Cell lysates from HEK293T cells transfected with RC202598 using transfection reagent MegaTran 2.0 (Cat# [TT210002]).