

Product datasheet for RC202586

LIMD2 (NM_030576) Human Tagged ORF Clone

Product data:

Product Type: Expression Plasmids
Product Name: LIMD2 (NM_030576) Human Tagged ORF Clone
Tag: Myc-DDK
Symbol: LIMD2
Mammalian Cell Selection: Neomycin
Vector: pCMV6-Entry (PS100001)
E. coli Selection: Kanamycin (25 ug/mL)
ORF Nucleotide Sequence: >RC202586 ORF sequence
 Red=Cloning site Blue=ORF Green=Tags(s)

TTTTGTAATACGACTCACTATAGGGCGGCCGGAATTCGTCGACTGGATCCGGTACCGAGGAGATCTGCCGCCGCGATCGCC

ATGTTCCAGGCTGCAGGAGCCGCCAGGCCACCCCTCTCATGACGCCAAAGGCGCGGCAGCAGCACGG
 TGCAGCGCTCCAAGTCTTCAGCCTGCGGGCCAGGTGAAGGAGACCTGCGCCGCTGCCAGAAGACCGT
 GTACCCCATGGAGCGCTGGTGGCCGACAAGCTCATTTCCACAACTCTTGCTTCTGCTGCAAGCACTGT
 CACACCAAGCTCAGCCTGGCAGCTACGCCGCGCTGCACGGGGAGTTCTACTGCAAACCCCACTTCCAGC
 AGCTGTTTAAGAGCAAAGGCAACTACGACGAGGGGTTTGCCGCAAGCAGCACAAGGAGCTCTGGGCCCA
 CAAGGAGGTGGACCCCGCACCAAGACGGCC

ACGCGTACGCGGCCGCTCGAGCAGAACTCATCTCAGAAGAGGATCTGGCAGCAAATGATATCCTGGATT
 ACAAGGATGACGACGATAAGGTTTAA

Protein Sequence: >RC202586 protein sequence
 Red=Cloning site Green=Tags(s)

MFQAAGAAQATPSHDAKGGSSSTVQRSKSFSLRQVKETCAACQKTVYPMERLVADKLIFHNSCFCKKHC
 HTKLSLGSYAALHGEFYCKPHFQQLFKSKGNYDEGFGRKQHKELWAHKEVDPGKTAK

TRTRPLEQKLISEEDLAANDILDYKDDDDKV

Chromatograms: https://cdn.origene.com/chromatograms/mk6391_g12.zip

Restriction Sites: SgfI-MluI



[View online »](#)

Cloning Scheme:


ACCN: NM_030576

ORF Size: 381 bp

OTI Disclaimer: The molecular sequence of this clone aligns with the gene accession number as a point of reference only. However, individual transcript sequences of the same gene can differ through naturally occurring variations (e.g. polymorphisms), each with its own valid existence. This clone is substantially in agreement with the reference, but a complete review of all prevailing variants is recommended prior to use. [More info](#)

OTI Annotation: This clone was engineered to express the complete ORF with an expression tag. Expression varies depending on the nature of the gene.

Components: The ORF clone is ion-exchange column purified and shipped in a 2D barcoded Matrix tube containing 10ug of transfection-ready, dried plasmid DNA (reconstitute with 100 ul of water).

Reconstitution Method:

1. Centrifuge at 5,000xg for 5min.
2. Carefully open the tube and add 100ul of sterile water to dissolve the DNA.
3. Close the tube and incubate for 10 minutes at room temperature.
4. Briefly vortex the tube and then do a quick spin (less than 5000xg) to concentrate the liquid at the bottom.
5. Store the suspended plasmid at -20°C. The DNA is stable for at least one year from date of shipping when stored at -20°C.

RefSeq: [NM_030576.4](#)

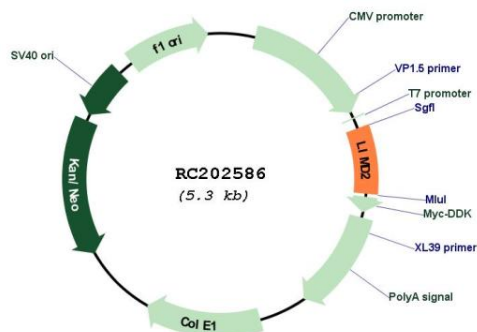
RefSeq Size: 3232 bp

RefSeq ORF: 384 bp

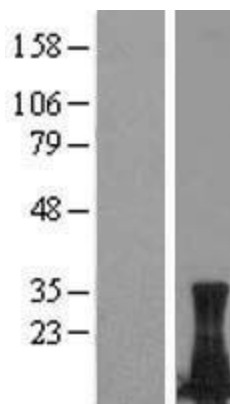
Locus ID: 80774

UniProt ID: [Q9BT23](#)
Cytogenetics: 17q23.3
MW: 14.1 kDa
Gene Summary: Acts as an activator of the protein-kinase ILK, thereby regulating cell motility (PubMed:24590809).[UniProtKB/Swiss-Prot Function]

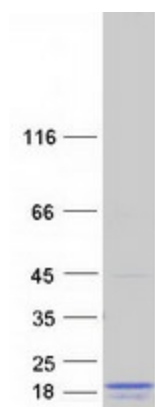
Product images:



Circular map for RC202586



Western blot validation of overexpression lysate (Cat# [LY410780]) using anti-DDK antibody (Cat# [TA50011-100]). Left: Cell lysates from untransfected HEK293T cells; Right: Cell lysates from HEK293T cells transfected with RC202586 using transfection reagent MegaTran 2.0 (Cat# [TT210002]).



Coomassie blue staining of purified LIMD2 protein (Cat# [TP302586]). The protein was produced from HEK293T cells transfected with LIMD2 cDNA clone (Cat# RC202586) using MegaTran 2.0 (Cat# [TT210002]).