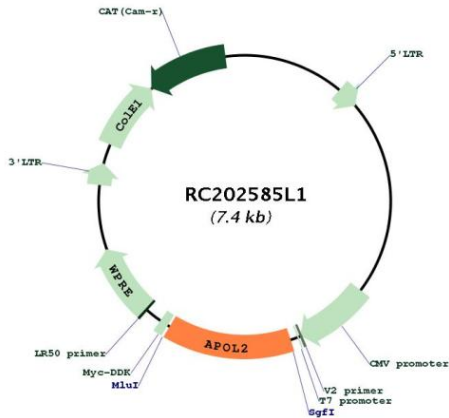


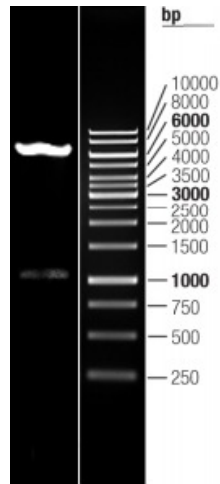


|                               |                                                                                                                                                                                                                                                                                                                                                                                                                                                                                                                   |
|-------------------------------|-------------------------------------------------------------------------------------------------------------------------------------------------------------------------------------------------------------------------------------------------------------------------------------------------------------------------------------------------------------------------------------------------------------------------------------------------------------------------------------------------------------------|
| <b>OTI Disclaimer:</b>        | The molecular sequence of this clone aligns with the gene accession number as a point of reference only. However, individual transcript sequences of the same gene can differ through naturally occurring variations (e.g. polymorphisms), each with its own valid existence. This clone is substantially in agreement with the reference, but a complete review of all prevailing variants is recommended prior to use. <a href="#">More info</a>                                                                |
| <b>OTI Annotation:</b>        | This clone was engineered to express the complete ORF with an expression tag. Expression varies depending on the nature of the gene.                                                                                                                                                                                                                                                                                                                                                                              |
| <b>Components:</b>            | The ORF clone is ion-exchange column purified and shipped in a 2D barcoded Matrix tube containing 10ug of transfection-ready, dried plasmid DNA (reconstitute with 100 ul of water).                                                                                                                                                                                                                                                                                                                              |
| <b>Reconstitution Method:</b> | <ol style="list-style-type: none"><li>1. Centrifuge at 5,000xg for 5min.</li><li>2. Carefully open the tube and add 100ul of sterile water to dissolve the DNA.</li><li>3. Close the tube and incubate for 10 minutes at room temperature.</li><li>4. Briefly vortex the tube and then do a quick spin (less than 5000xg) to concentrate the liquid at the bottom.</li><li>5. Store the suspended plasmid at -20°C. The DNA is stable for at least one year from date of shipping when stored at -20°C.</li></ol> |
| <b>RefSeq:</b>                | <a href="#">NM_030882.2</a>                                                                                                                                                                                                                                                                                                                                                                                                                                                                                       |
| <b>RefSeq Size:</b>           | 2545 bp                                                                                                                                                                                                                                                                                                                                                                                                                                                                                                           |
| <b>RefSeq ORF:</b>            | 1014 bp                                                                                                                                                                                                                                                                                                                                                                                                                                                                                                           |
| <b>Locus ID:</b>              | 23780                                                                                                                                                                                                                                                                                                                                                                                                                                                                                                             |
| <b>UniProt ID:</b>            | <a href="#">Q9BQE5</a>                                                                                                                                                                                                                                                                                                                                                                                                                                                                                            |
| <b>Cytogenetics:</b>          | 22q12.3                                                                                                                                                                                                                                                                                                                                                                                                                                                                                                           |
| <b>Protein Families:</b>      | Druggable Genome, Transmembrane                                                                                                                                                                                                                                                                                                                                                                                                                                                                                   |
| <b>MW:</b>                    | 37.1 kDa                                                                                                                                                                                                                                                                                                                                                                                                                                                                                                          |
| <b>Gene Summary:</b>          | This gene is a member of the apolipoprotein L gene family. The encoded protein is found in the cytoplasm, where it may affect the movement of lipids or allow the binding of lipids to organelles. Two transcript variants encoding the same protein have been found for this gene. [provided by RefSeq, Jul 2008]                                                                                                                                                                                                |

Product images:



Circular map for RC202585L1



Double digestion of RC202585L1 using SgfI and MluI