

## Product datasheet for RC202585

### Apolipoprotein L 2 (APOL2) (NM\_030882) Human Tagged ORF Clone

#### Product data:

Product Type:	Expression Plasmids
Product Name:	Apolipoprotein L 2 (APOL2) (NM_030882) Human Tagged ORF Clone
Tag:	Myc-DDK
Symbol:	APOL2
Synonyms:	APOL-II; APOL3
Vector:	pCMV6-Entry (PS100001)
E. coli Selection:	Kanamycin (25 ug/mL)
Cell Selection:	Neomycin
ORF Nucleotide Sequence:	>RC202585 ORF sequence Red=Cloning site Blue=ORF Green=Tags(s)

TTTTGTAATACGACTCACTATAGGGCGCCGGAATTCGTCGACTGGATCCGGTACCGAGGAGATCTGCC  
GCC**CGGATCGCC**

ATGAACCCAGAGAGCAGTATCTTTATTGAGGATTACCTTAAGTATTTCCAGGACCAAGTGAGCAGAGAGA  
ATCTGCTACAACCTGCTGACTGATGATGAAGCCTGGAATGGATTCGTGGCTGCTGCTGAACGCCCCAGGGA  
TGAGGCAGATGAGCTCCGTAAGCTCTGAACAAGCTTGAAGTCACATGGTCATGAAGGACAAAAACCGC  
CAGGATAAAGACCAGCAGCACAGGCAGTGGTTTTTGAAGAGTTTCTCGGTTGAAAAGGGAGCTTGAGG  
ATCACATAAGGAAGCTCCGTGCCCTTGACAGAGGAGTTGAGCAGGTCCACAGAGGCCACCACATTGCCAA  
TGTGGTGTCCAACCTCTGTTGGCACTACCTCTGGCATCCTGACCCTCCTCGGCTGGGTCTGGCACCCCTC  
ACAGAAGGAATCAGTTTTGTGCTCTTGGCACTGGCATGGGTCTGGGAGCAGCAGCTGCTGTGGCTGGGA  
TTACCTGCAGTGTGGTAGAACTAGTAAACAAATTCGCGGCACGAGCCCAAGCCCGCAACTGGACCAAAAG  
CGGCACCAATGTAGCAAAGGTGATGAAGGAGTTTGTGGGTGGGAACACACCCAATGTTCTTACCTTAGTT  
GACAATTGGTACCAAGTCACACAAGGGATTGGGAGGAACATCCGTGCCATCAGACGAGCCAGAGCCAACC  
CTCAGTTAGGAGCGTATGCCCAACCCCGCATGTCATTGGGCGAATCTCAGCTGAAGCGGTGAACAGGT  
TGAGAGGGTTGTTGAAGGCCCGCCAGGCAATGAGCAGAGGAACCATGATCGTGGGTGCAGCCACTGGA  
GGCATCTTGCTTCTGCTGGATGTGGTCAGCCTTGATATGAGTCAAAGCACTTGCTTGAGGGGGCAAAGT  
CAGAGTCAGTGAGGAGCTGAAGAAGCGGGCTCAGGAGCTGGAGGGGAAGCTCAACTTTCTACCAAGAT  
CCATGAGATGCTGCAGCCAGGCCAAGACCAA

**ACGGT**ACGCGGCCGCTCGAGCAGAACTCATCTCAGAAGAGGATCTGGCAGCAATGATATCCTGGATT  
ACAAGGATGACGACGATAAGGTTTAA



[View online »](#)

Protein Sequence: >RC202585 protein sequence  
 Red=Cloning site Green=Tags(s)

MNPESSIFIEDYLKYFQDQVSRENLLQLLTDDEAWNGFVAAAELPRDEDELRKALNKLASHMVMKDKNR  
 HDKDQQHRQWFLKEFPRLKRELEDHIRKLRALAEVEVQVHRGTTIANVVSNSVGTTSGLTLLGLGLAPF  
 TEGISFVLLDTGMGLGAAAAVAGITCSVVELVNKLARAQARNLDQSGTNVAKVMKEFVGGNTPNVLTLV  
 DNWYQVTQIGRNIIRRARANPQLGAYAPPHVIGRISAEGGEQVRRVVEGPAQAMSRGTMIVGAATG  
 GILLLLDVVSLAYESKHLLLEGAKSESAEELKKRAQELEGKLNFLTKIHEMLQPGQDQ

TRTRPLEQKLISEEDLAANDILDYKDDDDKV

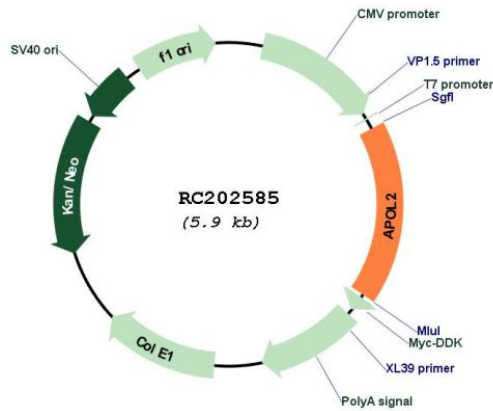
Chromatograms: [https://cdn.origene.com/chromatograms/mk6151\\_a08.zip](https://cdn.origene.com/chromatograms/mk6151_a08.zip)

Restriction Sites: SgfI-MluI

Cloning Scheme:



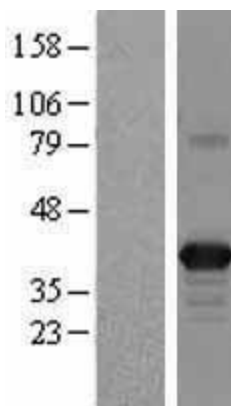
Plasmid Map:



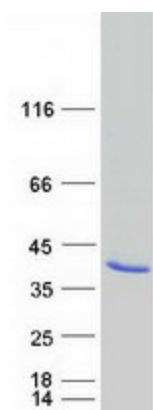
ACCN: NM\_030882

ORF Size:	1011 bp
OTI Disclaimer:	The molecular sequence of this clone aligns with the gene accession number as a point of reference only. However, individual transcript sequences of the same gene can differ through naturally occurring variations (e.g. polymorphisms), each with its own valid existence. This clone is substantially in agreement with the reference, but a complete review of all prevailing variants is recommended prior to use. <a href="#">More info</a>
OTI Annotation:	This clone was engineered to express the complete ORF with an expression tag. Expression varies depending on the nature of the gene.
RefSeq:	<a href="#">NM_030882.4</a>
RefSeq Size:	2545 bp
RefSeq ORF:	1014 bp
Locus ID:	23780
UniProt ID:	<a href="#">Q9BQE5</a> , <a href="#">A0A024R1M8</a>
Protein Families:	Druggable Genome, Transmembrane
MW:	37.1 kDa
Gene Summary:	This gene is a member of the apolipoprotein L gene family. The encoded protein is found in the cytoplasm, where it may affect the movement of lipids or allow the binding of lipids to organelles. Two transcript variants encoding the same protein have been found for this gene. [provided by RefSeq, Jul 2008]

### Product images:



Western blot validation of overexpression lysate (Cat# [LY403087]) using anti-DDK antibody (Cat# [TA50011-100]). Left: Cell lysates from untransfected HEK293T cells; Right: Cell lysates from HEK293T cells transfected with RC202585 using transfection reagent MegaTran 2.0 (Cat# [TT210002]).



Coomassie blue staining of purified APOL2 protein (Cat# [TP302585]). The protein was produced from HEK293T cells transfected with APOL2 cDNA clone (Cat# RC202585) using MegaTran 2.0 (Cat# [TT210002]).