

Product datasheet for **RC202579**

CEP95 (NM_138363) Human Tagged ORF Clone

Product data:

Product Type:	Expression Plasmids
Product Name:	CEP95 (NM_138363) Human Tagged ORF Clone
Tag:	Myc-DDK
Symbol:	CEP95
Synonyms:	CCDC45
Mammalian Cell Selection:	Neomycin
Vector:	pCMV6-Entry (PS100001)
E. coli Selection:	Kanamycin (25 ug/mL)



[View online »](#)

**ORF Nucleotide
Sequence:**

>RC202579 ORF sequence
 Red=Cloning site Blue=ORF Green=Tags(s)

TTTTGTAATACGACTCACTATAGGGCGGCCGGAATTCGTCGACTGGATCCGGTACCGAGGAGATCTGCC
 GCC**CGGATCGCC**

ATGGCAGGCTCGGATGCTGAGTGGGTAACCAATTGCCAATAACCTTCTTTTAAAGTGCATATACATCTGA
 GAATACATGAACCTCAAGACTGTGATGCTAATGTTTTATTGCTCTTTATCAGTCTATTTTGGGAGAAAA
 GGTACCAGACCTCATAGTTATTCCTAGGAGTCAAGAAGATGATGCACACAATGTACAAGCAGTAATTGAT
 TCACTGGCCTTGGACTACTTGCAGGTGAGTGTCTCACATAACAGGAGAAAAATAGTAAAGGAGATA
 AAGAATCTATTAAGAATCTCCTGAAAAATTTGATGGTTTGTGGAGTATCTTACAGAACGCATCAGTGA
 AACATCTCATGAGAAAAGTGAACCTGAACAGTATTTTAAAGAATCTGATCGAGGAGAACGTTTGGAAAG
 CCAGAAAGTACTAAAGAATCTAAATCATCATGGAAAAGAGTTTCTTTGGGAGGTGCTCCTTGTCTTCTG
 AGATGTTGGGCCCTCTGGGATGGAGATGAAGCAGAATCCACTGGTAAATCATTAGACTTGGAGACAC
 AGCACACACCTTTTCTTAAGAAGTAATGGTGCTCAATGCCTAATGAAATGCTGTCAAAAAAGCCTTA
 GCCTCACCAAGTTCTAAATCACATGAAGATATGTTGTACCCTCCTAGTGTCTTGTCCAAGAGTAGGCAT
 CCTTTGTTGAAGACACGGAAACCTTTCTGTGAGTGGGATTCCAATGCTAGGAAGCTAGGGGAGCCTAT
 CCGAGCAGCTATTCCTTTACATCCACCCTACCACCCTCAGAGCCTCGAGCACCTGCCCATAGGAAAA
 GAATACTTGCAATCAAGTCACTGCTCCCCAGCCGTAATTTCTACTGGAGAGCATAACGGAATTTTCTGGGG
 ATCTAGATGATGGACTTTTCTTAATTTCCAAGTTGCCTAAAGGCAGCAATGGGAAGTATATCCAGCTCA
 GGTCCAAGGGCCTAGGACAAGGAAGCCTCCCAAAGGAAAAAGAAATGAAAACAGAGCTACAGCCTCATCC
 TGCAATTCACCTTTCCCCAGAGGCCAAGAAAGAGATTAACAGAACAAGAATTACATGATGTATCAGAAA
 AACTCTCTCAGCGCTTTCTGAACTAGATTGGATGTTAAAAAGTGTCTGGGTGATCGGATTAAGAAAA
 GACTGACCATAAAGAAGAAAAACTGGAAATGAGGAGGTAGAGGATGGAAGTGAAGGAGACACTGTCTCAG
 CACAGTGTGGCATCGTGGAGTATGGGCCAAAGAAGTCAAGGCCAGGACTTTCCATGCGTAGAAAGCCAC
 CCTACAGATCCCATTGCTCTCTCCATCTCCAGTTAACAAACACAAACAGTTCCACTTGGAGAGAAAAAG
 GCAGCGCAAGCCAAGAGAAACAGATGTCCGCCAATTCGAAGCACAGGCGTTTACTGAAGCATTGAAAGG
 GAACTAAGAAGACATAAAGTTCAAGAGAATATTGGACCTCTAAGAATACATGAGAAGGAGGAGGAAACAG
 AAAAAATACAGAGGAGAAGCTGTTTCGTAAGGAAGTCCAGAATGTAGTCAGCCCTGGAAGATTTACTC
 TAGAAAAACCACAACGCAGAGTCTAAGAGGTGGCCTCCCAAAGCCAAATAAAGCAGTTCCAATGAAAGTA
 AGTGAACACAGTCTCCTGCCCTTATGCTGGAGCAGTTTCCGTTTCTTTATGTTTCTGGCCAACACTAA
 GCAAAATGTGAAACAGCAAAATTCACAGGTTGAACAGCTTAAGAAAGAAGCATGTAGAGAAAATCGATC
 AAAGAAGAAACTCCAAGATGAAATAGAAGAAGCCCTAAGAAGGCATGACCTCCTTACTACCTTGTCAAG
 AAAGAATATGAACATAACAAGAGACTGCAAGACTTCAAGGACTGCATTTCGTAGGCAAAGGTTGACCCAAT
 CAAAGATAAAAGAAAAATCGACAGCAAAATCGTTCGTGCTCGAAAAATATTATGATGATTATAGAGTTCA
 GTGTGCAAAAATGATGAGAATGAGGACCCGGAAGAAATGATATTTAAGAAACTGTTTGAAGAAGGTTTA
 AACATTCAAAAGCAAAGATTACGAGACCTAAGAACTATGCCAAAGAAAAGCGAGATGAACAAAGGAGAC
 GCCACCAGGATGAACTGGACTCCATGGAGAACTACTATAAGGACCAGTTTTCATTGCTGGCAGAAGCCAT
 ATCACAGGAACATCAAGAACTTAAAGCCAGAGAGAAATCTCAGGCCAGACATTACATAAGGTGAAGAGG
 GAGCTGAGATCTAAGATGGAGAAGGAAATTCAGCAGCTGCAGGACATGATAACACAGAATGATGATGATG
 TTTTCTCCGGAACTGGAAGCTGAGCGCTTCAGATCTCGGCTTCAGCTGGCTTCTTTTCAGTACAGTAA
 AAGTCCCTCCCTA

ACGCGTACGCGGCCGCTCGAGCAGAACTCATCTCAGAAGAGGATCTGGCAGCAATGATATCCTGGATT
 ACAAGGATGACGACGATAAGGTTTAA

Protein Sequence: >RC202579 protein sequence
Red=Cloning site Green=Tags(s)

MAGSDAEWVTIANLLFKCHIHLRIHELQDCDANVFIALYQSILGEKVPDLIVIPRSQEDDAHNVQAVID
SLALDYLQVSLSHITGENIVKGDKESIKNLLIFDGLLEYLTERISETSHEKSETEQYFKESDRGERLEE
PESTKESKSSWKRVSFGRCSLSSEMLGPSWDGDEAESTGEIIRLGDTAHTFSLRSNGAQCPNEMLSKKAL
ASPSSKSHEDMLYPPSVLSKSRTSFVEDTETLSVSGIPNARKLGEPIRAAIPLHPPYHPSEPRAPCPIGK
EYLHSSHCSPAVNSTGEHTEFSGDLDDGLFLISKLPKGSKWEVYPAQVQGPRTKPPKGRNENRATASS
CNSPFPQRPKRRLTEQELHDVSEKLSQRLSELDWMLKSALGDRIKEKTDHKEENTGNEEVEDGTEETLSQ
HSDGIVEYGPKSRPGLSMRRKPPYRSHSLSPSPVNKHKQFHLEKRRQRKPRETDVRQFQAQAFTEAFER
ELRRHKVQENIGPLRIHEKEEETEKIYRGEAVRKGTPESQPWKIYSRKTQTQSLRGGLPKPNKAVPMKV
SEHSLPLMLEQFPFLYVSGPTLSKMWKQQAQVEQLKKEACRENRSKKKLQDEIEEALRRHDLTTLVK
KEYEHNKRLQDFKDCIRRQRLTQSKIKENRQQIVRARKYDDYRVQLCAKMMRMRTREEMIFKCLFEGL
NIQKQRLRDLRNYAKEKRDEQRRRHQDELDSMENYYKDQFSLLAEASQEHQELKAREKSQAQTLHKVVR
ELRSKMEKEIQQLQDMITQNDVVFFRELEAERFRSRLQLASFQYSKSPSL

TRTRPLEQKLISEEDLAANDILDYKDDDDKV

Chromatograms: https://cdn.origene.com/chromatograms/mk6690_c05.zip

Restriction Sites: Sgfl-Mlul

Cloning Scheme:



ACCN: NM_138363

ORF Size: 2463 bp

OTI Disclaimer: The molecular sequence of this clone aligns with the gene accession number as a point of reference only. However, individual transcript sequences of the same gene can differ through naturally occurring variations (e.g. polymorphisms), each with its own valid existence. This clone is substantially in agreement with the reference, but a complete review of all prevailing variants is recommended prior to use. [More info](#)

OTI Annotation: This clone was engineered to express the complete ORF with an expression tag. Expression varies depending on the nature of the gene.

Components: The ORF clone is ion-exchange column purified and shipped in a 2D barcoded Matrix tube containing 10ug of transfection-ready, dried plasmid DNA (reconstitute with 100 ul of water).

Reconstitution Method:

1. Centrifuge at 5,000xg for 5min.
2. Carefully open the tube and add 100ul of sterile water to dissolve the DNA.
3. Close the tube and incubate for 10 minutes at room temperature.
4. Briefly vortex the tube and then do a quick spin (less than 5000xg) to concentrate the liquid at the bottom.
5. Store the suspended plasmid at -20°C. The DNA is stable for at least one year from date of shipping when stored at -20°C.

Note: Plasmids are not sterile. For experiments where strict sterility is required, filtration with 0.22um filter is required.

RefSeq: [NM_138363.3](#)

RefSeq Size: 2705 bp

RefSeq ORF: 2466 bp

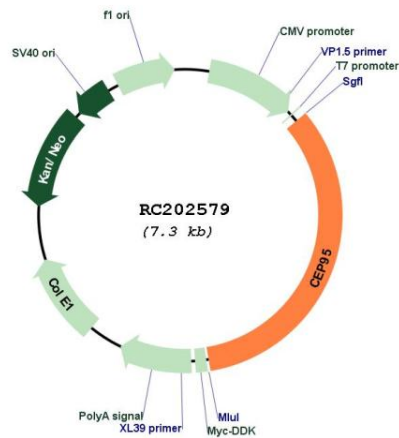
Locus ID: 90799

UniProt ID: [Q96GE4](#)

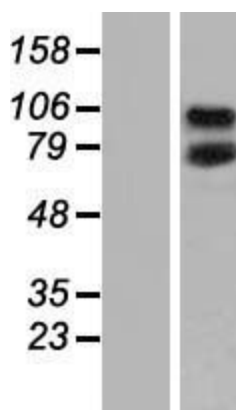
Cytogenetics: 17q23.3

MW: 95.3 kDa

Product images:



Circular map for RC202579



Western blot validation of overexpression lysate (Cat# [LY408634]) using anti-DDK antibody (Cat# [TA50011-100]). Left: Cell lysates from untransfected HEK293T cells; Right: Cell lysates from HEK293T cells transfected with RC202579 using transfection reagent MegaTran 2.0 (Cat# [TT210002]).