

Product datasheet for **RC202577**

SPX (NM_030572) Human Tagged ORF Clone

Product data:

Product Type: Expression Plasmids

Tag: Myc-DDK

Symbol: SPX

Synonyms: C12orf39

Mammalian Cell Selection: Neomycin

Vector: pCMV6-Entry (PS100001)

E. coli Selection: Kanamycin (25 ug/mL)

ORF Nucleotide Sequence: >RC202577 ORF sequence
Red=Cloning site Blue=ORF Green=Tags(s)

TTTTGTAATACGACTCACTATAGGGCGGCCGGAATTCGTCGACTGGATCCGGTACCGAGGAGATCTGCC
GCC**CGATCGCC**

ATGAAGGGACTCAGAAGTCTGGCAGCAACAACCTTGGCTCTTTCTGGTGTGTTGTTTCTGGGAACT
CCAGCTGCGCTCCGCAGAGACTGTTGGAGAGAAGGAAGTGGACTCCTCAAGCTATGCTCTACCTGAAAGG
GGCACAGGGTCGCCGCTTCATCTCCGACCAGAGCCGGAGAAAGGACCTCTCCGACCGGCCACTGCCGGAA
AGACGAAGCCCAATCCCAACTACTAATATTCGGAGGCAGCAACCATCTTACTGGCGTCCCTTCAGA
AATCACCAGAAGATGAAGAAAAAACTTTGATCAAACCAGATTCCTGGAAGACAGTCTGCTTAAGTGG

ACGCGTACGCGGCCGCTCGAGCAGAACTCATCTCAGAAGAGGATCTGGCAGCAATGATATCCTGGATT
ACAAGGATGACGACGATAAGGTTTAA

Protein Sequence: >RC202577 protein sequence
Red=Cloning site Green=Tags(s)

MKGLRSLAATTLALFLVFVLGNSSCAPQRLLEARNWTPQAMLYLKAQGRRFISDQSRRKDLSDRPLPE
RRSPNPQLLTIPEAATILLASLQKSPDEEKNFDQTRFLEDSSLNW

TRTRPLE**QKLISEEDLA**NDILDYKDDDDKV

Chromatograms: https://cdn.origene.com/chromatograms/mk6143_e03.zip

Restriction Sites: SgfI-MluI



[View online »](#)

Cloning Scheme:



ACCN: NM_030572

ORF Size: 348 bp

OTI Disclaimer: The molecular sequence of this clone aligns with the gene accession number as a point of reference only. However, individual transcript sequences of the same gene can differ through naturally occurring variations (e.g. polymorphisms), each with its own valid existence. This clone is substantially in agreement with the reference, but a complete review of all prevailing variants is recommended prior to use. [More info](#)

OTI Annotation: This clone was engineered to express the complete ORF with an expression tag. Expression varies depending on the nature of the gene.

Components: The ORF clone is ion-exchange column purified and shipped in a 2D barcoded Matrix tube containing 10ug of transfection-ready, dried plasmid DNA (reconstitute with 100 ul of water).

Reconstitution Method:

1. Centrifuge at 5,000xg for 5min.
2. Carefully open the tube and add 100ul of sterile water to dissolve the DNA.
3. Close the tube and incubate for 10 minutes at room temperature.
4. Briefly vortex the tube and then do a quick spin (less than 5000xg) to concentrate the liquid at the bottom.
5. Store the suspended plasmid at -20°C. The DNA is stable for at least one year from date of shipping when stored at -20°C.

Note: Plasmids are not sterile. For experiments where strict sterility is required, filtration with 0.22um filter is required.

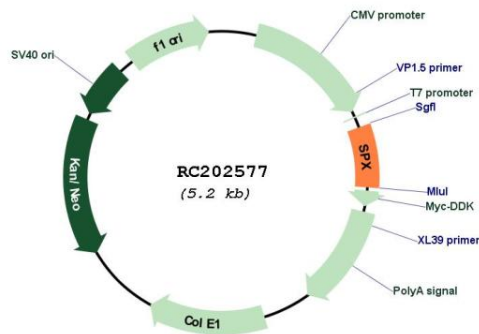
RefSeq: [NM_030572.4](#)

RefSeq Size: 638 bp

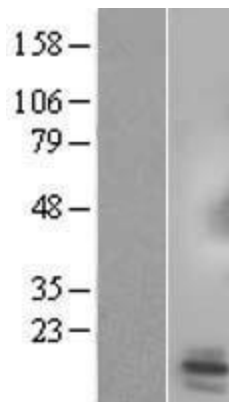
RefSeq ORF:	351 bp
Locus ID:	80763
UniProt ID:	Q9BT56
Cytogenetics:	12p12.1
Protein Families:	Secreted Protein, Transmembrane
MW:	13.3 kDa

Gene Summary: The protein encoded by this gene is a hormone involved in modulation of cardiovascular and renal function. It has also been shown in rats to cause weight loss. Several transcript variants have been found for this gene. [provided by RefSeq, Feb 2016]

Product images:



Circular map for RC202577



Western blot validation of overexpression lysate (Cat# [LY403064]) using anti-DDK antibody (Cat# [TA50011-100]). Left: Cell lysates from untransfected HEK293T cells; Right: Cell lysates from HEK293T cells transfected with RC202577 using transfection reagent MegaTran 2.0 (Cat# [TT210002]).