

Product datasheet for **RC202570**

PITX1 (NM_002653) Human Tagged ORF Clone

Product data:

Product Type: Expression Plasmids
Product Name: PITX1 (NM_002653) Human Tagged ORF Clone
Tag: Myc-DDK
Symbol: PITX1
Synonyms: BFT; CCF; LBNBG; POTX; PTX1
Mammalian Cell Selection: Neomycin
Vector: pCMV6-Entry (PS100001)
E. coli Selection: Kanamycin (25 ug/mL)
ORF Nucleotide Sequence: >RC202570 ORF sequence
Red=Cloning site Blue=ORF Green=Tags(s)

TTTTGTAATACGACTCACTATAGGGCGCCGGGAATTCGTCGACTGGATCCGGTACCGAGGAGATCTGCC
GCC**CGGATCGCC**

ATGGACGCCTTCAAGGGGGGCATGAGCCTGGAGCGGCTGCCGGAGGGGCTCCGGCCGCCGCCGCCAC
CCCATGACATGGGGCCCGCTTCCACCTGGCCCGCCCGGACCCCGGAGCCGCTCGAGAATCCGC
CAGCGAGTCGTCTGACACGGAGCTGCCAGAGAAGGAGCGCGGGGAACCAAGGGGCCGAGGACAGT
GGTGGGGAGGCACGGGCTGCGCGGCCGACAGACCCAGCCAAGAAGAAGAAGCAGCGGCCGCAACGTA
CGCACTTCAACAAGCCAGCAGTTGCAAGAGCTAGAGGCCAGTTCCAGAGGAACCGCTACCCGACATGAG
CATGAGGGAGGAGATCGCGTGTGGACCAACCTCACCGAGCCGCGGTGCGGGTCTGGTTCAAGAACCGG
CGAGCCAAGTGGCGTAAGCGCGAGCGTAACAGCAGCTGGACCTGTGCAAGGGTGGCTACGTGCCGAGT
TCAGCGCCTAGTGCAGCCCTACGAGGACGTGTACGCCCGCGTACTCTACAACAACCTGGGCCGCAA
GAGCCTGGCGCCAGCGCCGCTCTCCACCAAGAGCTTACCTTCTCAACTCCAATGAGCCCGCTGTCTGCG
CAGTCCATGTTCTCAGCACCCAGCTCCATCTCTCCATGACCATGCCGTCCAGCATGGGCCAGGCGCCG
TGCTGGCATGCCAAGTCCGGCCTCAACAACATCAACAACCTCACCGGCTCCTCGCTCAACTCGGCCAT
GTGCCCGGGCGCTTGGCCGTACGGCACTCCCGCCTCGCCCTACAGCGTCTACCGGGACACGTGCAACTCG
AGCCTAGCCAGCCTGCGGCTCAAGTCCAACAGCACTCGTCGTTGGCTACGGCGGCTCGAGGGCCCGG
CCTCGGGCCTCAACGCGTGCCAGTACAACAGC

AG**CGGACCG**ACGCGTACGCGCCGCTCGAGCAGAACTCATCTCAGAAGAGGATCTGGCAGCAAATGATATCC
TGGATTACAAGGATGACGACGATAAGGTTTAA



[View online »](#)

Protein Sequence: >RC202570 protein sequence
Red=Cloning site Green=Tags(s)

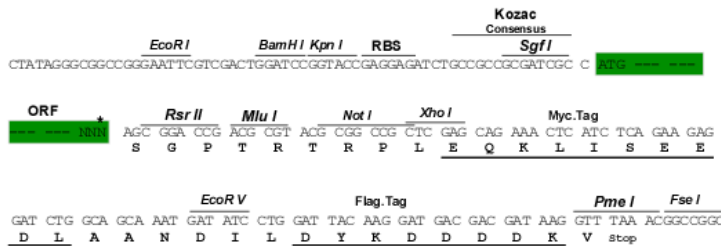
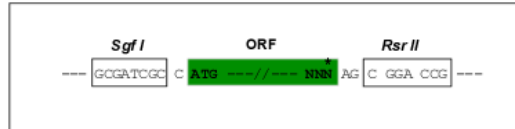
MDAFKGGMSLERLPEGLRPPPPPHDMGPAFHLARPADPREPLENSASESSDTELPEKERGGEPKGPEDS
 GAGGTGCGGADDPAKKKKQRRQRTHTFSQQLQELEATFQRNRYPDMSMREEIAVWTNLTEPRVRVWFKNR
 RAKWRKRERNQQLDLCKGGYVQFSGLVQPYEDVYAAGYSYNNWAAKSLAPAPLSTKSFTFFNSMSPLSS
 QSMFSAPSSISSMTMPSSMGPAVPGMPNSGLNNINNL TGSSLNSAMSPGACPYGTPASPYSVYRDT CNS
 SLASLRKSKQHSSFGYGGGLQGPASGLNACQYNS

SGPTRTRPLEQKLISEEDLAANDILDYKDDDDKV

Restriction Sites: SgfI-RsrII

Cloning Scheme:

Cloning sites used for ORF Shuttling:



* The last codon before the Stop codon of the ORF

ACCN: NM_002653

ORF Size: 942 bp

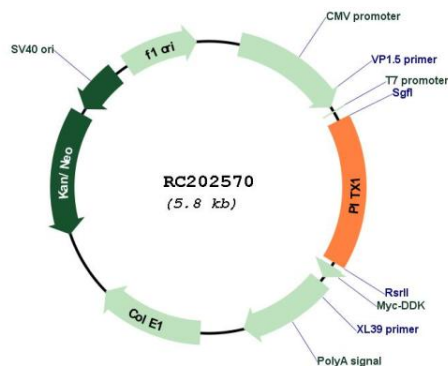
OTI Disclaimer: Due to the inherent nature of this plasmid, standard methods to replicate additional amounts of DNA in E. coli are highly likely to result in mutations and/or rearrangements. Therefore, OriGene does not guarantee the capability to replicate this plasmid DNA. Additional amounts of DNA can be purchased from OriGene with batch-specific, full-sequence verification at a reduced cost. Please contact our customer care team at custsupport@origene.com or by calling 301.340.3188 option 3 for pricing and delivery.

The molecular sequence of this clone aligns with the gene accession number as a point of reference only. However, individual transcript sequences of the same gene can differ through naturally occurring variations (e.g. polymorphisms), each with its own valid existence. This clone is substantially in agreement with the reference, but a complete review of all prevailing variants is recommended prior to use. [More info](#)

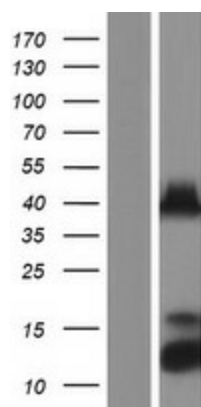
OTI Annotation: This clone was engineered to express the complete ORF with an expression tag. Expression varies depending on the nature of the gene.

Components:	The ORF clone is ion-exchange column purified and shipped in a 2D barcoded Matrix tube containing 10ug of transfection-ready, dried plasmid DNA (reconstitute with 100 ul of water).
Reconstitution Method:	<ol style="list-style-type: none"> 1. Centrifuge at 5,000xg for 5min. 2. Carefully open the tube and add 100ul of sterile water to dissolve the DNA. 3. Close the tube and incubate for 10 minutes at room temperature. 4. Briefly vortex the tube and then do a quick spin (less than 5000xg) to concentrate the liquid at the bottom. 5. Store the suspended plasmid at -20°C. The DNA is stable for at least one year from date of shipping when stored at -20°C.
Note:	Plasmids are not sterile. For experiments where strict sterility is required, filtration with 0.22um filter is required.
RefSeq:	NM_002653.5
RefSeq Size:	2383 bp
RefSeq ORF:	945 bp
Locus ID:	5307
UniProt ID:	P78337
Cytogenetics:	5q31.1
Protein Families:	Transcription Factors
MW:	34.1 kDa
Gene Summary:	This gene encodes a member of the RIEG/PITX homeobox family, which is in the bicoid class of homeodomain proteins. Members of this family are involved in organ development and left-right asymmetry. This protein acts as a transcriptional regulator involved in basal and hormone-regulated activity of prolactin. [provided by RefSeq, Jul 2008]

Product images:



Circular map for RC202570



Western blot validation of overexpression lysate (Cat# [LY419187]) using anti-DDK antibody (Cat# [TA50011-100]). Left: Cell lysates from untransfected HEK293T cells; Right: Cell lysates from HEK293T cells transfected with RC202570 using transfection reagent MegaTran 2.0 (Cat# [TT210002]).