

Product datasheet for **RC202566**

TCHP (NM_032300) Human Tagged ORF Clone

Product data:

Product Type:	Expression Plasmids
Product Name:	TCHP (NM_032300) Human Tagged ORF Clone
Tag:	Myc-DDK
Symbol:	TCHP
Synonyms:	TpMs
Mammalian Cell Selection:	Neomycin
Vector:	pCMV6-Entry (PS100001)
E. coli Selection:	Kanamycin (25 ug/mL)



[View online »](#)

ORF Nucleotide Sequence:

>RC202566 ORF sequence
 Red=Cloning site Blue=ORF Green=Tags(s)

TTTTGTAATACGACTCACTATAGGGCGGCCGGAATTCGTCGACTGGATCCGGTACCGAGGAGATCTGCC
 GCC**GCGATCGCC**

ATGGCGCTCCCGACGCTGCCGTCTACTGGTGCAGCCAGCAGCGCCTGAATCAGCAGCTAGCACGACAGC
 GAGAGCAGGAGGCCGGCTTCGGCAGCAGTGGGAGCAGAACAGCCGTACTTCAGGATGTCTGACATCTG
 CAGCTCCAAACAGGCAGAAATGGAGCTCTAAAACCTCTACCAGCGGAGCATGCATGCCTATCAGCGGGAG
 AAGATGAAGGAGGAGAAGAGGAGGAGTCTGGAGGCCGACGGGAAAAGCTCAGGCAGCTCATGCAGGAGG
 AGCAGGACCTGCTGGCCAGAGAAGTGGAGGAGCTGAGGCTGAGCATGAACTTGCAGGAAAAGAAGAATCCG
 GGAGCAGCACGGGAAGCTGAAATCAGCCAAAGAAGAGCAGAGGAACTGATTGCTGAACAACTTTTGTAC
 GAACTTGAAAAAGAACAACCCGAACTTCGAGAGATGGAGCTGGACCTTACCAGAAGCATGTCGTAA
 ACTTTGGGAAATGCAGAAAAGAAGAAAAAACAGCAAGAAGCCACCGCAGAGCAAGAGAACAAACGGTA
 TAAAAATGAATATGAAAGGGCCGAAGGGAGGCGCTAGAAAGGATGAAAGCTGAAGAGGAGAGGAGGCAG
 CTGGAGGACAAGCTCCAGGCCGAGGCACTGCTGCAACAGATGGAGGAGCTGAAGCTGAAGGAGGTGGAGG
 CGACAAACTAAAGAAGGAGCAGGAGAATCTGTTGAAGCAGCGGTGGGAGCTAGAGAGGCTGGAGGAAGA
 GCGAAAGCAGATGGAAGCCTTCCGGCAGAAGGCAGAGCTGGGGCGTTTCTTGAGACATCAGTATAACGCT
 CAACTCAGCAGACGCACACAGCAGATCCAAGAGGAGCTGGAGGCAGACAGGCGGATCCTGCAGGCCCTCC
 TCGAGAAGGAGGACGAGAGCCAGCGCTCCACCTGGCCAGGCGGGAGCAGGTGATGGCCGATGTGGCCTG
 GATGAAGCAGGCCATTGAGGAGCAGCTGCAGCTGGAGCGGGCGGGAGGAGCTGCAGATGCTGCTG
 AGGGAGGAGGCCAAGGAGATGTGGGAAAAGAGAGGAGGAGTGGGCCGAGAGCGCAGCGCACGGGACA
 GACTGATGAGCGAGGTTCTGACAGGGAGACAACAGCAAAATACAAGAGAAGATTGAGCAGAACCAGGGACA
 ACAAGAGGAATCCCTGAAACACAGGGAGCAACTTATTGAAATCTTGAGGAGGTGAGAGAGTTGGCTCGT
 CCGCAGAAAAGAGGAGTGAAGAGCTGAAATCGGCCAGGAAGCAGGAGCTGGAAGCCAGGTTGCAGAGC
 GCCGGCTGCAGGCATGGGAAGCAGACCAGCAGGAGGAGGAAGAGGAGGAGGCCCGCGGGTTCGAGCA
 GCTCTCAGATGCCCTGCTGCAGCAGGAGGCGGAGACTATGGTGAGCAGGGCTACCGGCCTAAGCCTTAC
 GGACATCCAAAATTGCTTGAAC

ACGCGTACGCGGCCGCTCGAGCAGAACTCATCTCAGAAGAGGATCTGGCAGCAATGATATCCTGGATT
 ACAAGGATGACGACGATAAGGTTTAA

Protein Sequence:

>RC202566 protein sequence
 Red=Cloning site Green=Tags(s)

MALPTLPSYWCSQQLRNQQLARQREQEARLRQQWEQNSRYFRMSDICSSKQAEWSSKTSYQSRMHAYQRE
 KMKEEKRRSLEARREKLRQLMQEEQDLLARELEELRLSMNLQERRIREQHGLKLSAKEEQRKLIAEQLLY
 EHWKKNPKLREMELDLHQKHVNSWEMQKEEKQEQEATAEQENKRYENEYERARREALERMKAEEERRQ
 LEDKLQAEALLQMEELKLEVEATKLKKEQENLLKQRWELERLEEERKQMEAFRQKAEGRFLRHQYNA
 QLSRRTQQIQEELADRILQALLEKEDESQRLHLARREQVMADVAVMKQAIIEQLQLERAREAELQMLL
 REEAKEMWEKREAEWARERSARDRLMSEVL TGRQQIQEKIEQNRAQEE SLKHREQLIRNLEEVRELAR
 REKEESEKLSARKQELEAQAERRLQAWADQQEEEEEEARRVEQLSDALLQQAETMAEQGYRPKPY
 GHPKIAWN

TRTRPLEQKLISEEDLAANDILDYKDDDDKV

Chromatograms:

https://cdn.origene.com/chromatograms/mk6675_d03.zip

Restriction Sites:

SgfI-MluI

Cloning Scheme:


ACCN: NM_032300

ORF Size: 1494 bp

OTI Disclaimer: The molecular sequence of this clone aligns with the gene accession number as a point of reference only. However, individual transcript sequences of the same gene can differ through naturally occurring variations (e.g. polymorphisms), each with its own valid existence. This clone is substantially in agreement with the reference, but a complete review of all prevailing variants is recommended prior to use. [More info](#)

OTI Annotation: This clone was engineered to express the complete ORF with an expression tag. Expression varies depending on the nature of the gene.

Components: The ORF clone is ion-exchange column purified and shipped in a 2D barcoded Matrix tube containing 10ug of transfection-ready, dried plasmid DNA (reconstitute with 100 ul of water).

Reconstitution Method:

1. Centrifuge at 5,000xg for 5min.
2. Carefully open the tube and add 100ul of sterile water to dissolve the DNA.
3. Close the tube and incubate for 10 minutes at room temperature.
4. Briefly vortex the tube and then do a quick spin (less than 5000xg) to concentrate the liquid at the bottom.
5. Store the suspended plasmid at -20°C. The DNA is stable for at least one year from date of shipping when stored at -20°C.

RefSeq: [NM_032300.5](#)

RefSeq Size: 3172 bp

RefSeq ORF: 1497 bp

Locus ID: 84260

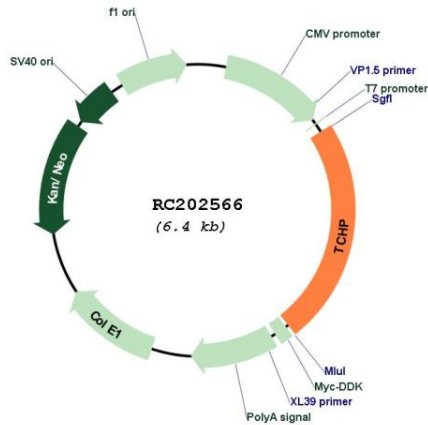
UniProt ID: [Q9BT92](#)

Cytogenetics: 12q24.11

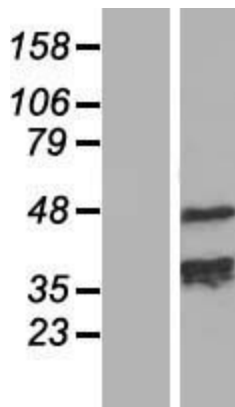
MW: 61.1 kDa

Gene Summary: Tumor suppressor which has the ability to inhibit cell growth and be pro-apoptotic during cell stress. Inhibits cell growth in bladder and prostate cancer cells by a down-regulation of HSPB1 by inhibiting its phosphorylation. May act as a 'capping' or 'branching' protein for keratin filaments in the cell periphery. May regulate K8/K18 filament and desmosome organization mainly at the apical or peripheral regions of simple epithelial cells (PubMed:15731013, PubMed:18931701). Is a negative regulator of ciliogenesis (PubMed:25270598).[UniProtKB/Swiss-Prot Function]

Product images:



Circular map for RC202566



Western blot validation of overexpression lysate (Cat# [LY428388]) using anti-DDK antibody (Cat# [TA50011-100]). Left: Cell lysates from untransfected HEK293T cells; Right: Cell lysates from HEK293T cells transfected with [RC227291] using transfection reagent MegaTran 2.0 (Cat# [TT210002]).