

Product datasheet for RC202563

FAM167B (NM_032648) Human Tagged ORF Clone

Product data:

Product Type: Expression Plasmids
Product Name: FAM167B (NM_032648) Human Tagged ORF Clone
Tag: Myc-DDK
Symbol: FAM167B
Synonyms: C1orf90; DIORA-2
Mammalian Cell Selection: Neomycin
Vector: pCMV6-Entry (PS100001)
E. coli Selection: Kanamycin (25 ug/mL)
ORF Nucleotide Sequence: >RC202563 ORF sequence
 Red=Cloning site Blue=ORF Green=Tags(s)

TTTTGTAATACGACTCACTATAGGGCGGCCGGAATTCGTCGACTGGATCCGGTACCGAGGAGATCTGCC
 GCCCGGATCGCC

ATGTCCCTGGGGCTACTGAAATTCAGGCAGTGGGTGAAGAGGACGAGGAGGATGAGGAGGGGGAGAGCC
 TGGACTCTGTGAAGGCACTGACAGCCAAGCTGCAGCTGCAGACTCGGCGGCCCTCATATCTGGAGTGGAC
 AGCCAGGTCCAGAGCCAGGCCCTGGCGCAGGGCCCAAGCCAACTGGACCAGGGGGACCTGGGGACATC
 TGTGGTTTCGACTCAATGGACTCCGCCCTTGTGGTCCGACGGGAGCTGCGGGAGATGCAGGCGCAGG
 ACAGGCAGCTGGCAGGGCAGCTGCTGCGGCTGCGGGCCAGCTGCACCGACTGAAGATGGACCAAGCCTG
 TCACCTGCACCAGGAGCTGCTGGATGAGGCCGAGCTGGAGCTGGAGCTGGAGCCCGGGGCCGCTAGCC
 CTGGCCCCGCTGCTGCGGCACCTGGGCCTCACGCGCATGAACATCAGCGCCCGGCGCTTACCCTCTGC

ACGCGTACGCGGCCGCTCGAGCAGAACTCATCTCAGAAGAGGATCTGGCAGCAAATGATATCCTGGATT
 ACAAGGATGACGACGATAAGGTTTAA

Protein Sequence: >RC202563 protein sequence
 Red=Cloning site Green=Tags(s)

MSLGLLKFQAVGEEDEEDEEGESLDSVKALTAKLQLQTRRPSYLEWTAQVQSQAWRRAQAKPGPGPGDI
 CGFDSMSALEWLRRELREMQAQRQLAGQLRLRAQLHRLKMDQACHLHQELLDEAELELELEPGAGLA
 LAPLLRHLGLTRMNISARRFTLC

TRTRPLEQKLISEEDLAANDILDYKDDDDKV

Chromatograms: https://cdn.origene.com/chromatograms/mk6389_g12.zip



[View online »](#)

Restriction Sites: SgfI-MluI

Cloning Scheme:



ACCN: NM_032648

ORF Size: 489 bp

OTI Disclaimer: The molecular sequence of this clone aligns with the gene accession number as a point of reference only. However, individual transcript sequences of the same gene can differ through naturally occurring variations (e.g. polymorphisms), each with its own valid existence. This clone is substantially in agreement with the reference, but a complete review of all prevailing variants is recommended prior to use. [More info](#)

OTI Annotation: This clone was engineered to express the complete ORF with an expression tag. Expression varies depending on the nature of the gene.

Components: The ORF clone is ion-exchange column purified and shipped in a 2D barcoded Matrix tube containing 10ug of transfection-ready, dried plasmid DNA (reconstitute with 100 ul of water).

Reconstitution Method:

1. Centrifuge at 5,000xg for 5min.
2. Carefully open the tube and add 100ul of sterile water to dissolve the DNA.
3. Close the tube and incubate for 10 minutes at room temperature.
4. Briefly vortex the tube and then do a quick spin (less than 5000xg) to concentrate the liquid at the bottom.
5. Store the suspended plasmid at -20°C. The DNA is stable for at least one year from date of shipping when stored at -20°C.

RefSeq: [NM_032648.3](#)

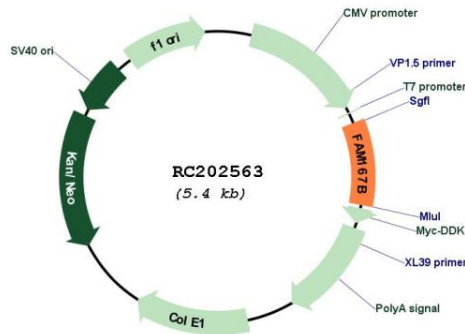
RefSeq Size: 969 bp

RefSeq ORF: 492 bp

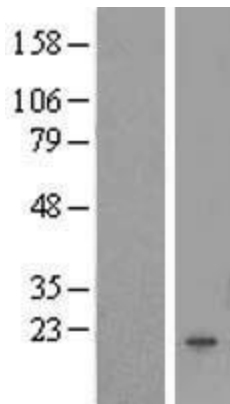
Locus ID: 84734

UniProt ID: [Q9BTA0](#)
 Cytogenetics: 1p35.2
 MW: 18.4 kDa

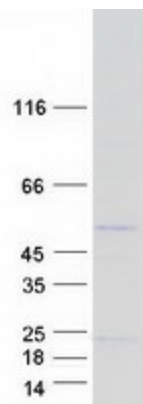
Product images:



Circular map for RC202563



Western blot validation of overexpression lysate (Cat# [LY409985]) using anti-DDK antibody (Cat# [TA50011-100]). Left: Cell lysates from untransfected HEK293T cells; Right: Cell lysates from HEK293T cells transfected with RC202563 using transfection reagent MegaTran 2.0 (Cat# [TT210002]).



Coomassie blue staining of purified FAM167B protein (Cat# [TP302563]). The protein was produced from HEK293T cells transfected with FAM167B cDNA clone (Cat# RC202563) using MegaTran 2.0 (Cat# [TT210002]).

