

Product datasheet for RC202552

RET (NM_020630) Human Tagged ORF Clone

Product data:

Product Type:	Expression Plasmids
Product Name:	RET (NM_020630) Human Tagged ORF Clone
Tag:	Myc-DDK
Symbol:	RET
Synonyms:	CDHF12; CDHR16; HSCR1; MEN2A; MEN2B; MTC1; PTC; RET-ELE1
Mammalian Cell Selection:	Neomycin
Vector:	pCMV6-Entry (PS100001)
E. coli Selection:	Kanamycin (25 ug/mL)
ORF Nucleotide Sequence:	>RC202552 representing NM_020630. Blue=ORF Red=Cloning site Green=Tag(s)

```
GCTCGTTTGTAGTGAACCGTCAGAATTTGTAAACGACTCACTATAGGGCGCCGGGAATTCGTCGACTG
GATCCGGTACCGAGGAGATCTGCCGCCGCGATCGCC
ATGGCGAAGGCGACGTCCGGTGCCGCGGGGCTGCGTCTGCTGTTGCTGCTGCTGCCGCTGCTAGGC
AAAGTGGCATTGGGCTCTACTTCTCGAGGGATGCTTACTGGGAGAAGCTGTATGTGACCAGGCGGCC
GGCAGCCCTTGCTGTACGTCCATGCCCTGCGGGACGCCCTGAGGAGGTGCCAGCTTCCGCTGGGC
CAGCATCTACGGCACGTACCGCACACGGCTGCATGAGAACAAGTGGATCTGCATCCAGGAGGACACC
GGCTCCTCTACCTTAACCGGAGCCTGGACCATAGCTCCTGGGAGAAGCTCAGTGTCCGCAACCGCGGC
TTTCCCCTGCTCACCGTCTACCTCAAGGTCTTCTGTCACCCACATCCCTTCGTGAGGGCGAGTGCCAG
TGGCCAGGCTGTGCCCGGTATACTTCTCCTTCTCAACACCTCCTTCCAGCCTGCAGCTCCCTCAAG
CCCCGGGAGCTCTGCTTCCCAGAGACAAGGCCCTCCTTCCGCATTCCGGGAGAACCACCCCAAGGACC
TTCCACCAGTTCGCTGCTGCCTGTGCAGTCTTGTGCCCAACATCAGCGTGGCTACAGGCTCCTG
GAGGGTGAGGGTCTGCCCTTCCGCTGCGCCCGGACAGCCTGGAGGTGAGCACGCGCTGGGCCCTGGAC
CGCAGCAGCGGGAGAAGTACGAGCTGGTGGCCGTGTGCACCGTGCACCGCGCGCGCGAGGAGGTG
GTGATGGTGCCCTTCCCGGTGACCGTGTACGACGAGGACGACTCGGCGCCACCTTCCCCGCGGGCGTC
GACACCGCCAGCGCCGTGGTGGAGTTCAAGCGGAAGGAGGACACCGTGGTGGCCACGCTGCTCCCCGGGAC
ACCTGGGCCAGCAGACCTTCCGGGTGGAACACTGGCCCAACGAGACCTCGGTCCAGGCCAACGGCAGC
TTCGTGCGGGCGACCGTACATGACTATAGGCTGGTTCTCAACCGAACCTCTCCATCTCGGAGAACCGC
ACCATGCAGCTGGCGGTGCTGGTCAATGACTCAGACTTCCAGGGCCAGGAGCGGGCTCCTCTTGTCTC
CACTTCAACGTGTGCGTGTGCCGGTACGCTGCACCTGCCAGTACCTACTCCCTCCTCGTGAGCAGG
AGGGCTCGCCGATTTGCCAGATCGGAAAGTCTGTGTGAAAAGTCCAGGCATTACAGTGGCATCAAC
GTCCAGTACAAGCTGCATTCTCTGGTCCAACTGCAGCAGCTAGGGGTGGTCACTCAGCCGAGGAC
ACCTCGGGGATCCTGTTGTGAATGACACCAAGGCCCTGCGGCGGCCAAGTGTGCCGAACCTCACTAC
ATGGTGGTGGCCACCGACGAGACCTTAGGACAGGCCAGGCCAGCTGCTTGTAAACAGTGGAGGG
```



[View online »](#)

TCATATGTGGCCGAGGAGCGGGCTGCCCCCTGTCTGTGCAGTCAGCAAGAGACGGCTGGAGTGTGAG
 GAGTGTGGCGGCCTGGGCTCCCCAACAGGCAGGTGTGAGTGGAGGCAAGGAGATGGCAAAGGGATCACC
 AGGAACTTCTCCACCTGCTCTCCAGCACCAAGACCTGCCCCGACGGCCACTGCGATGTTGTGGAGACC
 CAAGACATCAACATTTGCCCTCAGGACTGCCTCCGGGGCAGCATTGTTGGGGGACACGAGCCTGGGGAG
 CCCCAGGGGATTAAGCTGGCTATGGCACCTGCAACTGCTTCCCTGAGGAGGAGAAGTGTCTGCGAG
 CCCGAAGACATCCAGGATCCACTGTGCGACGAGCTGTCCGCACGGTGATCGCAGCCGCTCTCTCTTC
 TCCTTCATCGTCTCGGTGCTGTCTGCCTTCTGCATCCACTGCCACAAGTTGCCACAAGCCA
 CCCATCTCCTCAGCTGAGATGACCTTCCGGAGGCCGCCAGGCCTTCCGGGTCACTACTCCTCTTCC
 AGTGCCCGCCGGCCCTCGCTGGACTCCATGGAGAACCAGGTCTCCGTGGATGCCTTCAAGATCCTGGAG
 GATCCAAAGTGGGAATTCCTCGGAAGAACTTGGTTCTTGAAAAACTCTAGGAGAAGGCGAATTTGGA
 AAAGTGGTCAAGGCAACGGCCTTCCATCTGAAAGGCAGAGCAGGGTACACCACGGTGGCCGTGAAGATG
 CTGAAAGAGAACGCCCTCCCGAGTGAGCTTCGAGACCTGCTGTCAGAGTTCAACGCTCTGAAGCAGGTC
 AACCACCCACATGTCATCAAATGTATGGGGCCTGCAGCCAGGATGGCCCGCTCCTCCTCATCGTGGAG
 TAGCCAAATACGGCTCCTGCGGGCTTCTCCGCGAGAGCCGAAAGTGGGGCCTGGCTACCTGGGC
 AGTGGAGGCAGCCGCAACTCCAGCTCCCTGGACCACCCGATGAGCGGGCCCTCACCATGGCGACCTC
 ATCTCATTGCTGGCAGATCTCACAGGGGATGCAAGTATCTGGCCGAGATGAAGCTCGTTTATCGGGAC
 TTGGCAGCCAGAAACATCCTGGTGTAGCTGAGGGGCGGAAGATGAAGATTTCCGATTTCCGGCTGTCCCGA
 GATGTTTATGAAGAGGATTGCTACGTGAAGAGGAGCCAGGGTCCGATTCCAGTTAAATGGATGGCAATT
 GAATCCCTTTTGTATCATATCTACACCAGCAAAGTGTATGTTGTTTGGTGTCTGCTGTGGGAG
 ATCGTGACCCTAGGGGAAACCCCTATCCTGGGATTCTCCTGAGCGGCTCTTCAACCTTCTGAAGACC
 GGCCACCGGATGGAGAGGCCAGACAACCTGCAGCGAGGAGATGACTGCCTGATGCTGCAATGCTGGAAG
 CAGGAGCCGGACAAAAGCCGGTGTTCGCGACATCAGCAAAGACCTGGAGAAGATGATGGTTAAGAGG
 AGAGACTACTGGACCTGCGGGCTCCACTCCATCTGACTCCCTGATTTATGACGACGGCCTCTCAGAG
 GAGGAGACACCGCTGGTGGACTGTAATAATGCCCCCTCCCTCGAGCCCTCCCTTCCACATGGATTGAA
 AACAACTCTATGGTAGAATTTCCCATGCAATTTACTAGATT
 ACGCGTACGCGGCCGCTCGAGCAGAACTCATCTCAGAAGAGGATCTGGCAGCAATGATATCCTGGAT
 TACAAGGATGACGACGATAAGGTTAAACGGCCGGC

Protein Sequence:

>Peptide sequence encoded by RC202552
 Blue=ORF Red=Cloning site Green=Tag(s)

MAKATSGAAGRLLLLLLLPLLGKVALGLYFSRDAYWEKLYVDQAAGTPLLYVHALRDAPEEVPSFRLG
 QHLYGTYRTRLHENNWICIQEDTGLLYLNRSLDHSSWEKLSVRNRGFPLLTVYLKVFSLPSTSLREGEQ
 WPGCARVYFSFFNTSFPACSSLKPRELCPETRPSFRIRENRPPGTFHQFRLLPVQFLCPNISVAYRLL
 EGEGLPFRCAPDSLEVSTRWALDREQREKYLAVCTVHAGAREEVVMPFPVTVYDEDDSAPTFPAGV
 DTASAVVEFKRKEDTVVATLRVFDADVVPASGELVRRYTSTLLPGDTWAQQTFRVEHWPNETSVQANGS
 FVRATVHDYRLVLNRNLSISENRTMQLAVLVNDSDFQPGGAGVLLLFHNVSVLPVSLHLPSTYSLSVSR
 RARRFAQIGKVCVENCQAFSGINVQYKLHSSGANCSLGVVTS AEDTSGILFVNDTKALRRPKCAELHY
 MVVATDQQT SRQAQAQLLVTVEGSYVAEEAGCPLSCAVSKRRLECEECCGLGSPTGRCEWRQGDGKIT
 RNFSTCSPSTKTCPDGHCDVETQDINICPDCLRGSIVGGHEPGEPRGIKAGYGTNCNCFPEEEKCFCE
 PEDIQDPLCDEL CRTVIAAAVLF SFIVSVLLS AF CIHCHYHKFAHKPPISSAEMTFRRPAQAFPVSYS
 SARRPSLDSMENQVSDAFKILEDPKWEFPRKNLVLGKTLGEGEFKGVVKATAFHLKGRAGYTTAVKM
 LKENASPEL RDLLSEFNVLKQVNHPIKLYGACSDGPLLLIVEYAKYGLRGLRESRKGPGYLG
 SGGSRNSSLDHPDERAL TMGDLISFAWQISQGMQYLAEMKLVHRDLAARNILVAEGRKMKISDFGLSR
 DVYEEDSYVKRSQGRIPVKWMAIESLFDHIYTTQSDVWSFGVLLWEIVTLGGNPYPGIPPERLFNLLKT
 GHRMERPDNCSEEMYCLMLQCWKQEPDKRPVFA DISKDLKMMVKRRDYLDLAASTPSDSL IYDDGLSE
 EETPLVDCNNAPLPRALPSTWIENKLYGRISHAFTRF
 TRTRPLEQKLI SEEDLAANDILDYKDDDDKV

Chromatograms:

https://cdn.origene.com/chromatograms/mg4719_g05.zip

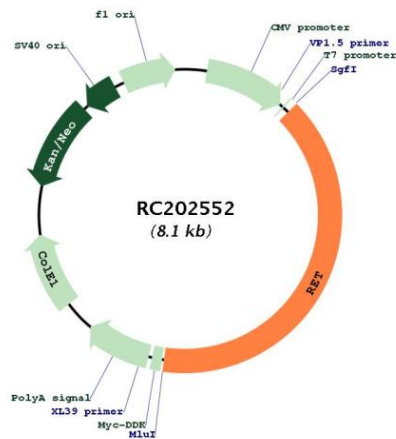
Restriction Sites:

SgfI-MluI

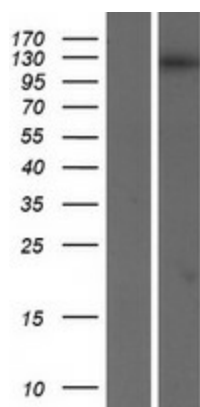
UniProt ID: [P07949](#)
Cytogenetics: 10q11.21
Protein Families: Druggable Genome, Protein Kinase, Transmembrane
Protein Pathways: Endocytosis, Pathways in cancer, Thyroid cancer
MW: 119.8 kDa

Gene Summary: This gene encodes a transmembrane receptor and member of the tyrosine protein kinase family of proteins. Binding of ligands such as GDNF (glial cell-line derived neurotrophic factor) and other related proteins to the encoded receptor stimulates receptor dimerization and activation of downstream signaling pathways that play a role in cell differentiation, growth, migration and survival. The encoded receptor is important in development of the nervous system, and the development of organs and tissues derived from the neural crest. This proto-oncogene can undergo oncogenic activation through both cytogenetic rearrangement and activating point mutations. Mutations in this gene are associated with Hirschsprung disease and central hypoventilation syndrome and have been identified in patients with renal agenesis. [provided by RefSeq, Sep 2017]

Product images:



Circular map for RC202552



Western blot validation of overexpression lysate (Cat# [LY412424]) using anti-DDK antibody (Cat# [TA50011-100]). Left: Cell lysates from untransfected HEK293T cells; Right: Cell lysates from HEK293T cells transfected with RC202552 using transfection reagent MegaTran 2.0 (Cat# [TT210002]).