

Product datasheet for **RC202530**

RIP2 (RIPK2) (NM_003821) Human Tagged ORF Clone

Product data:

Product Type:	Expression Plasmids
Product Name:	RIP2 (RIPK2) (NM_003821) Human Tagged ORF Clone
Tag:	Myc-DDK
Symbol:	RIP2
Synonyms:	CARD3; CARDIAK; CCK; GIG30; RICK; RIP2
Mammalian Cell Selection:	Neomycin
Vector:	pCMV6-Entry (PS100001)
E. coli Selection:	Kanamycin (25 ug/mL)



[View online »](#)

ORF Nucleotide Sequence:

>RC202530 ORF sequence
 Red=Cloning site Blue=ORF Green=Tags(s)

TTTTGTAATACGACTCACTATAGGGCGGCCGGAATTCGTCGACTGGATCCGGTACCGAGGAGATCTGCC
 GCC**CGCATCGCC**

ATGAACGGGGAGGCCATCTGCAGCGCCCTGCCACCATTCCCTACCACAACTCGCCGACCTGCGCTACC
 TGAGCCGCGGCGCCTCTGGCACTGTGTCGTCCGCCGCCACGCAGACTGGCGCGTCCAGGTGGCCGTGAA
 GCACCTGCACATCCACACTCCGCTGCTCGACAGTAAAAGAAAGGATGTCTTAAGAGAAGCTGAAATTTTA
 CACAAAGCTAGATTTAGTTACATTCTTCCAATTTTGGAAATTTGCAATGAGCCTGAATTTTGGAAATAG
 TTAAGTAAATACATGCCAAATGGATCATTAAATGAACTCTACATAGGAAAATGAATATCCTGATGTTGC
 TTGGCCATTGAGATTTTCGCATCCTGCATGAAATGGCCTTGGTGTAAATACCTGCACAATATGACTCCT
 CCTTTACTTCATCATGACTTGAAGACTCAGAATATCTTATTGGACAATGAATTTTCATGTTAAGATTGCAG
 ATTTTGGTTTATCAAAGTGGCGCATGATGTCCCTCTCACAGTACGAAGTAGCAAATCTGCACCAGAAGG
 AGGGACAATTATCTATATGCCACCTGAAAATGAACTTGAACCTGGACAAAAATCAAGGGCCAGTATCAAGCAC
 GATATATATAGCTATGCAGTTATCACATGGGAAGTGTATCCAGAAAACAGCCTTTTGAAGATGTCACCA
 ATCCTTTGCGATAATGTATAGTGTGCACAAGGACATCGACCTGTTATTAATGAAGAAAAGTTTGCATA
 TGATATACCTCACCGAGCACGTATGATCTCTCTAATAGAAAAGTGGATGGGCACAAAATCCAGATGAAAGA
 CCATCTTTCTTAAATGTTTAAAGAACTTGAACCAAGTTTGGAGAACATTTGAAGAGATAACTTTTCTTG
 AAGCTGTTATTCAGCTAAAGAAAACAAAGTTACAGAGTGTTCAGTGCATTACCTATGTGACAAGAA
 GAAAATGGAATATCTCTGAACATACCTGTAATCATGGTCCACAAGAGGAATCATGTGGATCCTCTCAG
 CTCCATGAAAATAGTGGTCTCCTGAACTTCAAGTCCCTGCCAGCTCCTCAAGACAATGATTTTTTAT
 CTAGAAAAGCTCAAGACTGTTATTTTGAAGCTGCATCACTGTCTGGAAATCACAGTTGGGATGCAC
 CATTCTGGATCTCAAAGGGCTGCATTCTGTGATCACAAGACCCTCCATGCTCTTCAGCAATAATAAAT
 CCACTCTCAACTGCAGGAACTCAGAAGCTCTGCAGCCTGGTATAGCCCAGCAGTGGATCCAGAGCAAAA
 GGAAGACATTGTGAACCAATGACAGAAGCCTGCCTTAAACCAGTCGCTAGATGCCCTTCTGTCCAGGGA
 CTTGATCATGAAAGAGGACTATGAACTTGTAGTACCAAGCCTACAAGGACCTCAAAAGTCAGACAATTA
 CTAGACACTACTGACATCCAAGGAGAAGAAATTTGCCAAAGTTATAGTACAAAAATGAAAGATAACAAAC
 AAATGGGTCTTCAGCCTTACCCGAAAATACTTGTGGTTTCTAGATCACCATCTTAAATTTACTTCAAAA
 TAAAAGCATG

ACGCGTACGCGGCCGCTCGAGCAGAACTCATCTCAGAAGAGGATCTGGCAGCAAATGATATCCTGGATT
 ACAAGGATGACGACGATAAGGTTTAA

Protein Sequence:

>RC202530 protein sequence
 Red=Cloning site Green=Tags(s)

MNGEAI CSALPTIPYHKLADRLYLSRGASGTVSSARHADWRVQVAVKHLHIHTPLLDSEKDVLR EAEIL
 HKARFSYILPILGICNEPEFLGIVTEYMPNGSLNELLHRKTEYPDVAWPLRFRLHEIALGVNYLHNMT
 PLLHDLKTQNIILLDFEFVHKIADFGLSKWRMMSLSQSRSSKSAPEGGTIIYMPENYEPGQKSRASIKH
 DIYSYAVITWEVLSRKQPFEDVTNPLQIMYSVSQGHRPVINEESLPYDIPHRARMISLIESGWAQNPDER
 PSFLKCLIELEPVLRTFEEITFLEAVIQLKTKLQSVSSAIHLCDKMKMELSLNIPVNHGPQEESCGSSQ
 LHENSGPETSRLPAPQDNDFLSRKAQDCYFMKLHHCPCGNHSDSTISGSQRAAFCDHKTTPCSSAIIN
 PLSTAGNSERLQPGIAQQWIQSKREDIVNQMTACLNQSLDALLSRDLIMKEDYELVSTKPTRTSKVRQL
 LDTTDIQGEEFAKVIVQKLDKNQMGLPYPEILVVSRSPLNLLQNKSM

TRTRPLEQKLISEEDLAANDILDYKDDDDKV

Chromatograms:

https://cdn.origene.com/chromatograms/mk6277_b01.zip

Restriction Sites:

Sgfl-MluI

Cloning Scheme:


ACCN: NM_003821

ORF Size: 1620 bp

OTI Disclaimer: Due to the inherent nature of this plasmid, standard methods to replicate additional amounts of DNA in E. coli are highly likely to result in mutations and/or rearrangements. Therefore, OriGene does not guarantee the capability to replicate this plasmid DNA. Additional amounts of DNA can be purchased from OriGene with batch-specific, full-sequence verification at a reduced cost. Please contact our customer care team at custsupport@origene.com or by calling 301.340.3188 option 3 for pricing and delivery.

The molecular sequence of this clone aligns with the gene accession number as a point of reference only. However, individual transcript sequences of the same gene can differ through naturally occurring variations (e.g. polymorphisms), each with its own valid existence. This clone is substantially in agreement with the reference, but a complete review of all prevailing variants is recommended prior to use. [More info](#)

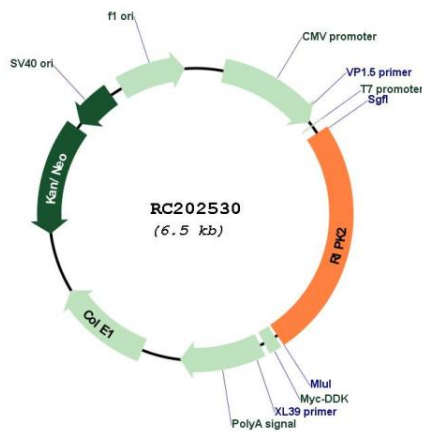
OTI Annotation: This clone was engineered to express the complete ORF with an expression tag. Expression varies depending on the nature of the gene.

Components: The ORF clone is ion-exchange column purified and shipped in a 2D barcoded Matrix tube containing 10ug of transfection-ready, dried plasmid DNA (reconstitute with 100 ul of water).

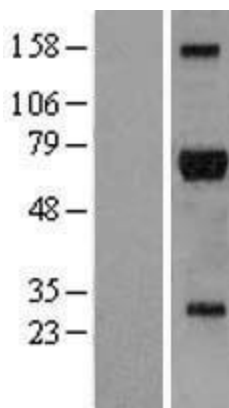
- Reconstitution Method:**
1. Centrifuge at 5,000xg for 5min.
 2. Carefully open the tube and add 100ul of sterile water to dissolve the DNA.
 3. Close the tube and incubate for 10 minutes at room temperature.
 4. Briefly vortex the tube and then do a quick spin (less than 5000xg) to concentrate the liquid at the bottom.
 5. Store the suspended plasmid at -20°C. The DNA is stable for at least one year from date of shipping when stored at -20°C.

Note:	Plasmids are not sterile. For experiments where strict sterility is required, filtration with 0.22um filter is required.
RefSeq:	NM_003821.6
RefSeq Size:	2588 bp
RefSeq ORF:	1623 bp
Locus ID:	8767
UniProt ID:	O43353
Cytogenetics:	8q21.3
Domains:	ppkinase, TyrKc, CARD, S_TKc
Protein Families:	Druggable Genome, Protein Kinase
Protein Pathways:	Neurotrophin signaling pathway, NOD-like receptor signaling pathway
MW:	61.2 kDa
Gene Summary:	This gene encodes a member of the receptor-interacting protein (RIP) family of serine/threonine protein kinases. The encoded protein contains a C-terminal caspase activation and recruitment domain (CARD), and is a component of signaling complexes in both the innate and adaptive immune pathways. It is a potent activator of NF-kappaB and inducer of apoptosis in response to various stimuli. [provided by RefSeq, Jul 2008]

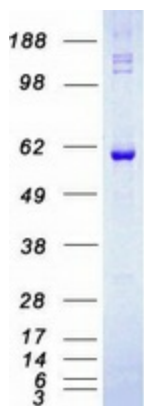
Product images:



Circular map for RC202530



Western blot validation of overexpression lysate (Cat# [LY418408]) using anti-DDK antibody (Cat# [TA50011-100]). Left: Cell lysates from untransfected HEK293T cells; Right: Cell lysates from HEK293T cells transfected with RC202530 using transfection reagent MegaTran 2.0 (Cat# [TT210002]).



Coomassie blue staining of purified RIPK2 protein (Cat# [TP302530]). The protein was produced from HEK293T cells transfected with RIPK2 cDNA clone (Cat# RC202530) using MegaTran 2.0 (Cat# [TT210002]).