

Product datasheet for RC202527

MESP1 (NM_018670) Human Tagged ORF Clone

Product data:

Product Type:	Expression Plasmids
Product Name:	MESP1 (NM_018670) Human Tagged ORF Clone
Tag:	Myc-DDK
Symbol:	MESP1
Synonyms:	bHLHc5
Mammalian Cell Selection:	Neomycin
Vector:	pCMV6-Entry (PS100001)
E. coli Selection:	Kanamycin (25 ug/mL)
Restriction Sites:	Sgfl-MluI
Cloning Scheme:	

Cloning sites used for ORF Shuttling:



* The last codon before the Stop codon of the ORF

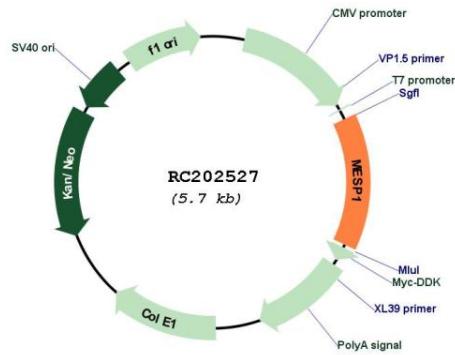
ACCN:	NM_018670
ORF Size:	804 bp



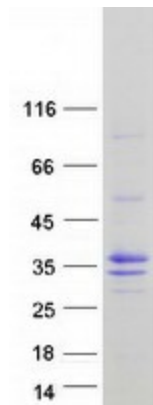
[View online >](#)

OTI Disclaimer:	The molecular sequence of this clone aligns with the gene accession number as a point of reference only. However, individual transcript sequences of the same gene can differ through naturally occurring variations (e.g. polymorphisms), each with its own valid existence. This clone is substantially in agreement with the reference, but a complete review of all prevailing variants is recommended prior to use. More info
OTI Annotation:	This clone was engineered to express the complete ORF with an expression tag. Expression varies depending on the nature of the gene.
Components:	The ORF clone is ion-exchange column purified and shipped in a 2D barcoded Matrix tube containing 10ug of transfection-ready, dried plasmid DNA (reconstitute with 100 ul of water).
Reconstitution Method:	<ol style="list-style-type: none">1. Centrifuge at 5,000xg for 5min.2. Carefully open the tube and add 100ul of sterile water to dissolve the DNA.3. Close the tube and incubate for 10 minutes at room temperature.4. Briefly vortex the tube and then do a quick spin (less than 5000xg) to concentrate the liquid at the bottom.5. Store the suspended plasmid at -20°C. The DNA is stable for at least one year from date of shipping when stored at -20°C.
RefSeq:	NM_018670.1 , NM_018670.2 , NM_018670.3 , NP_061140.1
RefSeq Size:	1181 bp
RefSeq ORF:	807 bp
Locus ID:	55897
UniProt ID:	Q9BRJ9
Cytogenetics:	15q26.1
Protein Families:	Druggable Genome, Transcription Factors
MW:	28.3 kDa
Gene Summary:	Transcription factor. Plays a role in the epithelialization of somitic mesoderm and in the development of cardiac mesoderm. Defines the rostrocaudal patterning of the somites by participating in distinct Notch pathways (By similarity).[UniProtKB/Swiss-Prot Function]

Product images:



Circular map for RC202527



Coomassie blue staining of purified MESP1 protein (Cat# [TP302527]). The protein was produced from HEK293T cells transfected with MESP1 cDNA clone (Cat# RC202527) using MegaTran 2.0 (Cat# [TT210002]).