

## Product datasheet for **RC202525L4V**

### DLX5 (NM\_005221) Human Tagged ORF Clone Lentiviral Particle

#### Product data:

Product Type:	Lentiviral Particles
Product Name:	DLX5 (NM_005221) Human Tagged ORF Clone Lentiviral Particle
Symbol:	DLX5
Synonyms:	SHFM1; SHFM1D
Mammalian Cell Selection:	Puromycin
Vector:	pLenti-C-mGFP-P2A-Puro (PS100093)
Tag:	mGFP
ACCN:	NM_005221
ORF Size:	867 bp
ORF Nucleotide Sequence:	The ORF insert of this clone is exactly the same as(RC202525).
OTI Disclaimer:	The molecular sequence of this clone aligns with the gene accession number as a point of reference only. However, individual transcript sequences of the same gene can differ through naturally occurring variations (e.g. polymorphisms), each with its own valid existence. This clone is substantially in agreement with the reference, but a complete review of all prevailing variants is recommended prior to use. <a href="#">More info</a>
OTI Annotation:	This clone was engineered to express the complete ORF with an expression tag. Expression varies depending on the nature of the gene.
RefSeq:	<a href="#">NM_005221.5</a>
RefSeq Size:	1424 bp
RefSeq ORF:	870 bp
Locus ID:	1749
UniProt ID:	<a href="#">P56178</a>
Cytogenetics:	7q21.3
Domains:	homeobox
Protein Families:	ES Cell Differentiation/IPS, Transcription Factors

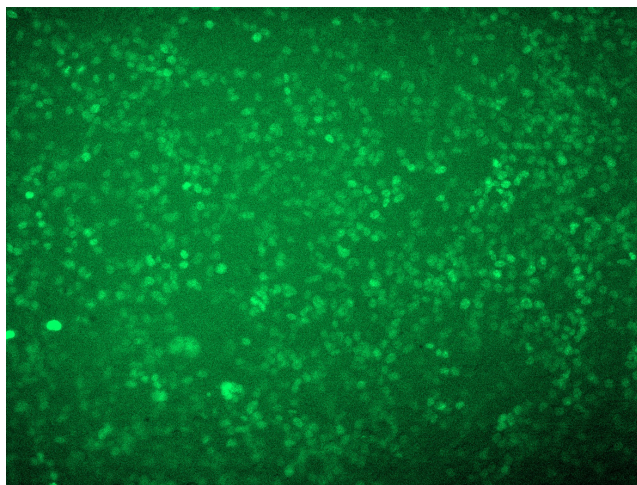


[View online »](#)

MW: 31.5 kDa

**Gene Summary:** This gene encodes a member of a homeobox transcription factor gene family similar to the *Drosophila* distal-less gene. The encoded protein may play a role in bone development and fracture healing. Mutation in this gene, which is located in a tail-to-tail configuration with another member of the family on the long arm of chromosome 7, may be associated with split-hand/split-foot malformation. [provided by RefSeq, Jul 2008]

**Product images:**



[RC202525L4] was used to prepare Lentiviral particles using [TR30037] packaging kit. HEK293T cells were transduced with RC202525L4V particle to overexpress human DLX5-mGFP fusion protein.