

Product datasheet for RC202524

PPPDE1 (DESI2) (NM_016076) Human Tagged ORF Clone

Product data:

Product Type:	Expression Plasmids
Product Name:	PPPDE1 (DESI2) (NM_016076) Human Tagged ORF Clone
Tag:	Myc-DDK
Symbol:	PPPDE1
Synonyms:	C1orf121; CGI-146; DESI; DeSI-2; DESI1; FAM152A; PNAS-4; PPPDE1
Mammalian Cell Selection:	Neomycin
Vector:	pCMV6-Entry (PS100001)
E. coli Selection:	Kanamycin (25 ug/mL)
ORF Nucleotide Sequence:	>RC202524 ORF sequence Red=Cloning site Blue=ORF Green=Tags(s)

TTTGTAAATACGACTCACTATAGGGCGGCCGGAATTCGTCGACTGGATCCGGTACCGAGGAGATCTGCC
 GCCGCGATCGCC

ATGGGGGCTAACCAGTTAGTGGTGCTCAACGTGTACGACATGTATTGGATGAACGAATATACCTCATCCA
 TTGGAATTGGAGTTTTTCATTCAAGAAATGAAGTCTATGGCAGAGAATTTGCTTATGGTGCCATCCTTA
 CCCCTTTCTGGAATATTTGAAATTTCCCAGGAAATGCTTCTGAAGTGGAGAAACATTTAAATTTAA
 GAAGCTGTTGTTTAGGGAGCACGGACTTCCTAGAAGATGATATAGAAAAATTGTAGAAGAACTGGGAA
 AAGAATACAAAGCAATGCTTATCATTTAATGCATAAAAACTGCAATCATTTTCTCAGCTTTATCAGA
 GATTCTTTGTGGGAAAGAGATTCTCGCTGGATCAATCGACTTGCCTACTTCAGCTCCTGTATACCTTT
 CTACAGAGTTGCCTCCCGAAGGAGTGGCTCACGCCCGCAGCCCTGCAGTCTAGTGTGAGCAAGAACTCC
 AGGATGAAGTGGAGGAAGCAGAGGATGCTGCCGCATCCGCTTCCGTGGCAAGCACTGCAGCAGGCTCCAG
 ACCCGGGCGCCACACTAACTA

ACGCGTACGCGGCCGCTCGAGCAGAACTCATCTCAGAAGAGGATCTGGCAGCAAATGATATCCTGGATT
 ACAAGGATGACGACGATAAGGTTTAA

Protein Sequence:	>RC202524 protein sequence Red=Cloning site Green=Tags(s)
-------------------	--

MGANQLVVLNVYDMYWMNEYTSSIGIGVFHSGIEVYGREFAYGGHPYPFSGIFEISPGNASELGETFKFK
 EAVVLGSTDFLEDDIEKIVEELGKEYKGNAYHLMHKNCNHFSSALSEILCGKEIPRWINRLAYFSSCIPF
 LQSLCPKEWLTPAALQSSVSQELQDELEEAEDAAASASVASTAAGSRPGRHTKL

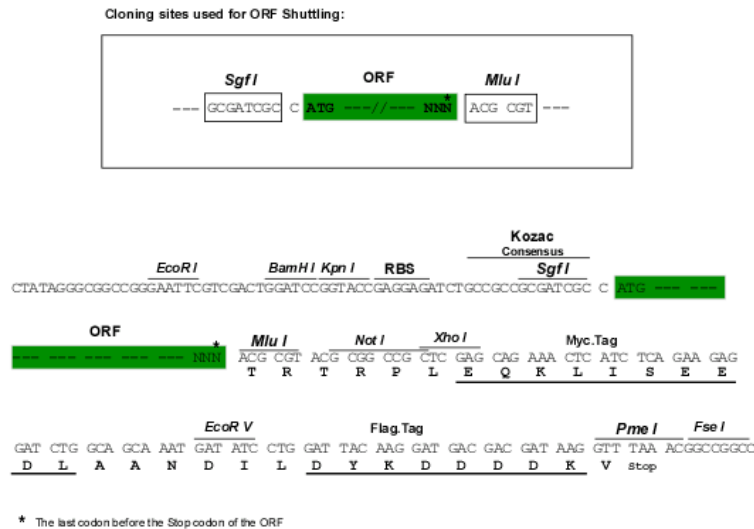
TRTRPLEQKLISEEDLAANDILDYKDDDDKV


[View online »](#)

Chromatograms: https://cdn.origene.com/chromatograms/mk6391_c12.zip

Restriction Sites: Sgfl-MluI

Cloning Scheme:



ACCN: NM_016076

ORF Size: 582 bp

OTI Disclaimer: The molecular sequence of this clone aligns with the gene accession number as a point of reference only. However, individual transcript sequences of the same gene can differ through naturally occurring variations (e.g. polymorphisms), each with its own valid existence. This clone is substantially in agreement with the reference, but a complete review of all prevailing variants is recommended prior to use. [More info](#)

OTI Annotation: This clone was engineered to express the complete ORF with an expression tag. Expression varies depending on the nature of the gene.

Components: The ORF clone is ion-exchange column purified and shipped in a 2D barcoded Matrix tube containing 10ug of transfection-ready, dried plasmid DNA (reconstitute with 100 ul of water).

Reconstitution Method:

1. Centrifuge at 5,000xg for 5min.
2. Carefully open the tube and add 100ul of sterile water to dissolve the DNA.
3. Close the tube and incubate for 10 minutes at room temperature.
4. Briefly vortex the tube and then do a quick spin (less than 5000xg) to concentrate the liquid at the bottom.
5. Store the suspended plasmid at -20°C. The DNA is stable for at least one year from date of shipping when stored at -20°C.

RefSeq: [NM_016076.5](#)

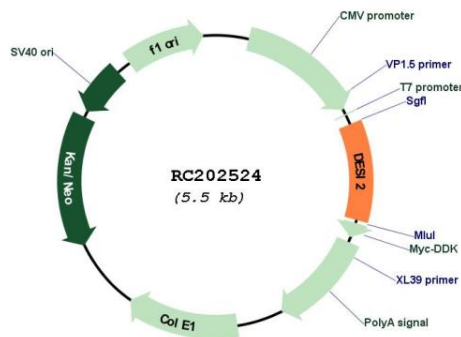
RefSeq Size: 4109 bp

RefSeq ORF: 585 bp

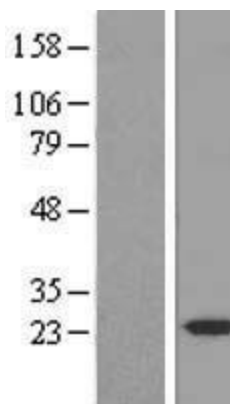
Locus ID: 51029

UniProt ID: [Q9BSY9](#)
Cytogenetics: 1q44
MW: 21.4 kDa
Gene Summary: Has deubiquitinating activity towards 'Lys-48'- and 'Lys-63'-linked polyubiquitin chains. Deubiquitinates 'Lys-48'-linked polyubiquitination of RPS7 leading to its stabilization (PubMed:28483520).[UniProtKB/Swiss-Prot Function]

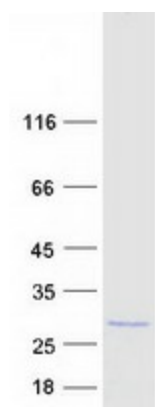
Product images:



Circular map for RC202524



Western blot validation of overexpression lysate (Cat# [LY414201]) using anti-DDK antibody (Cat# [TA50011-100]). Left: Cell lysates from untransfected HEK293T cells; Right: Cell lysates from HEK293T cells transfected with RC202524 using transfection reagent MegaTran 2.0 (Cat# [TT210002]).



Coomassie blue staining of purified DESI2 protein (Cat# [TP302524]). The protein was produced from HEK293T cells transfected with DESI2 cDNA clone (Cat# RC202524) using MegaTran 2.0 (Cat# [TT210002]).