

## Product datasheet for RC202523

### Follistatin (FST) (NM\_013409) Human Tagged ORF Clone

#### Product data:

Product Type:	Expression Plasmids
Product Name:	Follistatin (FST) (NM_013409) Human Tagged ORF Clone
Tag:	Myc-DDK
Symbol:	Follistatin
Synonyms:	FS
Mammalian Cell Selection:	Neomycin
Vector:	pCMV6-Entry (PS100001)
E. coli Selection:	Kanamycin (25 ug/mL)
ORF Nucleotide Sequence:	>RC202523 ORF sequence Red=Cloning site Blue=ORF Green=Tags(s)

TTTTGTAATACGACTCACTATAGGGCGGCCGGAATTCGTCGACTGGATCCGGTACCGAGGAGATCTGCC  
GCC**CGATCGCC**

ATGGTCCGCGGAGGCCACCGCCGGTGGGCTTTGCCTCCTGCTGCTGCTGCTGCTGCCAGTTCATGGAGG  
ACCGCAGTGCCAGGCTGGGAAGTGTGGCTCCGTCAAGCGAAGAACGGCCGCTGCCAGGTCCTGTACAA  
GACCGAAGTGAAGGAGGAGTGTGCAGCACCGCCGGCTGAGCACCTCGTGGACCGAGGAGGACGTG  
AATGACAACACACTCTTCAAGTGGATGATTTTCAACGGGGCGCCCAACTGCATCCCCTGTAAGAAA  
CGTGTGAGAACGTGGACTGTGGACCTGGGAAAAATGCCGAATGAACAAGAACAACCCCGCTGCGT  
CTGCGCCCGGATGTTCCAACATCACCTGGAAGGGTCCAGTCTGCGGGCTGGATGGGAAAACCTACCGC  
AATGAATGTGCACTCCTAAAGGCAAGATGTAAAGAGCAGCCAGAAGTCCAGTACCAAGGCAGAT  
GTAAAAAGACTTGTGGGATGTTTTCTGTCCAGGCAGCTCCACATGTGTGGTGGACCAGACCAATAATGC  
CTACTGTGTGACCTGTAATCGGATTTGCCAGAGCCTGCTTCTCTGAGCAATATCTCTGTGGGAATGAT  
GGAGTCACCTACTCCAGTGCCTGCCACCTGAGAAAAGGCTACCTGCCTGCTGGGCAGATCTATTGGATTAG  
CCTATGAGGAAAGTGTATCAAAGCAAAGTCTGTGAAGATATCCAGTGCCTGGTGGGAAAAATGTTT  
ATGGGATTTCAAGTTGGGAGAGGCCGGTGTCCCTCTGTGATGAGCTGTGCCCTGACAGTAAGTCGGAT  
GAGCCTGTCTGTCCAGTGACAATGCCACTTATGCCAGCGAGTGTCCATGAAGGAAGCTGCCTGCCTCCT  
CAGGTGTGCTACTGGAAGTAAAGCACTCCGGATCTTGCACTCCATTTGGAAGACACCGAGGAAGAGGA  
GGAAGATGAAGACCAGGACTACAGCTTTCCTATATCTTCTATTCTAGAGTGG

**ACGCGT**ACGCGGCCGCTCGAGCAGAACTCATCTCAGAAGAGGATCTGGCAGCAATGATATCCTGGATT  
ACAAGGATGACGACGATAAGGTTTAA



[View online »](#)

**Protein Sequence:** >RC202523 protein sequence  
Red=Cloning site Green=Tags(s)

MVRARHQPGGLCLLLLLLQCFMEDRSAQAGNCWLRQAKNGRCQVLYKTELSKEECCSTGRLSTSWTEEDV  
 NDNTL FKWMI FNGGAPNCIPCKETCENVDCGPGK KCRMNKNKPRVCAPDCSNI TWKGPVCGLDGKTYR  
 NECALLKARCKEQPELEVQYQGRCKKTRDVF CPGSSCTVVDQTNNAVCVTCNRICPEPASSEQYL CGND  
 GVTYSSACHLRKATCLLGRSIGLAYEGKCIKAKSCEDIQCTGGKKCLWDFK VGRGRCSL CDELCPDSKSD  
 EPVCASDNATYASECAMKEAACSSGVLLLEV KHSGCNSI SEDTEEEEEDEDDQDYSP ISSILEW

TRTRPLEQKLISEEDLAANDILDYKDDDDKV

**Chromatograms:** [https://cdn.origene.com/chromatograms/mk6216\\_e09.zip](https://cdn.origene.com/chromatograms/mk6216_e09.zip)

**Restriction Sites:** SgfI-MluI

**Cloning Scheme:**



**ACCN:** NM\_013409

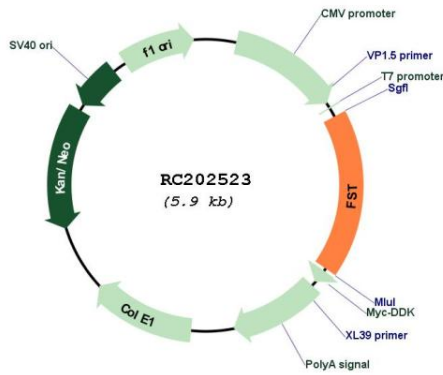
**ORF Size:** 1032 bp

**OTI Disclaimer:** Due to the inherent nature of this plasmid, standard methods to replicate additional amounts of DNA in E. coli are highly likely to result in mutations and/or rearrangements. Therefore, OriGene does not guarantee the capability to replicate this plasmid DNA. Additional amounts of DNA can be purchased from OriGene with batch-specific, full-sequence verification at a reduced cost. Please contact our customer care team at [custsupport@origene.com](mailto:custsupport@origene.com) or by calling 301.340.3188 option 3 for pricing and delivery.

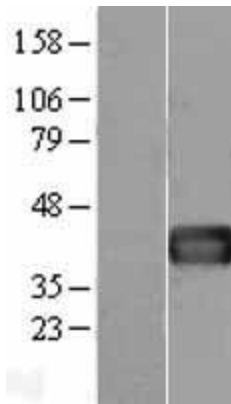
The molecular sequence of this clone aligns with the gene accession number as a point of reference only. However, individual transcript sequences of the same gene can differ through naturally occurring variations (e.g. polymorphisms), each with its own valid existence. This clone is substantially in agreement with the reference, but a complete review of all prevailing variants is recommended prior to use. [More info](#)

<b>OTI Annotation:</b>	This clone was engineered to express the complete ORF with an expression tag. Expression varies depending on the nature of the gene.
<b>Components:</b>	The ORF clone is ion-exchange column purified and shipped in a 2D barcoded Matrix tube containing 10ug of transfection-ready, dried plasmid DNA (reconstitute with 100 ul of water).
<b>Reconstitution Method:</b>	<ol style="list-style-type: none"><li>1. Centrifuge at 5,000xg for 5min.</li><li>2. Carefully open the tube and add 100ul of sterile water to dissolve the DNA.</li><li>3. Close the tube and incubate for 10 minutes at room temperature.</li><li>4. Briefly vortex the tube and then do a quick spin (less than 5000xg) to concentrate the liquid at the bottom.</li><li>5. Store the suspended plasmid at -20°C. The DNA is stable for at least one year from date of shipping when stored at -20°C.</li></ol>
<b>Note:</b>	Plasmids are not sterile. For experiments where strict sterility is required, filtration with 0.22um filter is required.
<b>RefSeq:</b>	<a href="#">NM_013409.3</a>
<b>RefSeq Size:</b>	1834 bp
<b>RefSeq ORF:</b>	1035 bp
<b>Locus ID:</b>	10468
<b>UniProt ID:</b>	<a href="#">P19883</a>
<b>Cytogenetics:</b>	5q11.2
<b>Protein Families:</b>	Druggable Genome, Secreted Protein
<b>Protein Pathways:</b>	TGF-beta signaling pathway
<b>MW:</b>	38 kDa
<b>Gene Summary:</b>	Follistatin is a single-chain gonadal protein that specifically inhibits follicle-stimulating hormone release. The single FST gene encodes two isoforms, FST317 and FST344 containing 317 and 344 amino acids respectively, resulting from alternative splicing of the precursor mRNA. In a study in which 37 candidate genes were tested for linkage and association with polycystic ovary syndrome (PCOS) or hyperandrogenemia in 150 families, evidence was found for linkage between PCOS and follistatin. [provided by RefSeq, Jul 2008]

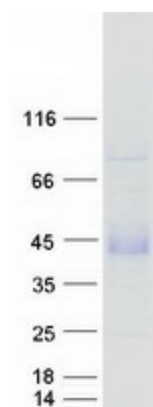
Product images:



Circular map for RC202523



Western blot validation of overexpression lysate (Cat# [LY415607]) using anti-DDK antibody (Cat# [TA50011-100]). Left: Cell lysates from untransfected HEK293T cells; Right: Cell lysates from HEK293T cells transfected with RC202523 using transfection reagent MegaTran 2.0 (Cat# [TT210002]).



Coomassie blue staining of purified FST protein (Cat# [TP302523]). The protein was produced from HEK293T cells transfected with FST cDNA clone (Cat# RC202523) using MegaTran 2.0 (Cat# [TT210002]).