

Product datasheet for RC202519

TACD2 (TACSTD2) (NM_002353) Human Tagged ORF Clone

Product data:

Product Type:	Expression Plasmids
Product Name:	TACD2 (TACSTD2) (NM_002353) Human Tagged ORF Clone
Tag:	Myc-DDK
Symbol:	TACD2
Synonyms:	EGP-1; EGP1; GA733-1; GA7331; GP50; M1S1; TROP2
Mammalian Cell Selection:	Neomycin
Vector:	pCMV6-Entry (PS100001)
E. coli Selection:	Kanamycin (25 ug/mL)
ORF Nucleotide Sequence:	>RC202519 ORF sequence Red=Cloning site Blue=ORF Green=Tags(s)

TTTTGTAATACGACTCACTATAGGGCGCCGGGAATTCGTCGACTGGATCCGGTACCGAGGAGATCTGCC
GCC**CGATCGCC**

ATGGCTCGGGGCCCCGGCCTCGCGCCGCCACCGCTGCGGCTGCCGCTGCTGCTGGTGTGGCGGCGG
TGACCGGCCACACGGCCGCGCAGGACAACCTGCACGTGTCCACCAACAAGATGACCGTGTGCAGCCCCGA
CGGCCCGGGCGCCGCTGCCAGTGCCGCGCGCTGGGCTCGGGCATGGCGTTCGACTGCTCCACGCTGACC
TCCAAGTGTCTGCTGCTCAAGGCGCGCATGAGCGCCCCAAGAACGCCCGCACGCTGGTGGCGCCGAGTG
AGCACGCGCTCGTGGACAACGATGGCCTCTACGACCCCGACTGCGACCCCGAGGGCGCTTCAAGGCGCG
CCAGTGCAACCAGACGTCGGTGTGCTGGTGCCTGAACTCGGTGGGCGTGCGCCGACGGACAAGGGCGAC
CTGAGCCTACGCTGCGATGAGCTGGTGGCACCACCATCCTCATTGACCTGCGCCACCGCCCCACCG
CCGGCGCCTTCAACCACTCAGACCTGGACGCGGAGCTGAGGCGGCTCTCCGCGAGCGCTATCGGCTGCA
CCCCAAGTTCGTGGCGCCGTGCACTACGAGCAGCCACCATCCAGATCGAGCTGCGGCAGAACACGTCT
CAGAAGGCCCGCGGTGACGTGGATATCGGCGATGCCGCTACTACTTCGAGAGGGACATCAAGGGCGAGT
CTCTATTCCAGGGCCGCGCGGCTGGACTTGCCTGCGCGGAGAACCCCTGCAGTGGAGCGCACGCT
CATCTATTACCTGGACGAGATTCCTCCGAAGTTCTCATGAAGCGCCTCACCGCCGGCCTCATCGCTGTC
ATCGTGGTGGTCTGGTGGCCCTCGTCGCCGCGCATGGCCGCTCTGGTGTATCACAACCGGAAAGTCGG
GGAAGTACAAGAAGGTGGAGATCAAGGAACCTGGGGGAGTTGAGAAAGGAACCGAGCTTG

ACGCGTACGCGGCCGCTCGAGCAGAAAACCTCATCTCAGAAGAGGATCTGGCAGCAAATGATATCCTGGATT
ACAAGGATGACGACGATAAGGTTTAA



[View online »](#)

Protein Sequence: >RC202519 protein sequence
Red=Cloning site Green=Tags(s)

MARGPGLAPPPLRLPLLLLVLAAVTGHTAAQDNCTCPTNKMTVCSPDGPGGRCQCRALGSGMAVDCSTLT
 SKCLLLKARMSAPKNARTLVRPSEHALVDNDGLYDPDCDPEGRFKARQCNQTSVCWCVNSVGVRRDTKGD
 LSLRCDELVRTHHILIDLRHRPTAGAFNHSDLDAELRRLFRERYRHPKFVAAVHYEQPTIQIELRQNTS
 QKAAGDVDIGDAAYYFERDIKGESLFQGRGGLDLRVRGEPLQVERTLIYYLDEIPPKFSMKRLTAGLIAV
 IVVVVVVALVAGMAVLVITNRRKSGKYKKEIKELGELRKEPSL

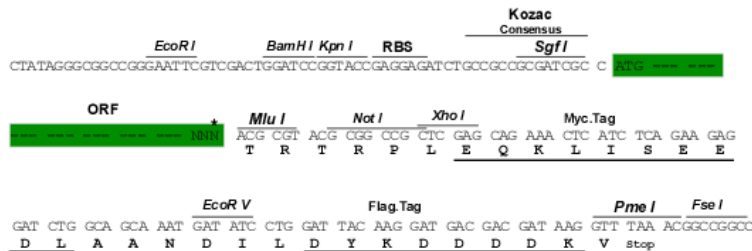
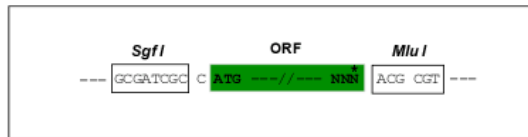
TRTRPLEQKLISEEDLAANDILDYKDDDDKV

Chromatograms: https://cdn.origene.com/chromatograms/mk6233_e06.zip

Restriction Sites: SgfI-MluI

Cloning Scheme:

Cloning sites used for ORF Shuttling:



* The last codon before the Stop codon of the ORF

ACCN: NM_002353

ORF Size: 969 bp

OTI Disclaimer: The molecular sequence of this clone aligns with the gene accession number as a point of reference only. However, individual transcript sequences of the same gene can differ through naturally occurring variations (e.g. polymorphisms), each with its own valid existence. This clone is substantially in agreement with the reference, but a complete review of all prevailing variants is recommended prior to use. [More info](#)

OTI Annotation: This clone was engineered to express the complete ORF with an expression tag. Expression varies depending on the nature of the gene.

Components: The ORF clone is ion-exchange column purified and shipped in a 2D barcoded Matrix tube containing 10ug of transfection-ready, dried plasmid DNA (reconstitute with 100 ul of water).

Reconstitution Method:

1. Centrifuge at 5,000xg for 5min.
2. Carefully open the tube and add 100ul of sterile water to dissolve the DNA.
3. Close the tube and incubate for 10 minutes at room temperature.
4. Briefly vortex the tube and then do a quick spin (less than 5000xg) to concentrate the liquid at the bottom.
5. Store the suspended plasmid at -20°C. The DNA is stable for at least one year from date of shipping when stored at -20°C.

Note: Plasmids are not sterile. For experiments where strict sterility is required, filtration with 0.22um filter is required.

RefSeq: [NM_002353.3](#)

RefSeq Size: 2080 bp

RefSeq ORF: 972 bp

Locus ID: 4070

UniProt ID: [P09758](#)

Cytogenetics: 1p32.1

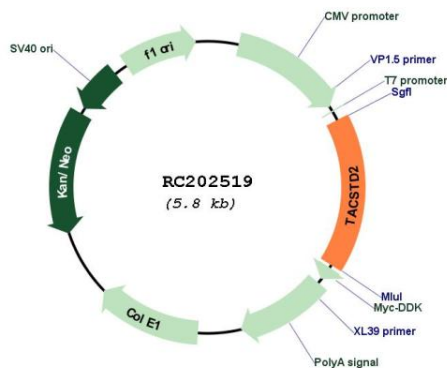
Domains: thyroglobulin_1

Protein Families: Druggable Genome, Transmembrane

MW: 35.7 kDa

Gene Summary: This intronless gene encodes a carcinoma-associated antigen. This antigen is a cell surface receptor that transduces calcium signals. Mutations of this gene have been associated with gelatinous drop-like corneal dystrophy.[provided by RefSeq, Dec 2009]

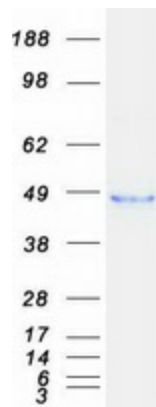
Product images:



Circular map for RC202519



Western blot validation of overexpression lysate (Cat# [LY419381]) using anti-DDK antibody (Cat# [TA592569]). Left: Cell lysates from untransfected HEK293T cells; Right: Cell lysates from HEK293T cells transfected with RC202519 using transfection reagent PEI.



Coomassie blue staining of purified TACSTD2 protein (Cat# [TP302519]). The protein was produced from HEK293T cells transfected with TACSTD2 cDNA clone (Cat# RC202519) using MegaTran 2.0 (Cat# [TT210002]).