

Product datasheet for RC202516

UBE2H (NM_003344) Human Tagged ORF Clone

Product data:

Product Type: Expression Plasmids
Product Name: UBE2H (NM_003344) Human Tagged ORF Clone
Tag: Myc-DDK
Symbol: UBE2H
Synonyms: E2-20K; GID3; UBC8; UBCH; UBCH2
Mammalian Cell Selection: Neomycin
Vector: pCMV6-Entry (PS100001)
E. coli Selection: Kanamycin (25 ug/mL)
ORF Nucleotide Sequence: >RC202516 ORF sequence
 Red=Cloning site Blue=ORF Green=Tags(s)

TTTTGTAATACGACTCACTATAGGGCGCCGGGAATTCGTCGACTGGATCCGGTACCGAGGAGATCTGCC
 GCC**CGATCGCC**

ATGTCATCTCCAGTCCGGCAAGAGGCGGATGGACACGGACGTGGTCAAGCTCATCGAGAGTAAACATG
 AGGTTACGATCCTGGGAGGACTTAATGAATTTGTAGTGAAGTTTTATGGACCACAAGGAACACCATATGA
 AGGCGGAGTATGGAAAGTTAGAGTGGACCTACCTGATAAATACCTTTCAAATCTCCATCTATAGGATTC
 ATGAATAAAATTTCCATCCCAACATTGATGAAGCGTCAGGAAGTGTGTCTAGATGTAATTAATCAA
 CTTGGACAGCTCTATGATCTTACCAATATATTTGAGTCTTCTGCCTCAGTTATTGGCCTATCCTAA
 CCCCATAGATCCTCTCAATGGTGACGCTGCAGCCATGTACCTCCACCGACCAGAAGAATACAAGCAGAAA
 ATTAAGAGTACATCCAGAAATACGCCACGGAGGAGGCGCTGAAAGAACAGGAAGAGGGTACCGGGGACA
 GCTCATCGGAGAGCTCTATGTCTGACTTTTCCGAAGATGAGGCCAGGATATGGAGTTG

ACGCGTACGCGGCCGCTCGAGCAGAACTCATCTCAGAAGAGGATCTGGCAGCAAATGATATCCTGGATT
 ACAAGGATGACGACGATAAGGTTTAA

Protein Sequence: >RC202516 protein sequence
 Red=Cloning site Green=Tags(s)

MSSPSPGKRRMDTDVVKLIESKHEVTILGGLNEFVVKFYGPQGPYEGGVWVVRVLDLDPKYPFKSPSIGF
 MNKIFHPNIDEASGTVCLDVINQWTALYDLTNIFESFLPQLLAYPNPIDPLNGDAAAMYLRPEEYKQK
 IKEYIQKYATEEALKEQEEGTGDSSSESSMSDFSEDEAQDMEL

TRTRPLEQKLISEEDLAANDILDYKDDDDKV

Chromatograms: https://cdn.origene.com/chromatograms/mk6144_f10.zip



[View online »](#)

Restriction Sites: SgfI-MluI

Cloning Scheme:



ACCN: NM_003344

ORF Size: 549 bp

OTI Disclaimer: The molecular sequence of this clone aligns with the gene accession number as a point of reference only. However, individual transcript sequences of the same gene can differ through naturally occurring variations (e.g. polymorphisms), each with its own valid existence. This clone is substantially in agreement with the reference, but a complete review of all prevailing variants is recommended prior to use. [More info](#)

OTI Annotation: This clone was engineered to express the complete ORF with an expression tag. Expression varies depending on the nature of the gene.

Components: The ORF clone is ion-exchange column purified and shipped in a 2D barcoded Matrix tube containing 10ug of transfection-ready, dried plasmid DNA (reconstitute with 100 ul of water).

Reconstitution Method:

1. Centrifuge at 5,000xg for 5min.
2. Carefully open the tube and add 100ul of sterile water to dissolve the DNA.
3. Close the tube and incubate for 10 minutes at room temperature.
4. Briefly vortex the tube and then do a quick spin (less than 5000xg) to concentrate the liquid at the bottom.
5. Store the suspended plasmid at -20°C. The DNA is stable for at least one year from date of shipping when stored at -20°C.

Note: Plasmids are not sterile. For experiments where strict sterility is required, filtration with 0.22um filter is required.

RefSeq: [NM_003344.4](#)

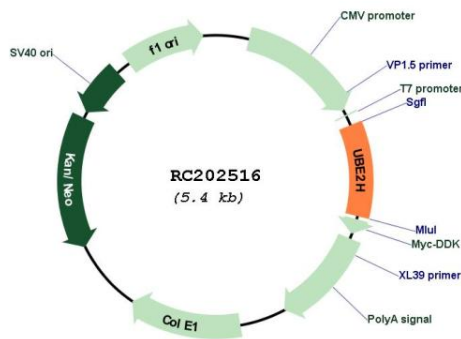
RefSeq Size: 5174 bp

RefSeq ORF: 552 bp

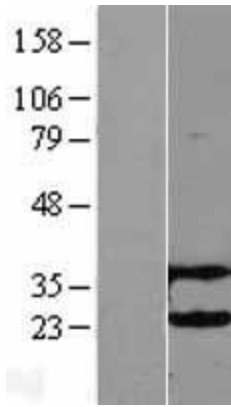
Locus ID: 7328
UniProt ID: [P62256](#)
Cytogenetics: 7q32.2
Domains: UBCc
Protein Pathways: Ubiquitin mediated proteolysis
MW: 20.7 kDa

Gene Summary: The modification of proteins with ubiquitin is an important cellular mechanism for targeting abnormal or short-lived proteins for degradation. Ubiquitination involves at least three classes of enzymes: ubiquitin-activating enzymes, or E1s, ubiquitin-conjugating enzymes, or E2s, and ubiquitin-protein ligases, or E3s. This gene encodes a member of the E2 ubiquitin-conjugating enzyme family. The encoded protein sequence is 100% identical to the mouse homolog and 98% identical to the frog and zebrafish homologs. Three alternatively spliced transcript variants have been found for this gene and they encode distinct isoforms. [provided by RefSeq, Feb 2011]

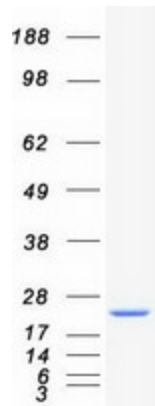
Product images:



Circular map for RC202516



Western blot validation of overexpression lysate (Cat# [LY401145]) using anti-DDK antibody (Cat# [TA50011-100]). Left: Cell lysates from untransfected HEK293T cells; Right: Cell lysates from HEK293T cells transfected with RC202516 using transfection reagent MegaTran 2.0 (Cat# [TT210002]).



Coomassie blue staining of purified UBE2H protein (Cat# [TP302516]). The protein was produced from HEK293T cells transfected with UBE2H cDNA clone (Cat# RC202516) using MegaTran 2.0 (Cat# [TT210002]).