

Product datasheet for RC202512L1

GPR172A (SLC52A2) (NM_024531) Human Tagged Lenti ORF Clone

Product data:

Product Type:	Expression Plasmids
Product Name:	GPR172A (SLC52A2) (NM_024531) Human Tagged Lenti ORF Clone
Tag:	Myc-DDK
Symbol:	GPR172A
Synonyms:	BVLS2; D15Ertld747e; GPCR41; GPR172A; hRFT3; PAR1; RFT3; RFVT2
Mammalian Cell Selection:	None
Vector:	pLenti-C-Myc-DDK (PS100064)
E. coli Selection:	Chloramphenicol (34 ug/mL)
ORF Nucleotide Sequence:	The ORF insert of this clone is exactly the same as(RC202512).
Restriction Sites:	SgfI-MluI
Cloning Scheme:	

Cloning sites used for ORF Shuttling:



* The last codon before the Stop codon of the ORF.

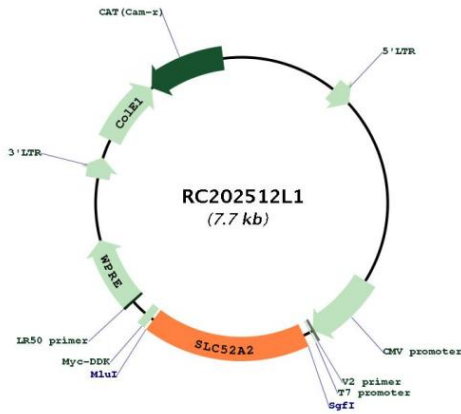
ACCN:	NM_024531
ORF Size:	1335 bp



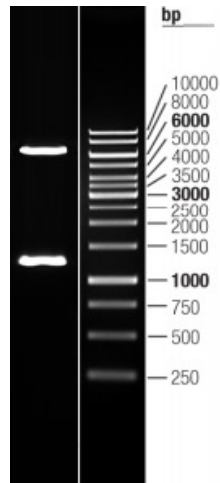
[View online »](#)

OTI Disclaimer:	The molecular sequence of this clone aligns with the gene accession number as a point of reference only. However, individual transcript sequences of the same gene can differ through naturally occurring variations (e.g. polymorphisms), each with its own valid existence. This clone is substantially in agreement with the reference, but a complete review of all prevailing variants is recommended prior to use. More info
OTI Annotation:	This clone was engineered to express the complete ORF with an expression tag. Expression varies depending on the nature of the gene.
Components:	The ORF clone is ion-exchange column purified and shipped in a 2D barcoded Matrix tube containing 10ug of transfection-ready, dried plasmid DNA (reconstitute with 100 ul of water).
Reconstitution Method:	<ol style="list-style-type: none">1. Centrifuge at 5,000xg for 5min.2. Carefully open the tube and add 100ul of sterile water to dissolve the DNA.3. Close the tube and incubate for 10 minutes at room temperature.4. Briefly vortex the tube and then do a quick spin (less than 5000xg) to concentrate the liquid at the bottom.5. Store the suspended plasmid at -20°C. The DNA is stable for at least one year from date of shipping when stored at -20°C.
RefSeq:	NM_024531.3
RefSeq Size:	1900 bp
RefSeq ORF:	1338 bp
Locus ID:	79581
UniProt ID:	Q9HAB3
Cytogenetics:	8q24.3
Protein Families:	Druggable Genome, GPCR, Transmembrane
MW:	45.8 kDa
Gene Summary:	This gene encodes a membrane protein which belongs to the riboflavin transporter family. In humans, riboflavin must be obtained by intestinal absorption because it cannot be synthesized by the body. The water-soluble vitamin riboflavin is processed to the coenzymes flavin mononucleotide (FMN) and flavin adenine dinucleotide (FAD) which then act as intermediaries in many cellular metabolic reactions. Paralogous members of the riboflavin transporter gene family are located on chromosomes 17 and 20. Unlike other members of this family, this gene has higher expression in brain tissue than small intestine. Alternative splicing of this gene results in multiple transcript variants encoding the same protein. Mutations in this gene have been associated with Brown-Vialetto-Van Laere syndrome 2 - an autosomal recessive progressive neurologic disorder characterized by deafness, bulbar dysfunction, and axial and limb hypotonia. [provided by RefSeq, Jul 2012]

Product images:



Circular map for RC202512L1



Double digestion of RC202512L1 using SgfI and MluI