

Product datasheet for **RC202500**

ADFP (PLIN2) (NM_001122) Human Tagged ORF Clone

Product data:

Product Type:	Expression Plasmids
Product Name:	ADFP (PLIN2) (NM_001122) Human Tagged ORF Clone
Tag:	Myc-DDK
Symbol:	PLIN2
Synonyms:	ADFP; ADRP
Mammalian Cell Selection:	Neomycin
Vector:	pCMV6-Entry (PS100001)
E. coli Selection:	Kanamycin (25 ug/mL)



[View online »](#)

ORF Nucleotide
Sequence:

>RC202500 representing NM_001122
Red=Cloning site Blue=ORF Green=Tags(s)

TTTTGTAATACGACTCACTATAGGGCGGCCGGAATTCGTCGACTGGATCCGGTACCGAGGAGATCTGCC
GCCGCGATCGCC

ATGGCATCCGTTGCAGTTGATCCACAACCGAGTGTGGTACTCGGGTGGTCAACCTGCCCTTGGTGAGCT
CCACGTATGACCTCATGTCTCAGCCTATCTCAGTACAAAGGACCAGTATCCCTACCTGAAGTCTGTGTG
TGAGATGGCAGAGAACGGTGTGAAGACCATCACCTCCGTGGCCATGACCAGTGCTCTGCCATCATCCAG
AAGCTAGAGCCGCAAATTGCAGTTGCCAATACCTATGCCTGTAAGGGGCTAGACAGGATTGAGGAGAGAC
TGCCTATTCTGAATCAGCCATCAACTCAGATTGTTGCCAATGCCAAAGGCGCTGTGACTGGGCAAAAGA
TGCTGTGACGACTACTGTGACTGGGGCCAAGGATTCTGTGGCCAGCAGATCACAGGGGTGATGGACAAG
ACCAAAGGGGCGAGTACTGGCAGTGTGGAGAAGACCAAGTCTGTGGTCAAGTGGCAGCATTAAACAGTCT
TGGGGAGTCGGATGATGCAGCTCGTGAGCAGTGGCGTAGAAAATGCACTACCAAATCAGAGCTGTTGGT
AGAACAGTACCTCCCTCACTGAGGAAGAACTAGAAAAAGAAGCAAAAAAGTTGAAGGATTTGATCTG
GTTCAGAAGCCAAGTTATTATGTTAGACTGGGATCCCTGTCTACCAAGCTTCACTCCCGTGCCTACCAGC
AGGCTCTCAGCAGGGTTAAGAAGCTAAGCAAAAAAGCCAACAGACCATTCTCAGCTCCATTCTACTGT
TCACCTGATTGAATTTGCCAGGAAGAATGTGTATAGTGCCAATCAGAAAATTCAGGATGCTCAGGATAAG
CTCTACCTCTCATGGGTAGAGTGGAAAAGGAGCATTGGATATGATGATACTGATGAGTCCCCTGTGCTG
AGCACATTGAGTCACGTACTCTTGCAATTGCCCGCAACCTGACTCAGCAGCTCCAGACCAGTGGCCACAC
CCTCCTGTCCAACATCCAAGGTGTACCACAGAATCCAAGATCAAGCCAAGCACATGGGGGTGATGGCA
GGCGACATCTACTCAGTGTCCGCAATGCTGCCTCCTTTAAGAAGTGTCTGACAGCCTCCTCACTTCTA
GCAAGGGGCGAGTGCAGAAAATGAAGGAATCTTTAGATGACGTGATGGATTATCTTGTTAAACAACACGCC
CCTCAACTGGCTGGTAGGTCCTTTTATCCTCAGCTGACTGAGTCTCAGAATGCTCAGGACCAAGGTGCA
GAGATGGACAAGAGCAGCCAGGAGACCCAGCGATCTGAGCATAAACTCAT

ACGCGTACGCGGCCGCTCGAGCAGAACTCATCTCAGAAGAGGATCTGGCAGCAAATGATATCCTGGATT
ACAAGGATGACGACGATAAGGTTTAA

Protein Sequence:

>RC202500 representing NM_001122
Red=Cloning site Green=Tags(s)

MASVAVDPQPSVTRVVNLPLVSSYDLMSSAYLSTKDQYPYLKSVCEMAENGVKTIITSVAMTSALPIIQ
KLEPQIAVANTYACKGLDRIEERLPILNQPSTQIVANAKGAVTGAKDAVTTTGTGAKDSVASTITGVMDK
TKGAVTGSVEKTKSVVSGSINTVLGSRMMQLVSSGVENALTKSELLVEQYPLTEEELEKEAKKVEGFDL
VQKPSYVRLGSLSTKLHSRAYQQALSRVKEAKQKSQQTISQLHSTVHLIEFARKNVYSANQKIQDAQDK
LYLSWVEWKRSIGYDDTDESHCAEHIESRTLAIARNLTQQLTTCHTLLSNIQGVQNIQDQAKHMGVMA
GDIYSVFRNAASFKEVSDSLLTSSKGQLQKMKESLDDVMDYLNNTPLNWLVGPFYPQLTESQNAQDQGA
EMDKSSQETQRSEHKTH

TRTRPLEQKLISEEDLAANDILDYKDDDDKV

Chromatograms:

https://cdn.origene.com/chromatograms/mg2697_b09.zip

Restriction Sites:

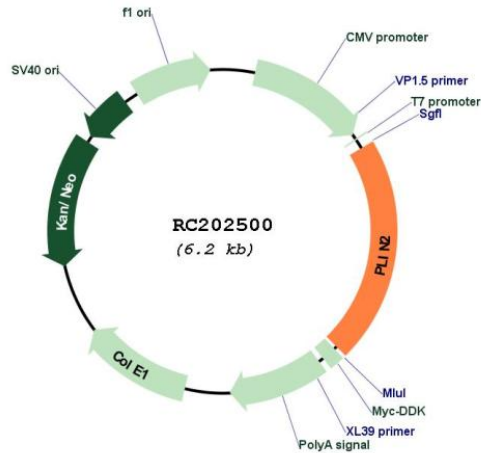
Sgfl-Mlul

Cloning Scheme:

Cloning sites used for ORF Shutting:



* The last codon before the Stop codon of the ORF

Plasmid Map:


ACCN: NM_001122

ORF Size: 1311 bp

OTI Disclaimer: The molecular sequence of this clone aligns with the gene accession number as a point of reference only. However, individual transcript sequences of the same gene can differ through naturally occurring variations (e.g. polymorphisms), each with its own valid existence. This clone is substantially in agreement with the reference, but a complete review of all prevailing variants is recommended prior to use. [More info](#)

OTI Annotation: This clone was engineered to express the complete ORF with an expression tag. Expression varies depending on the nature of the gene.

Components: The ORF clone is ion-exchange column purified and shipped in a 2D barcoded Matrix tube containing 10ug of transfection-ready, dried plasmid DNA (reconstitute with 100 ul of water).

Reconstitution Method:

1. Centrifuge at 5,000xg for 5min.
2. Carefully open the tube and add 100ul of sterile water to dissolve the DNA.
3. Close the tube and incubate for 10 minutes at room temperature.
4. Briefly vortex the tube and then do a quick spin (less than 5000xg) to concentrate the liquid at the bottom.
5. Store the suspended plasmid at -20°C. The DNA is stable for at least one year from date of shipping when stored at -20°C.

RefSeq: [NM_001122.4](#)

RefSeq Size: 2010 bp

RefSeq ORF: 1314 bp

Locus ID: 123

UniProt ID: [Q99541](#)

Cytogenetics: 9p22.1

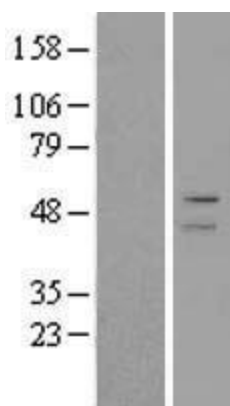
Domains: perilipin

Protein Families: Druggable Genome

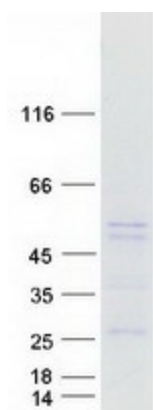
MW: 47.9 kDa

Gene Summary: The protein encoded by this gene belongs to the perilipin family, members of which coat intracellular lipid storage droplets. This protein is associated with the lipid globule surface membrane material, and maybe involved in development and maintenance of adipose tissue. However, it is not restricted to adipocytes as previously thought, but is found in a wide range of cultured cell lines, including fibroblasts, endothelial and epithelial cells, and tissues, such as lactating mammary gland, adrenal cortex, Sertoli and Leydig cells, and hepatocytes in alcoholic liver cirrhosis, suggesting that it may serve as a marker of lipid accumulation in diverse cell types and diseases. Alternatively spliced transcript variants have been found for this gene. [provided by RefSeq, Mar 2011]

Product images:



Western blot validation of overexpression lysate (Cat# [LY400454]) using anti-DDK antibody (Cat# [TA50011-100]). Left: Cell lysates from untransfected HEK293T cells; Right: Cell lysates from HEK293T cells transfected with RC202500 using transfection reagent MegaTran 2.0 (Cat# [TT210002]).



Coomassie blue staining of purified PLIN2 protein (Cat# [TP302500]). The protein was produced from HEK293T cells transfected with PLIN2 cDNA clone (Cat# RC202500) using MegaTran 2.0 (Cat# [TT210002]).