

Product datasheet for **RC202486**

EHD4 (NM_139265) Human Tagged ORF Clone

Product data:

Product Type:	Expression Plasmids
Product Name:	EHD4 (NM_139265) Human Tagged ORF Clone
Tag:	Myc-DDK
Symbol:	EHD4
Synonyms:	PAST4
Mammalian Cell Selection:	Neomycin
Vector:	pCMV6-Entry (PS100001)
E. coli Selection:	Kanamycin (25 ug/mL)



[View online »](#)

ORF Nucleotide Sequence:

>RC202486 ORF sequence
 Red=Cloning site Blue=ORF Green=Tags(s)

TTTTGTAATACGACTCACTATAGGGCGGCCGGGAATTCGTCGACTGGATCCGGTACCGAGGAGATCTGCC
 GCC**CGCATCGCC**

ATGTTTCAGCTGGATGGGGCGGCAGGCGGGCGGGCGCAACCGCTGGCGGCGGGACCGGTTGCAGACGG
 TGACGGGCGGGCTGCGCTCGCTCTACCTGCGCAAGGTGCTGCCGCTGGAGGAGGCGTACCGCTTCCACGA
 GTTCCACTCGCCTGCGCTGGAGGACGCCGACTTCGAGAACAAGCCCATGATCCTGCTGGTGGGCCAGTAC
 AGCACCAGCAAGACCACCTTCATCAGATACCTACTGGAGCAGGATTTCCAGGCATGAGGATTGGTCCGG
 AGCCACACAGACTCCTTCATCGCCGTGATGTATGGAGAGACTGAGGGCAGCACCCAGGGAATGCTTT
 AGTCGTGGACCCCAAAAAGCCGTTTAGAAAAGCTCAGTCGCTTTGGAAACGCTTTCCTGAATCGATTATG
 TGCTCACAGCTCCCAATCAGGTCCTGAAGAGCATCAGCGTCATCGACAGCCCCGGCATCCTTTCTGGGG
 AGAAGCAGCGCATCAGCCGAGGCTATGACTTCTGCCAGGTCCTGCAGTGGTTTCCGAGAGGGTGGACAG
 GATCATCTGCTCTTTGACGCTACAAGCTGGACATCTCAGATGAATTCTCAGAGGCCATCAAGGCCTTC
 CGGGGCCAGGACGACAAGATCCGTGTCGTGCTGAATAAGGCCACCAAGTGGACACGCAGCAGCTGATGC
 GGGTCTACGGGGCCCTCATGTGGTCCCTAGGCAAGGTCATCAACACGCCCCGAGGTAAGTGGCGCTCTACAT
 TGGCTCCTTCTGGGCGCAGCCCTGCAGAACACGGACAACCGCCGGCTCTTCGAGGCTGAGGCCCAGGAC
 CTCTTCAGAGACATCCAGAGCCTCCCCAGAAGGCAGCGGTGCGCAAGCTCAACGACCTCATCAAGCGAG
 CGAGGCTGGCCAAAGGTGCATGCCTACATCATCAGTACCTGAAGAAGGAGATGCCAAGTGTATTTGGAAA
 GGAAAACAAGAAGAGAGAGCTTATCAGCAGGCTACCGAAATCTACATTCAGCTACAGCGAGAATACCAG
 ATTTCTGCAGGGGACTTCCCTGAGGTCAAGGCTATGCAGGAACAGCTTGAAGAACTATGACTTCACCAAT
 TCCACTCGCTGAAGCCCAAGCTGATCGAGGCAGTGGACAACATGCTGAGCAACAAGATCTCGCCCCTCAT
 GAACCTCATCAGCCAGGAGGAGACGAGCACGCCACGCAGCTGGTGCAGGGCGGCCCTTCGATGGCACC
 ACCGAGGGCCCTTCAACCAGGGCTACGGGAGGGTGCCAAGGAGGGCGCCGACGAGGAGGAGTGGTTCG
 TGGCCAAAGACAAGCCGTCTACGACGAGCTCTTCTACACTCTGTGCCCCATCAATGGCAAGATATCAGG
 TGTCAACGCCAAGAAGGAGATGGTGACCTCAAGCTGCCCAACAGCGTCTGGGCAAGATCTGGAAGCTG
 GCCGACTGCGACTGCGACGGCATGCTTGATGAGGAGGAGTTCGCGCTGGCCAAGCACCTCATCAAGATCA
 AGCTCGACGGCTACGAGCTGCCAGCAGCCTGCCCCCCACCTCGTGCCCCCTCGCACAGGAAGTCCCT
 GCCCAAGGCCGAC

ACGCGTACGCGGCGGCTCGAGCAGAAACTCATCTCAGAAGAGGATCTGGCAGCAAATGATATCCTGGATT
 ACAAGGATGACGACGATAAGGTTTAA

Protein Sequence:

>RC202486 protein sequence
 Red=Cloning site Green=Tags(s)

MFSWMGRQAGGRERAGGADAVQTVTGGLRSLYLKRVLPLEEAYRFHEFHSPALEDADFENKPMILLVQGY
 STGKTTFIRYLLEQDFPGMRIGPEPTTDSFIAMVYGETEGSTPGNALVVDPKKPFKLSRFGNAFLNRFM
 CSQLPNQVLKISVIDSPGILSGEKQRISRGYDFCQVLQWFAERVDRIILLFDAHKLDISDEFSEAIKAF
 RGQDDKIRVVLNKADQVDTQQLMRVYGALMWSLGVINTPEVLRVYIGSFWAQPLQNTDNRRLEAEAQD
 LFRDIQSLPQKA AVRKLNDLIKRRARLAKVHAYIISYLKEMPSVFGKENKKRELISRLPEIYIQLQREYQ
 ISAGDFPEVKAMQEQL ENYDFTKFHSLKPKLIEAVDNMLSNKISPLMNLISQEETSTPTQLVQGGAFDGT
 TEGPFNQYGGEGAKEGADEEEWVAKDKPVYDEL FYTLSPINGKISGVNAKKEMVT SKLPNSVLGKIWKL
 ADCDCDGMLEEEFALAKHLIKIKLDGYELPSSLPPHLVPPSHRKS LPKAD

TRTRPLEQKLISEEDLAANDILDYKDDDDKV

Chromatograms:

https://cdn.origene.com/chromatograms/mk6206_c04.zip

Restriction Sites:

SgfI-MluI

Cloning Scheme:

ACCN: NM_139265

ORF Size: 1623 bp

OTI Disclaimer: The molecular sequence of this clone aligns with the gene accession number as a point of reference only. However, individual transcript sequences of the same gene can differ through naturally occurring variations (e.g. polymorphisms), each with its own valid existence. This clone is substantially in agreement with the reference, but a complete review of all prevailing variants is recommended prior to use. [More info](#)

OTI Annotation: This clone was engineered to express the complete ORF with an expression tag. Expression varies depending on the nature of the gene.

Components: The ORF clone is ion-exchange column purified and shipped in a 2D barcoded Matrix tube containing 10ug of transfection-ready, dried plasmid DNA (reconstitute with 100 ul of water).

- Reconstitution Method:**
1. Centrifuge at 5,000xg for 5min.
 2. Carefully open the tube and add 100ul of sterile water to dissolve the DNA.
 3. Close the tube and incubate for 10 minutes at room temperature.
 4. Briefly vortex the tube and then do a quick spin (less than 5000xg) to concentrate the liquid at the bottom.
 5. Store the suspended plasmid at -20°C. The DNA is stable for at least one year from date of shipping when stored at -20°C.

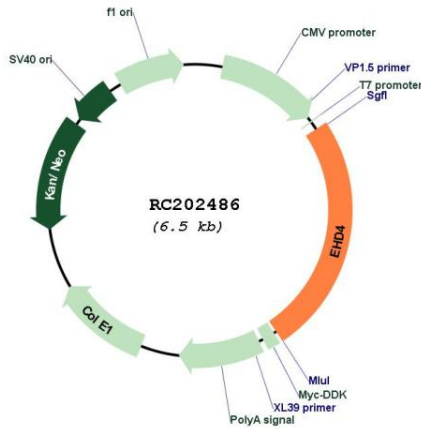
RefSeq: [NM_139265.2](#), [NP_644670.1](#)
RefSeq Size: 2904 bp

RefSeq ORF: 1626 bp

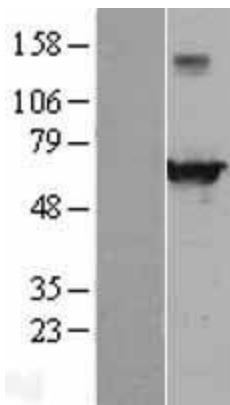
Locus ID: 30844

UniProt ID: [Q9H223](#)

Cytogenetics: 15q15.1
Domains: EH
Protein Pathways: Endocytosis
MW: 61.2 kDa
Gene Summary: ATP- and membrane-binding protein that probably controls membrane reorganization/tubulation upon ATP hydrolysis. Plays a role in early endosomal transport. [UniProtKB/Swiss-Prot Function]

Product images:


Circular map for RC202486



Western blot validation of overexpression lysate (Cat# [LY403382]) using anti-DDK antibody (Cat# [TA50011-100]). Left: Cell lysates from untransfected HEK293T cells; Right: Cell lysates from HEK293T cells transfected with RC202486 using transfection reagent MegaTran 2.0 (Cat# [TT210002]).