

Product datasheet for **RC202483**

Betacellulin (BTC) (NM_001729) Human Tagged ORF Clone

Product data:

Product Type:	Expression Plasmids
Product Name:	Betacellulin (BTC) (NM_001729) Human Tagged ORF Clone
Tag:	Myc-DDK
Symbol:	Betacellulin
Mammalian Cell Selection:	Neomycin
Vector:	pCMV6-Entry (PS100001)
E. coli Selection:	Kanamycin (25 ug/mL)
ORF Nucleotide Sequence:	>RC202483 ORF sequence Red=Cloning site Blue=ORF Green=Tags(s)

TTTTGTAATACGACTCACTATAGGGCGGCCGGAATTCGTCGACTGGATCCGGTACCGAGGAGATCTGCC
GCC**CGATCGCC**

ATGGACCGGGCCGCCGGTGCAGCGGCCAGCTCCCTGCCACTGCTCCTGGCCCTTGCCTGGGTCTAG
TGATCCTTCACTGTGTGGTGGCAGATGGGAATTCACCAGAAGTCCTGAACTAATGGCCTCCTCTGTGG
AGACCTTGAGGAAACTGTGCAGCTACCACCACACAATCAAAGCGGAAAGGCCACTTCTCTAGGTGCCCC
AAGCAATACAAGCATTACTGCATCAAAGGGAGATGCCGCTTCGTGGTGGCCGAGCAGACGCCCTCCTGTG
TCTGTGATGAAGGCTACATTGGAGCAAGGTGTGAGAGAGTTGACTTGTTTTACCTAAGAGGAGACAGAGG
ACAGATTCCTGGTATTTGTATGATAGCAGTTATGGTAGTTTTTATTATTTTGGTCATCGGTGTCTGCACA
TGCTGTACCCCTCTTCGAAACGTCGTAAGAAAGAAAGAAAGAAAGAAATGGAACTCTGGGTAAAG
ATATACTCCTATCAATGAAGATATTGAAGAGACAAATATTGCT

ACGCGTACGCGGCCGCTCGAGCAGAACTCATCTCAGAAGAGGATCTGGCAGCAAATGATATCCTGGATT
ACAAGGATGACGACGATAAGGTTTAA

Protein Sequence:	>RC202483 protein sequence Red=Cloning site Green=Tags(s)
-------------------	--

MDRAARCSGASSLP LLLALALGLVILHCVVADGNSTRSPETNGLLCGDPEENCAATTTQSKRKGFHSRCP
KQYKHYCIKGRCFVVAEQTPSCVDEGYIGARCERVDLFYLRGDRGQILVICMIAVMVFILVIGVCT
CCHPLRKRKRKKKEEMETLGKIDITPINEDIEETNIA

TRTRPLEQKLISEEDLAANDILDYKDDDDKV

Chromatograms:	https://cdn.origene.com/chromatograms/mk6054_h06.zip
Restriction Sites:	SgfI-MluI



[View online »](#)

Cloning Scheme:



ACCN: NM_001729

ORF Size: 534 bp

OTI Disclaimer: The molecular sequence of this clone aligns with the gene accession number as a point of reference only. However, individual transcript sequences of the same gene can differ through naturally occurring variations (e.g. polymorphisms), each with its own valid existence. This clone is substantially in agreement with the reference, but a complete review of all prevailing variants is recommended prior to use. [More info](#)

OTI Annotation: This clone was engineered to express the complete ORF with an expression tag. Expression varies depending on the nature of the gene.

Components: The ORF clone is ion-exchange column purified and shipped in a 2D barcoded Matrix tube containing 10ug of transfection-ready, dried plasmid DNA (reconstitute with 100 ul of water).

Reconstitution Method:

1. Centrifuge at 5,000xg for 5min.
2. Carefully open the tube and add 100ul of sterile water to dissolve the DNA.
3. Close the tube and incubate for 10 minutes at room temperature.
4. Briefly vortex the tube and then do a quick spin (less than 5000xg) to concentrate the liquid at the bottom.
5. Store the suspended plasmid at -20°C. The DNA is stable for at least one year from date of shipping when stored at -20°C.

RefSeq: [NM_001729.4](#)

RefSeq Size: 1323 bp

RefSeq ORF: 537 bp

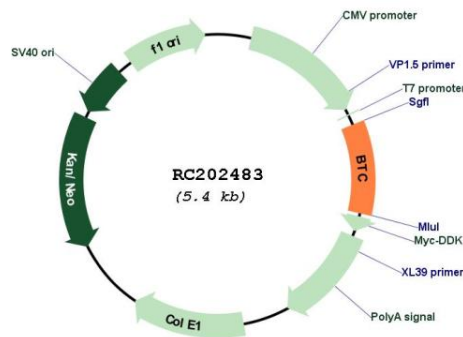
Locus ID: 685

UniProt ID: [P35070](#)

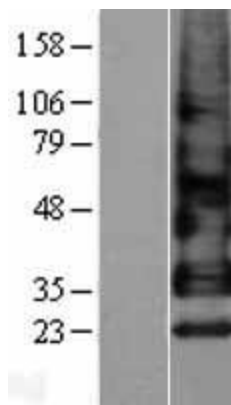
Cytogenetics: 4q13.3

Domains:	EGF
Protein Families:	Druggable Genome, ES Cell Differentiation/IPS, Secreted Protein, Transmembrane
Protein Pathways:	ErbB signaling pathway
MW:	19.8 kDa
Gene Summary:	This gene encodes a member of the epidermal growth factor (EGF) family of proteins. Alternative splicing results in multiple transcript variants, at least one of which encodes a preproprotein that is proteolytically processed to generate the secreted growth factor. A secreted form and a membrane-anchored form of this protein bind to multiple different EGF receptors. This protein promotes pancreatic cell proliferation and insulin secretion, as well as retinal vascular permeability. Mutations in this gene may be associated with type 2 diabetes in human patients. [provided by RefSeq, Nov 2015]

Product images:



Circular map for RC202483



Western blot validation of overexpression lysate (Cat# [LY400656]) using anti-DDK antibody (Cat# [TA50011-100]). Left: Cell lysates from untransfected HEK293T cells; Right: Cell lysates from HEK293T cells transfected with RC202483 using transfection reagent MegaTran 2.0 (Cat# [TT210002]).