

## Product datasheet for **RC202480**

### NDUF3 (NDUFAF3) (NM\_199074) Human Tagged ORF Clone

#### Product data:

**Product Type:** Expression Plasmids  
**Product Name:** NDUF3 (NDUFAF3) (NM\_199074) Human Tagged ORF Clone  
**Tag:** Myc-DDK  
**Symbol:** NDUF3  
**Synonyms:** 2P1; C3orf60; E3-3; MC1DN18  
**Mammalian Cell Selection:** Neomycin  
**Vector:** pCMV6-Entry (PS100001)  
**E. coli Selection:** Kanamycin (25 ug/mL)  
**ORF Nucleotide Sequence:** >RC202480 ORF sequence  
 Red=Cloning site Blue=ORF Green=Tags(s)

TTTTGTAATACGACTCACTATAGGGCGGCCGGAATTCGTCGACTGGATCCGGTACCGAGGAGATCTGCC  
 GCC**CGATCGCC**

ATGGCCACCGCTCTCGCGCTACGTAGTTGTACCGAGCGCGACCCTCGCTGCGCTGTCCGCCGTTGAGC  
 TTCCCTGGGCCCGCGGCGAGGGCATCGGCTCTCGCCGGCGGATGACGAGCTGTATCAGCGGACGCGCAT  
 CTCTCTGTGCAACGCGAGGCCGCTCAGGCAATGTACATCGACAGCTACAACAGCCGCGGCTTCATGATA  
 AACGGAACCGCGTGCTCGGCCCTGCGCTCTGCTCCGCACTCGGTGGTGCAGTGAACGTGGGATCCC  
 ACCAGGACATCACCGAAGACAGCTTTCCCTCTTCTGGTTGCTGGAGCCCGGATAGAGATCGTGGTGGT  
 GGGGACTGGAGACCGGACCGAGAGGCTGCAGTCCAGGTGCTCAAGCCATGAGGACGCGGGCATTGCT  
 GTGGAAGTGCAGGACACGCCAATGCCTGTGCCACCTCAACTTCTGTGTATGAAGGCCGAGTAACTG  
 GAGCTGCTCTCATCCCTCCACCAGGAGGACTTCACTTACATCTTTGGCCAAGCTGCTCAA

**ACGCGT**ACGCGGCCGCTCGAGCAGAACTCATCTCAGAAGAGGATCTGGCAGCAAATGATATCCTGGATT  
 ACAAGGATGACGACGATAAGGTTTAA

**Protein Sequence:** >RC202480 protein sequence  
 Red=Cloning site Green=Tags(s)

MATALALRSLYRARPSLRCPVLPWAPRRGHRLSPADDELYQRTRISLLQREAAQAMYIDSYNSRGMFI  
 NGRNVLGPCALLPHSVVQWNVGSHQDITEDSFSLFWLLEPRIIEIVVVGTDGDRTERLQSQVLQAMRQRGIA  
 VEVQDTPNACATFNFLCHEGRVTGAALIPPPGGTSLTSLGQAAQ

**TRTRPLEQKLISEEDLAANDILDYKDDDDKV**

**Chromatograms:** [https://cdn.origene.com/chromatograms/mk6381\\_f05.zip](https://cdn.origene.com/chromatograms/mk6381_f05.zip)



[View online »](#)

Restriction Sites: SgfI-MluI

Cloning Scheme:



ACCN: NM\_199074

ORF Size: 555 bp

OTI Disclaimer: The molecular sequence of this clone aligns with the gene accession number as a point of reference only. However, individual transcript sequences of the same gene can differ through naturally occurring variations (e.g. polymorphisms), each with its own valid existence. This clone is substantially in agreement with the reference, but a complete review of all prevailing variants is recommended prior to use. [More info](#)

OTI Annotation: This clone was engineered to express the complete ORF with an expression tag. Expression varies depending on the nature of the gene.

Components: The ORF clone is ion-exchange column purified and shipped in a 2D barcoded Matrix tube containing 10ug of transfection-ready, dried plasmid DNA (reconstitute with 100 ul of water).

Reconstitution Method:

1. Centrifuge at 5,000xg for 5min.
2. Carefully open the tube and add 100ul of sterile water to dissolve the DNA.
3. Close the tube and incubate for 10 minutes at room temperature.
4. Briefly vortex the tube and then do a quick spin (less than 5000xg) to concentrate the liquid at the bottom.
5. Store the suspended plasmid at -20°C. The DNA is stable for at least one year from date of shipping when stored at -20°C.

RefSeq Size: 902 bp

RefSeq ORF: 384 bp

Locus ID: 25915

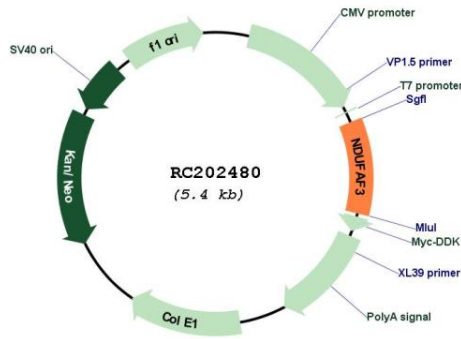
Cytogenetics: 3p21.31

MW: 20.4 kDa

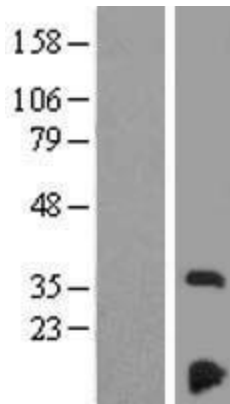
**Gene Summary:**

This gene encodes a mitochondrial complex I assembly protein that interacts with complex I subunits. Mutations in this gene cause mitochondrial complex I deficiency, a fatal neonatal disorder of the oxidative phosphorylation system. Alternatively spliced transcript variants encoding different isoforms have been identified. [provided by RefSeq, Jul 2009]

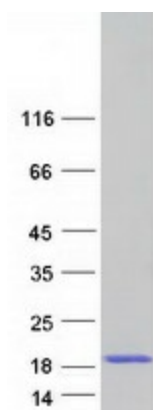
**Product images:**



Circular map for RC202480



Western blot validation of overexpression lysate (Cat# [LY404732]) using anti-DDK antibody (Cat# [TA50011-100]). Left: Cell lysates from untransfected HEK293T cells; Right: Cell lysates from HEK293T cells transfected with [RC217754] using transfection reagent MegaTran 2.0 (Cat# [TT210002]).



Coomassie blue staining of purified NDUF3 protein (Cat# [TP302480]). The protein was produced from HEK293T cells transfected with NDUF3 cDNA clone (Cat# RC202480) using MegaTran 2.0 (Cat# [TT210002]).