

Product datasheet for RC202477

TTF1 (NKX2-1) (NM_001079668) Human Tagged ORF Clone

Product data:

Product Type:	Expression Plasmids
Product Name:	TTF1 (NKX2-1) (NM_001079668) Human Tagged ORF Clone
Tag:	Myc-DDK
Symbol:	TTF1
Synonyms:	BCH; BHC; NK-2; NKX2.1; NKX2A; NMTC1; T/EBP; TEBP; TITF1; TTF-1; TTF1
Mammalian Cell Selection:	Neomycin
Vector:	pCMV6-Entry (PS100001)
E. coli Selection:	Kanamycin (25 ug/mL)
ORF Nucleotide Sequence:	>RC202477 representing NM_001079668. Blue=ORF Red=Cloning site Green=Tag(s)

```
GCTCGTTTAGTGAACCGTCAGAATTTTGTAAACGACTACTATAGGGCGCCGGGAATTCGTCGACTG
GATCCGGTACCGAGGAGATCTGCCGCCGCGATCGCC
ATGTGGTCCGGAGGCAGTGGGAAGGCGCGGGGCTGGGAGGCCGCGGGGAGGGAGGAGCAGCCCGGC
AGGCTCAGCCGCCCGGAATCATGTGATGAGTCCAAAGCACACGACTCCGTTCTCAGTGTCTGACATC
TTGAGTCCCTGGAGGAAAGCTACAAGAAAGTGGGCATGGAGGGCGCGCCCTCGGGCTCCGCTGGCG
GCGTACAGGCAGGGCCAGGCGGCACCGCAACAGCGGCCATGCAGCAGCACGCCGTGGGGCACCACGGC
GCCGTACCGCCCTACCACATGACGGCGCGGGGTGCCCCAGCTCTCGCACTCCGCCGTGGGGGGC
TACTGCAACGGCAACCTGGCAACATGAGCGAGCTGCCCGTACCAGGACACCATGAGGAACAGCGCC
TCTGGCCCCGGATGGTACGGCGCAACCCAGACCCGCGCTTCCCCGCCATCTCCCGTTCATGGGCCCG
GCGAGCGGCATGAACATGAGCGGCATGGCGGCCCTGGGCTCGCTGGGGGACGTGAGCAAGAACATGGCC
CCGCTGCCAAGCGCGCCGCGCAGGAAGCGCCGGGTGCTTCTCGCAGGCGCAGGTGTACGAGCTGGAG
CGACGCTTCAAGCAACAGAAGTACCTGTGCGCGCCGGAGCGCGAGCACCTGGCCAGCATGATCCACCTG
ACGCCCACGCAGGTCAAGATCTGGTCCAGAACCACCGCTACAAAATGAAGCGCCAGGCCAAGGACAAG
GCGGCGCAGCAGCAACTGCAGCAGGACAGCGCGCGGGGGCGGGGGGCGGGGGCACCAGGTTGCCCGCAG
CAGCAACAGGCTCAGCAGCAGTCCCGCGACGCGTGGCGGTGCCGGTCTTGGTGAAGACGGCAAACCG
TGCCAGGCGGGTCCCCCGCGGGCGCCGCGCCAGCCTACAAGGCCACGCGCAGCAGCGCCGAGCAGC
CAGGCGCAGGCCGCGCAGGCGGGCGGCGAGCGCCATCTCCGTGGGACGCGTGGCGCCGGCTTGGCGCA
CACCCGGGCCACCAGCCAGGCGAGCGCAGGCCAGTCTCCGACCTGGCGCACCCAGCCGCCAGCCCCGCG
GCGCTGCAGGGCCAGGTATCCAGCCTGTCCACCTGAACTCCTCGGGCTCGGACTACGGCACCATGTCC
TGCTCCACCTTGCTATACGGTCCGACCTGG
AGCGGACCGACGCGTACGCGGCCGCTCGAGCAGAACTCATCTCAGAAGAGGATCTGGCAGCAAATGAT
ATCCTGGATTACAAGGATGACGACGATAAGGTTTAA
```



[View online »](#)

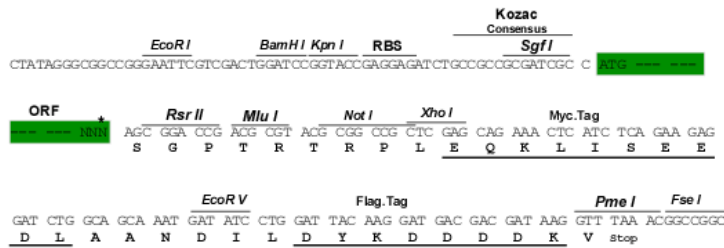
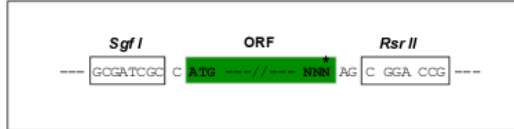
Protein Sequence: >Peptide sequence encoded by RC202477
 Blue=ORF Red=Cloning site Green=Tag(s)

MWSGGSGKARGWEAAAGGRSSPGRLSRRRIMSMPKHTTPFSVSDILSPLEESYKKVGMEGGGLGAPLA
 AYRQGQAAPPTAAMQQHAVGHHGAVTAA YHMTAAGVPQLSHSAVGGYCNGNLGNMSELPYQDTMRNSA
 SGPGWYGANPDRFPAPAI SRFMGPASGMNMSGMGLGSLGDVSKNMAPLPSAPRRKRRVLF SQAQVYELE
 RRFKQKYL SAPEREHLASMIHL TPTQVKIWFQNHRYKMKRQAKDKAAQQQLQQDSGGGGGGGTGCPQ
 QQQAQQQSPRRVAVPVLVKDGP CQAGAPAGAASLQGHAAQQAQHQAAQAAAAAISVSGGGAGLGA
 HPGHQPGSAGQSPDLAHHAASPAALQGGVSSLSHLNSSGSDYGTMSCSTLLYGRTW
 SGPTRTRPLEQKLI SEEDLAANDILDYKDDDDKV

Restriction Sites: SgfI-RsrII

Cloning Scheme:

Cloning sites used for ORF Shutting:



* The last codon before the Stop codon of the ORF

ACCN: NM_001079668

ORF Size: 1203 bp

OTI Disclaimer: The molecular sequence of this clone aligns with the gene accession number as a point of reference only. However, individual transcript sequences of the same gene can differ through naturally occurring variations (e.g. polymorphisms), each with its own valid existence. This clone is substantially in agreement with the reference, but a complete review of all prevailing variants is recommended prior to use. [More info](#)

OTI Annotation: This clone was engineered to express the complete ORF with an expression tag. Expression varies depending on the nature of the gene.

Components: The ORF clone is ion-exchange column purified and shipped in a 2D barcoded Matrix tube containing 10ug of transfection-ready, dried plasmid DNA (reconstitute with 100 ul of water).

Reconstitution Method:

1. Centrifuge at 5,000xg for 5min.
2. Carefully open the tube and add 100ul of sterile water to dissolve the DNA.
3. Close the tube and incubate for 10 minutes at room temperature.
4. Briefly vortex the tube and then do a quick spin (less than 5000xg) to concentrate the liquid at the bottom.
5. Store the suspended plasmid at -20°C. The DNA is stable for at least one year from date of shipping when stored at -20°C.

RefSeq: [NM_001079668.3](#)

RefSeq Size: 2197 bp

RefSeq ORF: 1206 bp

Locus ID: 7080

UniProt ID: [P43699](#)

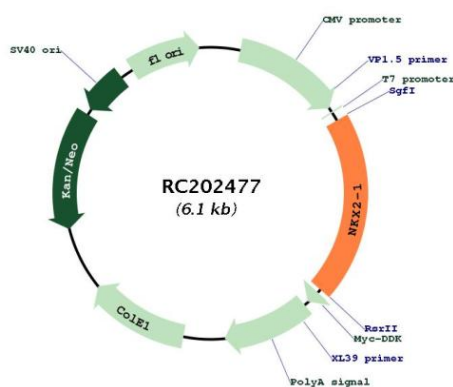
Cytogenetics: 14q13.3

Protein Families: Druggable Genome, ES Cell Differentiation/IPS, Transcription Factors

MW: 41.7 kDa

Gene Summary: This gene encodes a protein initially identified as a thyroid-specific transcription factor. The encoded protein binds to the thyroglobulin promoter and regulates the expression of thyroid-specific genes but has also been shown to regulate the expression of genes involved in morphogenesis. Mutations and deletions in this gene are associated with benign hereditary chorea, choreoathetosis, congenital hypothyroidism, and neonatal respiratory distress, and may be associated with thyroid cancer. Multiple transcript variants encoding different isoforms have been found for this gene. This gene shares the symbol/alias 'TTF1' with another gene, transcription termination factor 1, which plays a role in ribosomal gene transcription. [provided by RefSeq, Feb 2014]

Product images:



Circular map for RC202477