

Product datasheet for **RC202474**

TLE2 (NM_003260) Human Tagged ORF Clone

Product data:

Product Type:	Expression Plasmids
Product Name:	TLE2 (NM_003260) Human Tagged ORF Clone
Tag:	Myc-DDK
Symbol:	TLE2
Synonyms:	ESG; ESG2; GRG2
Mammalian Cell Selection:	Neomycin
Vector:	pCMV6-Entry (PS100001)
E. coli Selection:	Kanamycin (25 ug/mL)



[View online »](#)

**ORF Nucleotide
Sequence:**

>RC202474 ORF sequence
 Red=Cloning site Blue=ORF Green=Tags(s)

TTTTGTAATACGACTCACTATAGGGCGGCCGGGAATTCGTCGACTGGATCCGGTACCGAGGAGATCTGCC
 GCC**CGGATCGCC**

ATGTACCCCCAGGGAAGGCACCCGACCCCGCTCCAGTCCGGCCAGCCCTCAAGTCTCGATCTTGGAGA
 TCTGCGACCGCATCAAAGAAGAATTCCAGTTTCTTCAGGCTCAATACCACAGCCTCAAGCTAGAATGTGA
 GAAGCTGGCCAGCGAGAAGACGGAAATGCAGCGACATTATGTCATGTATTATGAGATGTCGTACGGGCTC
 AACATTGAAATGCATAAGCAGGCGGAGATTGTGAAGCGTCTGAGCGGTATCTGCGCTCAGATTATCCCT
 TCCTGACCCAGGAGCATCAGCAGCAGGTGCTCCAGGCCGTAGAACCGCCAAAGCAGGTACCGTGGGGGA
 GCTGAACAGCCTCATCGGGCAGCAGCTCCAGCCGCTGTCCACCACGCACCCCTGTGCCCTCACCC
 CGCCAGCCGGGCTGGTGGGCGGCAGTGTACGGGCTGCTTGTCTGTCTGGAGCCCTGGCTGCCAGG
 CTCAGCTGGCGGGCTGTCAAGGAGGACCGTGGGGCGTGGAGGCCGAGGGTCCAGAGTGGAGAGAGC
 CCCGAGCAGGAGTGCATCTCCCTCGCCCTGAGAGTCTCGTGGAGGAGGAGCGACCGAGTGGCCCTGGT
 GGTGGCGGGAAGCAGAGAGCAGATGAGAAGGAGCCATCAGGACCTTATGAAAGCGACGAAGACAAGAGTG
 ATTACAATCTGGTGGTGGACGAGGACCAACCCTCAGAGCCCCCAGCCCGCTACCAACCCCTGCGGAAA
 GGTACCCATCTGCATTCTGCCCCGTCGGGACCTGGTGGACAGTCCAGCCTCCTTGGCCTCTAGCCTTGGC
 TCACCGCTGCCTAGAGCCAAGGAGCTCATCCTGAATGACCTTCCCAGCAGCACTCCTGCCTCAAATCCT
 GTGACTCCTCCCCGCCCAGGACGCTTCCACCCCGGGCCAGCTCGGCCAGTCACTCTGCCAGTTGC
 TGCCAAGCCAGCACCTTCCACGGACAGCGTCCGCTGAGGAGCCCCCTGACTCTGTCCAGTCCCTTACC
 ACGTCTTCAGCCTGGGCTCCCACAGCACTCTCAACGGAGACCTCTCCGTGCCAGCTCCTACGTCAGCC
 TCCACCTGTCCCCCAGGTGAGCAGCTCTGTGGTGTACGGAGCCTCCCCGTGATGGCATTGAGTCTCA
 TCCCCATCTCCGAGGGTCACTCCGTCTTCTCCTCCCTACCCAGCATCCCTGGGGGAAAGCCGGCCTACTCC
 TTCACAGTGTCTGCGGACGGGCAGATGCAGCCGTTCCCTTCCCCTCGGATGCACTGGTAGGCGGGCA
 TCCCGCGGCACGCCCGCAGCTGCACACGCTGGCCATGGCGAGGTGGTCTGCGCGGTACCATCAGCGG
 CTCCACACAGCATGTGTACACGGGCGGCAAGGGCTGTGTGAAGGTGTGGGACGTGGGCCAGCCTGGGGC
 AAGACGCCCGTGGCCAGCTCGACTGCCTGAACCGAGACAACACATTTCGTTCTGCAAGTTGCTGCCGG
 ATGGCCGAGTCTGATCGTGGGCGGTGAGGCCAGCACCTTGTCCATTTGGGACCTGGCGGCGCCACCCC
 CCGTATCAAGGCCGAGCTGACTTCTCAGCCCCAGCCTGCTACGCCCTGGCCGTAGCCCGACGCCAAG
 GTTTGCTTCTCCTGCTGCAGCGATGGCAACATTGTGGTCTGGGACCTGCAGAATCAGACTATGGTCAGGC
 AGTTCAGGGCCACCGACGGCGCCAGCTGCATTGATATTTCCGATTACGGCACTCGGCTCTGGACAGG
 GGGCTGGACAACACGGTGCCTGCTGGGACCTGCGGGAGGGCCGCCAGCTGCAGCAGCATGACTTCAGC
 TCCCAGATTTTCTCCCTGGGCACTGCCCTAACCCAGGACTGGCTGGCGGTGCGAATGGAGAGTAGCAACG
 TGGAGATCCTGCACGTCCGAAGCCGGAGAAAATACCAGCTGCACCTCCACGAGAGCTGCGTGTCTCCCT
 GAAGTTTGCTCCTGCGGACGGTGGTTTGTGAGCACCGGGAAGGACAACCTGCTCAACGCCTGGAGGACG
 CCGTACGGGGCCAGCATTTTCCAGTCCAAGGAGTCGTCTCAGTCCTGAGTTGTGACATCTCCAGAAATA
 ACAAATACATCGTGACAGGCTCGGGGACAAGAAGGCCACCGTGTATGAGGTGGTCTAC

ACGCGTACGCGGCCGCTCGAGCAGAAACTCATCTCAGAAGAGGATCTGGCAGCAAATGATATCCTGGATT
 ACAAGGATGACGACGATAAGGTTTAA

Protein Sequence: >RC202474 protein sequence
 Red=Cloning site Green=Tags(s)

MYPQGRHPTPLQSGQPFKFSILEICDRIKEEFQFLQAQYHSLKLECEKLA SEKTEMQRHYVMYE MSYGL
 NIEMHKQAEIVKRLSGICAQIIPFLTQEHQQVQLQAVERAKQVTGELNSLIGQQQLPLSHHAPPVPLTP
 RPAGLVGGSATGLLLALSGALAAQAQLAAAVKEDRAGVEAEGSRVERAPSRASPSPPESLVEEERP
 SGGKQRADEKEPSGYPYSEDEKSDYNL VVDEDQPSEPPSPATTPCGKVPICIPARRDLVDS
 PASLASSLG SPLPRAKELILNDLPASTPASKSCDSSPPQDASTPGPSSASHLCQLAAKPAPSTDS
 VALRSPLTLSSPFT TSFSLGSHSTLNGDLSVPSSYVSLHLSQVSSSVYGRSPVMAFESHPLRGS
 SVSSSLPSIPGGKPAYS FHVSADGMQPVFPFSDALVGAGIPRHARQLHTLAHGEVVC
 AVTISGSTQHVTGGKGCVKVWDVGPQGA KTPVAQLDCLNRDNYIRSCKLLPDGRSLIVGGE
 ASTLSIWDLAAPTPIKAELTSSAPACYALAVSPDAK VCFSCSDGNIVWDLQNTMVRQFQ
 GHTDGASCIDI SDYGTRLWTGGLDNTVRCWDLREGRQLQQHDFS SQIFSLGHCPNQD
 WLVAGMESSNVEILHVRKPEKYQLHLHESCVLSLKFASCGRWFVSTGKDNLLNAWRT
 PYGASIFQSKESSVLSCDISRNNKYIVTGS GDKKATVYEVVY

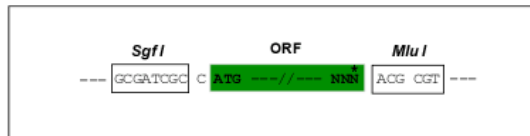
TRTRPLEQKLI SEEDLAANDILDYKDDDDKV

Chromatograms: https://cdn.origene.com/chromatograms/mk6156_f08.zip

Restriction Sites: SgfI-MluI

Cloning Scheme:

Cloning sites used for ORF Shuttling:



* The last codon before the Stop codon of the ORF

ACCN: NM_003260

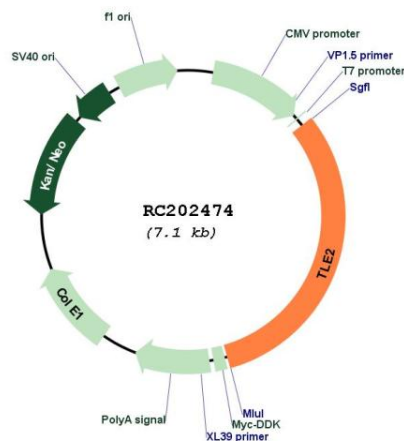
ORF Size: 2229 bp

OTI Disclaimer: The molecular sequence of this clone aligns with the gene accession number as a point of reference only. However, individual transcript sequences of the same gene can differ through naturally occurring variations (e.g. polymorphisms), each with its own valid existence. This clone is substantially in agreement with the reference, but a complete review of all prevailing variants is recommended prior to use. [More info](#)

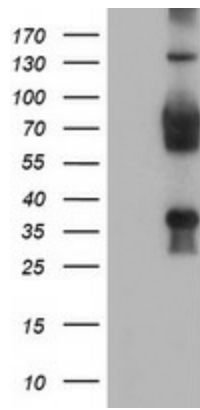
OTI Annotation: This clone was engineered to express the complete ORF with an expression tag. Expression varies depending on the nature of the gene.

Components:	The ORF clone is ion-exchange column purified and shipped in a 2D barcoded Matrix tube containing 10ug of transfection-ready, dried plasmid DNA (reconstitute with 100 ul of water).
Reconstitution Method:	<ol style="list-style-type: none"> 1. Centrifuge at 5,000xg for 5min. 2. Carefully open the tube and add 100ul of sterile water to dissolve the DNA. 3. Close the tube and incubate for 10 minutes at room temperature. 4. Briefly vortex the tube and then do a quick spin (less than 5000xg) to concentrate the liquid at the bottom. 5. Store the suspended plasmid at -20°C. The DNA is stable for at least one year from date of shipping when stored at -20°C.
RefSeq:	<u>NM_003260.5</u>
RefSeq Size:	2722 bp
RefSeq ORF:	2232 bp
Locus ID:	7089
UniProt ID:	<u>Q04725</u>
Cytogenetics:	19p13.3
Domains:	WD40, TLE_N
Protein Families:	Transcription Factors
MW:	79.8 kDa
Gene Summary:	Transcriptional corepressor that binds to a number of transcription factors. Inhibits the transcriptional activation mediated by CTNNB1 and TCF family members in Wnt signaling. The effects of full-length TLE family members may be modulated by association with dominant-negative AES (By similarity).[UniProtKB/Swiss-Prot Function]

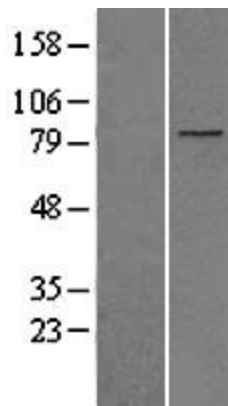
Product images:



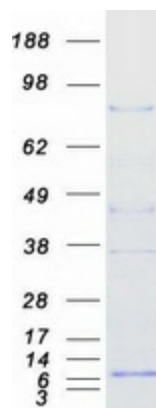
Circular map for RC202474



HEK293T cells were transfected with the pCMV6-ENTRY control (Cat# [PS100001], Left lane) or pCMV6-ENTRY TLE2 (Cat# RC202474, Right lane) cDNA for 48 hrs and lysed. Equivalent amounts of cell lysates (5 ug per lane) were separated by SDS-PAGE and immunoblotted with anti-TLE2 (Cat# [TA504240]). Positive lysates [LY401124] (100ug) and [LC401124] (20ug) can be purchased separately from OriGene.



Western blot validation of overexpression lysate (Cat# [LY401124]) using anti-DDK antibody (Cat# [TA50011-100]). Left: Cell lysates from untransfected HEK293T cells; Right: Cell lysates from HEK293T cells transfected with RC202474 using transfection reagent MegaTran 2.0 (Cat# [TT210002]).



Coomassie blue staining of purified TLE2 protein (Cat# [TP302474]). The protein was produced from HEK293T cells transfected with TLE2 cDNA clone (Cat# RC202474) using MegaTran 2.0 (Cat# [TT210002]).