

## Product datasheet for **RC202464**

### **GRK6 (NM\_001004106) Human Tagged ORF Clone**

#### **Product data:**

Product Type:	Expression Plasmids
Product Name:	GRK6 (NM_001004106) Human Tagged ORF Clone
Tag:	Myc-DDK
Symbol:	GRK6
Synonyms:	GPRK6
Mammalian Cell Selection:	Neomycin
Vector:	pCMV6-Entry (PS100001)
E. coli Selection:	Kanamycin (25 ug/mL)



[View online »](#)

**ORF Nucleotide Sequence:**

>RC202464 representing NM\_001004106  
 Red=Cloning site Blue=ORF Green=Tags(s)

TTTTGTAATACGACTCACTATAGGGCGGCCGGAATTCGTCGACTGGATCCGGTACCGAGGAGATCTGCC  
 GCC**GCGATCGCC**

ATGGAGCTCGAGAACATCGTAGCGAACACGGTGTACTCAAGGCCCGGAAGGTGGCGGTGAAATCGCA  
 AAGGCAAAAGCAAGAAATGGCGGCAGATGCTCCAGTTCCTCACATCAGCCAGTGCGAAGAGCTGCGGCT  
 CAGCCTCGAGCGTACTATCACAGCCTGTGCGAGCGGCAGCCATTGGGCGCCTGCTGTTCCGAGAGTTC  
 TGTGCCACGAGGCCGAGCTGAGCCGCTGCGTCGCCTTCTGGATGGGTGGCCGAGTATGAAGTACC  
 CGGATGACAAGCGGAAGGCATGTGGCGGCAGCTAACGCAGAATTTCTGAGCCACACGGGTCTGACCT  
 CATCCCTGAGGTCCCCGGCAGCTGGTACGAACGCACCCAGCGGTGGAGCAGGTCCCTGCAAAGAC  
 CTTTTCCAGGAACACCCGGCTGACCCACGAGTACCTGAGCGTGGCCCTTTTGCCGACTACCTCGACA  
 GCATCTACTTCAACCGTTTCTGCACTGGAAGTGGCTGAAAGGCAGCCAGTGACAAAAACACCTTCAG  
 GCAATACCGAGTCTGGCAAAGGTGGCTTTGGGAGGTGTGCGCCTGCCAGGTGCGGGCCACAGGTAAG  
 ATGTATGCCTGCAAGAAGCTAGAGAAAAAGCGGATCAAGAAGCGGAAAGGGGAGGCCATGGCGCTGAACG  
 AGAAGCAGATCCTGGAGAAAGTGAACAGTAGGTTTGTAGTGAGCTTGGCCTACGCCTATGAGACCAAGGA  
 CGCGCTGTGCCTGGTGTGACTGATGAACGGGGGCACCTCAAGTTCACATCTACCACATGGGCCAG  
 GCTGGCTTCCCGAAGCGCGGGCCGTCTTCTACGCCGCCGAGATCTGCTGTGGCCTGGAGGACCTGCACC  
 GGGAGCGCATCGTGTACAGGGACCTGAAGCCCGAGAACATCTTGTGGATGACCACGGCCACATCCGCAT  
 CTCTGACCTGGGACTAGCTGTGCATGTGCCGAGGGCCAGACCATCAAAGGGCGTGTGGGACCGTGGGT  
 TACATGGCTCCGGAGGTGGTGAAGAATGAACGGTACACGTTACGCCCTGACTGGTGGGCGCTCGGCTGCC  
 TCCTGTACGAGATGATCGCAGGCCAGTCGCCCTCCAGCAGAGGAAGAAGAAGATCAAGCGGGAGGAGGT  
 GGAGCGGCTGGTGAAGGAGGTCCCCGAGGAGTATTCAGCGCCTTTTCCCGCAGGCCCGCTCACTTTC  
 TCACAGCTCCTCTGCAAGGACCTGCCGAACGCCTGGGTGTGCTGGGGCAGTGCCCGGAGGTGAAGG  
 AGCACCCCTCTTAAAGAAGCTGAACCTCAAGCGGCTGGGAGCTGGCATGCTGGAGCCGCCGTTCAAGCC  
 TGACCCCCAGGCCATTTACTGCAAGGATGTTCTGGACATTGAACAGTTCTCTACGGTCAAGGGCGTGGAG  
 CTGGAGCCTACCGACCAGGACTTCTACCAGAAGTTTGCCACAGGCAGTGTGCCATCCCCGGCAGAACG  
 AGATGGTGGAGACCGAGTCTTCAAGAGCTGAATGTCTTTGGGTGGATGGCTCAGTCCCCCAGACCT  
 GGACTGGAAGGGCCAGCCACCTGCACCTCTAAAAGGGACTGCTGCAGAGACTTTCAGTCGCCAAGAT  
 TGCTGTGAAACTGCAGCGACAGCGAGGAAGAGCTCCCCACCCGCTC

**ACGCGT**ACGCGGCCGCTCGAGCAGAAACTCATCTCAGAAGAGGATCTGGCAGCAAATGATATCCTGGATT  
 ACAAGGATGACGACGATAAGGTTTAA

**Protein Sequence:**

>RC202464 representing NM\_001004106  
 Red=Cloning site Green=Tags(s)

MELENIVANTVLLKAREGGGNRKGSKKWRQMLQFPHISQCEELRSLERDYHSLCERQPIGRLLFREF  
 CATRPELSRCVAFLDGVAEYEVTPDDKRKACGRQLTQNFLSHTGPDLIPEVPRQLVTNCTQRLEQGPCKD  
 LFQELTRLTHEYLSVAPFADYLDIYFNRFLQWKWLERQPVTKNTFRQYRVLGKGGFGEVCACQVRATGK  
 MYACKKLEKKRIKKRKEAMALNEKQILEKVNRFVVSLAYAYETKDALCLVLTLMNGGDLKFHIYHMGQ  
 AGFPEARAVFYAAEICCGLEDLHRERIVYRDLKPENILLDDHGHIRISDLGLAVHVPEGQTIKGRVGTG  
 YMAPEVVKNERITYFSPDWWALGCLLYEMIAGQSPFQQRKKIKREEVERLVKEVPEEYSERFSPQARSLC  
 SQLLCKDPAERLGCRRGGSAREVKEHPLFKKLNFKRLGAGMLEPPFKPDPQAIYCKDVLIDIEQFSTVKGVE  
 LEPTDQDFYQKFATGVSVPWPQWQEMVETECFQELNVFGLDGSVPPDLWDKQPPAPPKGLLQRLF SRQD  
 CCGNCSDEEELPTRL

**TR**TRPLEQKLISEEDLAANDILDYKDDDDKV

**Chromatograms:**

[https://cdn.origene.com/chromatograms/mg3350\\_e05.zip](https://cdn.origene.com/chromatograms/mg3350_e05.zip)

**Restriction Sites:**

Sgfl-Mlul

**Cloning Scheme:**

**ACCN:** NM\_001004106

**ORF Size:** 1728 bp

**OTI Disclaimer:** Due to the inherent nature of this plasmid, standard methods to replicate additional amounts of DNA in E. coli are highly likely to result in mutations and/or rearrangements. Therefore, OriGene does not guarantee the capability to replicate this plasmid DNA. Additional amounts of DNA can be purchased from OriGene with batch-specific, full-sequence verification at a reduced cost. Please contact our customer care team at [custsupport@origene.com](mailto:custsupport@origene.com) or by calling 301.340.3188 option 3 for pricing and delivery.

The molecular sequence of this clone aligns with the gene accession number as a point of reference only. However, individual transcript sequences of the same gene can differ through naturally occurring variations (e.g. polymorphisms), each with its own valid existence. This clone is substantially in agreement with the reference, but a complete review of all prevailing variants is recommended prior to use. [More info](#)

**OTI Annotation:** This clone was engineered to express the complete ORF with an expression tag. Expression varies depending on the nature of the gene.

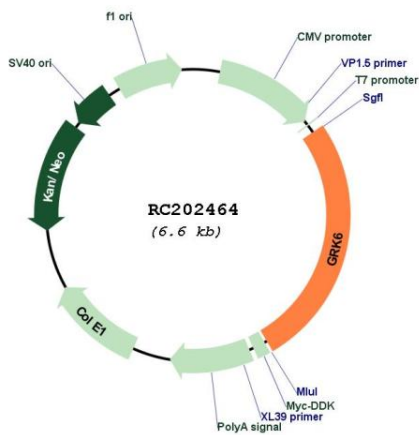
**Components:** The ORF clone is ion-exchange column purified and shipped in a 2D barcoded Matrix tube containing 10ug of transfection-ready, dried plasmid DNA (reconstitute with 100 ul of water).

- Reconstitution Method:**
1. Centrifuge at 5,000xg for 5min.
  2. Carefully open the tube and add 100ul of sterile water to dissolve the DNA.
  3. Close the tube and incubate for 10 minutes at room temperature.
  4. Briefly vortex the tube and then do a quick spin (less than 5000xg) to concentrate the liquid at the bottom.
  5. Store the suspended plasmid at -20°C. The DNA is stable for at least one year from date of shipping when stored at -20°C.

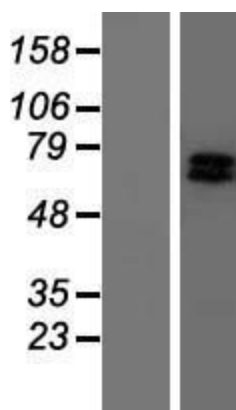
**RefSeq:** [NM\\_001004106.3](#)  
**RefSeq Size:** 2930 bp  
**RefSeq ORF:** 1731 bp  
**Locus ID:** 2870  
**UniProt ID:** [P43250](#)  
**Cytogenetics:** 5q35.3  
**Protein Families:** Druggable Genome, Protein Kinase  
**Protein Pathways:** Chemokine signaling pathway, Endocytosis  
**MW:** 65.8 kDa

**Gene Summary:** This gene encodes a member of the guanine nucleotide-binding protein (G protein)-coupled receptor kinase subfamily of the Ser/Thr protein kinase family. The protein phosphorylates the activated forms of G protein-coupled receptors thus initiating their deactivation. Several transcript variants encoding different isoforms have been described for this gene. [provided by RefSeq, Jul 2008]

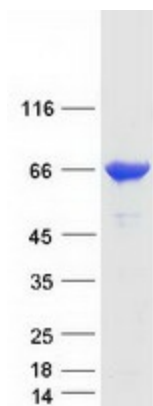
**Product images:**



Circular map for RC202464



Western blot validation of overexpression lysate (Cat# [LY424064]) using anti-DDK antibody (Cat# [TA50011-100]). Left: Cell lysates from untransfected HEK293T cells; Right: Cell lysates from HEK293T cells transfected with RC202464 using transfection reagent MegaTran 2.0 (Cat# [TT210002]).



Coomassie blue staining of purified GRK6 protein (Cat# [TP302464]). The protein was produced from HEK293T cells transfected with GRK6 cDNA clone (Cat# RC202464) using MegaTran 2.0 (Cat# [TT210002]).