

Product datasheet for RC202457

CC130 (CCDC130) (NM_030818) Human Tagged ORF Clone

Product data:

Product Type:	Expression Plasmids
Product Name:	CC130 (CCDC130) (NM_030818) Human Tagged ORF Clone
Tag:	Myc-DDK
Symbol:	CC130
Mammalian Cell Selection:	Neomycin
Vector:	pCMV6-Entry (PS100001)
E. coli Selection:	Kanamycin (25 ug/mL)
ORF Nucleotide Sequence:	>RC202457 ORF sequence Red=Cloning site Blue=ORF Green=Tags(s)

TTTTGTAATACGACTCACTATAGGGCGGCCGGAATTCGTCGACTGGATCCGGTACCGAGGAGATCTGCC
GCC**CGATCGCC**

ATGGGTGAAAGGAAAGGGGTCAACAAGTACTATCCTCCAGACTTCAACCCTGAGAAGCATGGCTCTCTCA
ACCGATACCACAACAGCCACCCGCTTCGGGAGCGGGCTCGGAAGCTGTCACAGGGCATCCTCATATCCG
ATTCGAAATGCCATATAACATCTGGTGCATGGCTGCAAGAACCACATCGGCATGGGTGTTTCGTTACAAT
GCAGAAAAGAAGAAGGTGGGCAATTACTACACAACCCCGATCTACAGTTCGGATGAAATGCCACCTCT
GTGTCAACTACATCGAGATGCAGACGGACCCCGCAACTGCGACTACGTGATCGTGAGTGGCGCCACGG
CAAGGAGGAGCGCTGGGACATGGCGGACAATGAGCAGGTGCTGACCACAGAGCATGAGAAGAAGCAGAAG
CTGGAGACGGACGCCATGTTCCGGCTGGAGCATGGCGAGGCCGACCGCAGCACACTCAAGAAGCGCTGC
CCACTGAGCCACATCCAGGAGGCCAGAGCGCTGGAAGGACGACTTCGCCCTCAACAGCATGCTGCG
GAGAAGGTTCCGGGAAAAGAAAAGCCATCCAGGAGGAGGAGAGAGACCAGGCCTTGACGGCCAAG
GCGAGCCTGACCATCCCGCTGGTGCCGAGACGGAAGATGACCGCAAGCTGGCGGCTCTGCTGAAGTTCC
ACACCCTGGACTCCTACGAGGACAAGCAGAACTCAAGCGGACCGAGATCATCAGCCGCTCTGGTTCCC
CTCTGCCCGGATCCGCTCCAGCAGCAAGTCAAGCGGCTCCTGAAGAAGCTGGCACAGAGCCGAGAG
ACCGCGCTTGCCACCTCCCCATCACCGTGGGGACCTGGGCATCGTGCGCGGAGGTCTCGGGACGTCC
CGGAGAGCCCCAGCATGCGGCCGACACCCCAAGTCTGGGAACCGCGGTACCAGAGGAGGCTGCCCA
GGACCGGCCATGTCCCCGGAGACTGTCTCCGAAACAAGTGAACCCCAAGTGCAGCAGCCCGAGG
GGGAGGAAGGGAGCCGTGAGGACAAGCCCTGTGCGCAGCAGGCTCTCCAGGAGGCAGCTGACACCC
CCGACACGCGGCCACCCCTGCAGTCTCGGCTCCTCCCTCGTGGCGGACTACTCCGACTCGGAGAGTGAG

ACGCGTACGCGGCCGCTCGAGCAGAACTCATCTCAGAAGAGGATCTGGCAGCAAATGATATCCTGGATT
ACAAGGATGACGACGATAAGGTTTAA



[View online »](#)

Protein Sequence: >RC202457 protein sequence
Red=Cloning site Green=Tags(s)

MGERKGVNKYPPDFNPEKHGSLNRYHNSHPLRERARKLSQGIL IIRFEMPYNIWCDGCKNHIGMVRYN
 AEKKKVGNYTTPIYRFRMKCHLCVNYIEMQTPANCDYVIVSGAQRKEERWDMADNEQVLTTEHEKKQK
 LETDAMFRLHEGADRSTLKKALPTLSHIQEAQSAWKDDFALNSMLRRRFREKKKAIQEEEEERDQALQAK
 ASLTIPLVPETEDDRKLAALLKFHTLDSYEDKQKLRTEIISRSWFPSAPGSASSKVSGLVKKLAQSRR
 TALATSPITVGD LGIVRRRSRDVPE SPQHAADTPKSGEPRVPEEAAQDRPMSPGDCPPETTETPKCSSPR
 GQEGSRQDKPLSPAGSSQEAAADTPDRHPCSLGSSLVADYSDSESE

TRTRPLEQKLISEEDLAANDILDYKDDDDKV

Chromatograms: https://cdn.origene.com/chromatograms/mk6391_h12.zip

Restriction Sites: SgfI-MluI

Cloning Scheme:

Cloning sites used for ORF Shuttling:



* The last codon before the Stop codon of the ORF

ACCN: NM_030818

ORF Size: 1188 bp

OTI Disclaimer: The molecular sequence of this clone aligns with the gene accession number as a point of reference only. However, individual transcript sequences of the same gene can differ through naturally occurring variations (e.g. polymorphisms), each with its own valid existence. This clone is substantially in agreement with the reference, but a complete review of all prevailing variants is recommended prior to use. [More info](#)

OTI Annotation: This clone was engineered to express the complete ORF with an expression tag. Expression varies depending on the nature of the gene.

Components: The ORF clone is ion-exchange column purified and shipped in a 2D barcoded Matrix tube containing 10ug of transfection-ready, dried plasmid DNA (reconstitute with 100 ul of water).

Reconstitution Method:

1. Centrifuge at 5,000xg for 5min.
2. Carefully open the tube and add 100ul of sterile water to dissolve the DNA.
3. Close the tube and incubate for 10 minutes at room temperature.
4. Briefly vortex the tube and then do a quick spin (less than 5000xg) to concentrate the liquid at the bottom.
5. Store the suspended plasmid at -20°C. The DNA is stable for at least one year from date of shipping when stored at -20°C.

RefSeq: [NM_030818.4](#)

RefSeq Size: 1679 bp

RefSeq ORF: 1191 bp

Locus ID: 81576

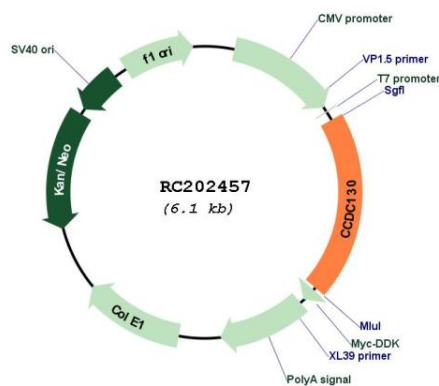
UniProt ID: [P13994](#)

Cytogenetics: 19p13.13

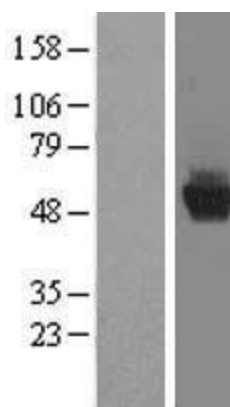
Domains: DUF572

MW: 44.8 kDa

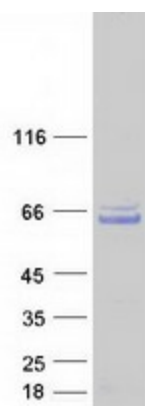
Product images:



Circular map for RC202457



Western blot validation of overexpression lysate (Cat# [LY410688]) using anti-DDK antibody (Cat# [TA50011-100]). Left: Cell lysates from untransfected HEK293T cells; Right: Cell lysates from HEK293T cells transfected with RC202457 using transfection reagent MegaTran 2.0 (Cat# [TT210002]).



Coomassie blue staining of purified CCDC130 protein (Cat# [TP302457]). The protein was produced from HEK293T cells transfected with CCDC130 cDNA clone (Cat# RC202457) using MegaTran 2.0 (Cat# [TT210002]).