

Product datasheet for **RC202449**

beta Synuclein (SNCB) (NM_003085) Human Tagged ORF Clone

Product data:

Product Type: Expression Plasmids
Product Name: beta Synuclein (SNCB) (NM_003085) Human Tagged ORF Clone
Tag: Myc-DDK
Symbol: beta Synuclein
Mammalian Cell Selection: Neomycin
Vector: pCMV6-Entry (PS100001)
E. coli Selection: Kanamycin (25 ug/mL)
ORF Nucleotide Sequence: >RC202449 ORF sequence
Red=Cloning site Blue=ORF Green=Tags(s)

TTTTGTAATACGACTCACTATAGGGCGGCCGGAATTCGTCGACTGGATCCGGTACCGAGGAGATCTGCC
GCC**CGATCGCC**

ATGGACGTGTTTCATGAAGGGCCTGTCCATGGCCAAGGAGGGCGTCGTGGCAGCCGCGGAGAAAACCAAGC
AGGGGGTCAACGAGGCGCGGAGAAAGACCAAGGAGGGCGTCTCTACGTCGGAAGCAAGACCCGAGAAGG
TGTGGTACAAGGTGTGGCTTCAGTGGCTGAAAAACCAAGGAACAGGCCTCACATCTGGGAGGAGCTGTG
TTCTCTGGGCAGGGAACATCGCAGCAGCCACAGGACTGGTGAAGAGGGAGGAATCCCTACTGATCTGA
AGCCAGAGGAAGTGGCCAGGAAGCTGCTGAAGAACCCTGATTGAGCCCTGATGGAGCCAGAAGGGGA
GAGTTATGAGGACCCACCCAGGAGGAATATCAGGAGTATGAGCCAGAGGCG

ACGCGTACGCGGCCGCTCGAGCAGAACTCATCTCAGAAGAGGATCTGGCAGCAAATGATATCCTGGATT
ACAAGGATGACGACGATAAGGTTTAA

Protein Sequence: >RC202449 protein sequence
Red=Cloning site Green=Tags(s)

MDVFMKGLSMAKEGVVAAAEKTKQGVTEAAEKTKEGVL YVGSKTREGVVQGVASVAEKTKEQASHLGGAV
FSGAGNIAAATGLVKREEFPTDLKPEEVAQEAAEEPLIEPLMEPEGESYEDPPQEYQEYEPEA

TRTRPLEQKLISEEDLAANDILDYKDDDDKV

Chromatograms: https://cdn.origene.com/chromatograms/mk6085_d07.zip

Restriction Sites: Sgfl-MluI



[View online »](#)

Cloning Scheme:



ACCN: NM_003085

ORF Size: 402 bp

OTI Disclaimer: The molecular sequence of this clone aligns with the gene accession number as a point of reference only. However, individual transcript sequences of the same gene can differ through naturally occurring variations (e.g. polymorphisms), each with its own valid existence. This clone is substantially in agreement with the reference, but a complete review of all prevailing variants is recommended prior to use. [More info](#)

OTI Annotation: This clone was engineered to express the complete ORF with an expression tag. Expression varies depending on the nature of the gene.

Components: The ORF clone is ion-exchange column purified and shipped in a 2D barcoded Matrix tube containing 10ug of transfection-ready, dried plasmid DNA (reconstitute with 100 ul of water).

- Reconstitution Method:
1. Centrifuge at 5,000xg for 5min.
 2. Carefully open the tube and add 100ul of sterile water to dissolve the DNA.
 3. Close the tube and incubate for 10 minutes at room temperature.
 4. Briefly vortex the tube and then do a quick spin (less than 5000xg) to concentrate the liquid at the bottom.
 5. Store the suspended plasmid at -20°C. The DNA is stable for at least one year from date of shipping when stored at -20°C.

RefSeq: [NM_003085.5](#)

RefSeq Size: 1310 bp

RefSeq ORF: 405 bp

Locus ID: 6620

UniProt ID: [Q16143](#)

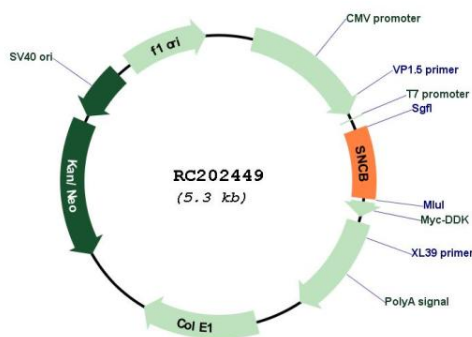
Cytogenetics: 5q35.2

Domains: Synuclein

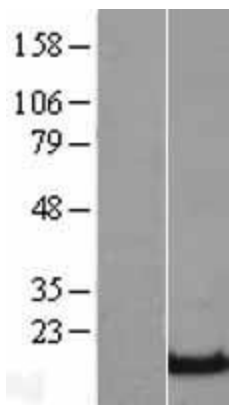
MW: 14.3 kDa

Gene Summary: This gene encodes a member of a small family of proteins that inhibit phospholipase D2 and may function in neuronal plasticity. The encoded protein is abundant in lesions of patients with Alzheimer disease. A mutation in this gene was found in individuals with dementia with Lewy bodies. Alternative splicing results in multiple transcript variants. [provided by RefSeq, Dec 2015]

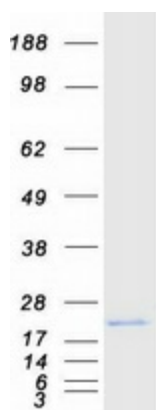
Product images:



Circular map for RC202449



Western blot validation of overexpression lysate (Cat# [LY401075]) using anti-DDK antibody (Cat# [TA50011-100]). Left: Cell lysates from untransfected HEK293T cells; Right: Cell lysates from HEK293T cells transfected with RC202449 using transfection reagent MegaTran 2.0 (Cat# [TT210002]).



Coomassie blue staining of purified SNCB protein (Cat# [TP302449]). The protein was produced from HEK293T cells transfected with SNCB cDNA clone (Cat# RC202449) using MegaTran 2.0 (Cat# [TT210002]).