

## Product datasheet for RC202447

### IL1RA (IL1RN) (NM\_173843) Human Tagged ORF Clone

#### Product data:

|                           |  |
|---------------------------|--|
| Product Type:             | Expression Plasmids  |
| Product Name:             | IL1RA (IL1RN) (NM_173843) Human Tagged ORF Clone                   |
| Tag:                      | Myc-DDK  |
| Symbol:                   | IL1RA  |
| Synonyms:                 | DIRA; ICIL-1RA; IL-1ra; IL-1ra3; IL-1RN; IL1F3; IL1RA; IRAP; MVCD4 |
| Mammalian Cell Selection: | Neomycin   |
| Vector:                   | pCMV6-Entry (PS100001)   |
| E. coli Selection:        | Kanamycin (25 ug/mL)   |
| ORF Nucleotide Sequence:  | >RC202447 ORF sequence<br>Red=Cloning site Blue=ORF Green=Tags(s)  |

TTTTGTAATACGACTCACTATAGGGCGGCCGGAATTCGTCGACTGGATCCGGTACCGAGGAGATCTGCC  
 GCCGCGATCGCC

ATGGCTTTAGAGACGATCTGCCGACCCTCTGGGAGAAAATCCAGCAAGATGCAAGCCTTCAGAATCTGGG  
 ATGTTAACGAGAAGACCTTCTATCTGAGGAACAACCAACTAGTTGCCGGATACTTGAAGGACCAATGT  
 CAATTTAGAAGAAAAGATAGATGTGTACCCATTGAGCCTCATGCTCTGTTCTTGGGAATCCATGGAGGG  
 AAGATGTGCTGTCTGTGTCAAGTCTGGTGATGAGACCAGACTCCAGCTGGAGGCAGTTAACATCACTG  
 ACCTGAGCGAGAACAGAAAGCAGGACAAGCGCTTCGCCTTCATCCGCTCAGACAGTGGCCCCACCACCAG  
 TTTTGAGTCTGCCGCTGCCCGGTTGGTTCCTCTGCACAGCGATGGAAGCTGACCAGCCCGTCAGCCTC  
 ACCAATATGCCTGACGAAGGCGTCATGGTCACCAAATTCTACTCCAGGAGGACGAG

ACGCGTACGCGGCCGCTCGAGCAGAACTCATCTCAGAAGAGGATCTGGCAGCAAATGATATCCTGGATT  
 ACAAGGATGACGACGATAAGGTTTAA

|                   |  |
|-------------------|--|
| Protein Sequence: | >RC202447 protein sequence<br>Red=Cloning site Green=Tags(s) |
|-------------------|--|

MALETICRPSGRKSSKMQA FRIWDVNQKTFYLRNNQLVAGYLQGPVNLEEKIDVVP IEPHALFLGIHGG  
 KMCLSCVKSGDETRLQLEAVNITDLSEN RKQDKRFAFIRSDSGPTTSFESAACPGWFLCTAMEADQPVSL  
 TNMPDEGVMVTKFYFQEDE

TRTRPLEQKLISEEDLAANDILDYKDDDDKV

|                |   |
|----------------|---|
| Chromatograms: | <a href="https://cdn.origene.com/chromatograms/mk6053_d10.zip">https://cdn.origene.com/chromatograms/mk6053_d10.zip</a> |
|----------------|---|


[View online »](#)

**Restriction Sites:** SgfI-MluI

**Cloning Scheme:**



**ACCN:** NM\_173843

**ORF Size:** 477 bp

**OTI Disclaimer:** The molecular sequence of this clone aligns with the gene accession number as a point of reference only. However, individual transcript sequences of the same gene can differ through naturally occurring variations (e.g. polymorphisms), each with its own valid existence. This clone is substantially in agreement with the reference, but a complete review of all prevailing variants is recommended prior to use. [More info](#)

**OTI Annotation:** This clone was engineered to express the complete ORF with an expression tag. Expression varies depending on the nature of the gene.

**Components:** The ORF clone is ion-exchange column purified and shipped in a 2D barcoded Matrix tube containing 10ug of transfection-ready, dried plasmid DNA (reconstitute with 100 ul of water).

**Reconstitution Method:**

1. Centrifuge at 5,000xg for 5min.
2. Carefully open the tube and add 100ul of sterile water to dissolve the DNA.
3. Close the tube and incubate for 10 minutes at room temperature.
4. Briefly vortex the tube and then do a quick spin (less than 5000xg) to concentrate the liquid at the bottom.
5. Store the suspended plasmid at -20°C. The DNA is stable for at least one year from date of shipping when stored at -20°C.

**Note:** Plasmids are not sterile. For experiments where strict sterility is required, filtration with 0.22um filter is required.

**RefSeq Size:** 1973 bp

**RefSeq ORF:** 432 bp

**Locus ID:** 3557

UniProt ID: [P18510](#)

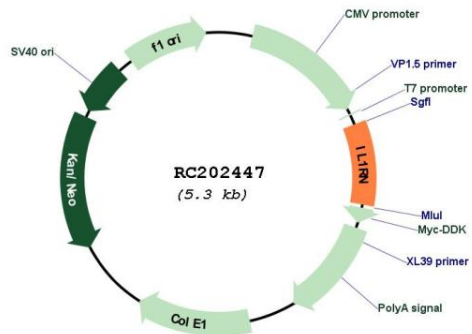
Cytogenetics: 2q14.1

Protein Families: Druggable Genome, Secreted Protein

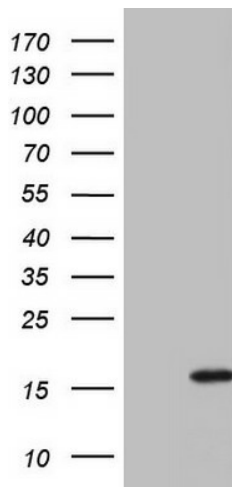
MW: 17.9 kDa

**Gene Summary:** The protein encoded by this gene is a member of the interleukin 1 cytokine family. This protein inhibits the activities of interleukin 1, alpha (IL1A) and interleukin 1, beta (IL1B), and modulates a variety of interleukin 1 related immune and inflammatory responses, particularly in the acute phase of infection and inflammation. This gene and five other closely related cytokine genes form a gene cluster spanning approximately 400 kb on chromosome 2. A polymorphism of this gene is reported to be associated with increased risk of osteoporotic fractures and gastric cancer. Several alternatively spliced transcript variants encoding distinct isoforms have been reported. [provided by RefSeq, Aug 2020]

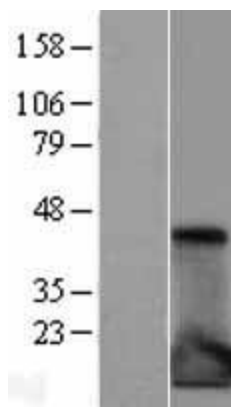
## Product images:



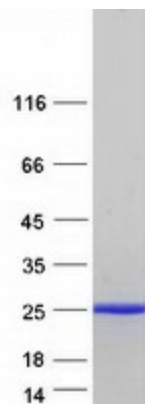
Circular map for RC202447



HEK293T cells were transfected with the pCMV6-ENTRY control (Cat# [PS100001], Left lane) or pCMV6-ENTRY IL1RN (Cat# RC202447, Right lane) cDNA for 48 hrs and lysed. Equivalent amounts of cell lysates (5 ug per lane) were separated by SDS-PAGE and immunoblotted with anti-IL1RN (Cat# [TA803422]). Positive lysates [LY403571] (100ug) and [LC403571] (20ug) can be purchased separately from OriGene.



Western blot validation of overexpression lysate (Cat# [LY403571]) using anti-DDK antibody (Cat# [TA50011-100]). Left: Cell lysates from untransfected HEK293T cells; Right: Cell lysates from HEK293T cells transfected with RC202447 using transfection reagent MegaTran 2.0 (Cat# [TT210002]).



Coomassie blue staining of purified IL1RN protein (Cat# [TP302447]). The protein was produced from HEK293T cells transfected with IL1RN cDNA clone (Cat# RC202447) using MegaTran 2.0 (Cat# [TT210002]).