

Product datasheet for **RC202445**

ZC3H11A (NM_014827) Human Tagged ORF Clone

Product data:

Product Type:	Expression Plasmids
Product Name:	ZC3H11A (NM_014827) Human Tagged ORF Clone
Tag:	Myc-DDK
Symbol:	ZC3H11A
Synonyms:	ZC3HDC11A
Mammalian Cell Selection:	Neomycin
Vector:	pCMV6-Entry (PS100001)
E. coli Selection:	Kanamycin (25 ug/mL)



[View online »](#)

ORF Nucleotide Sequence:

>RC202445 ORF sequence
 Red=Cloning site Blue=ORF Green=Tags(s)

TTTTGTAATACGACTCACTATAGGGCGGCCGGGAATTCGTCGACTGGATCCGGTACCGAGGAGATCTGCC
 GCC**CGGATCGCC**

ATGCCTAATCAAGGAGAAGACTGCTATTTTTTTTTCTATTCCACATGTACCAAAGGCGACAGCTGCCCAT
 TCCGTCACGTGTAAGCTGCAATAGGAAATGAAACTGTTTGCACATTATGGCAAGAAGGGCGCTGTTTTCG
 ACAGGTGTGCAGGTTTCGGCACATGGAGATTGATAAAAAACGCAGTGAAATTCCTTGTTATTGGGAAAT
 CAGCCAACAGGATGTCAAAAATTAAGTGCCTTTCCATCACAATAGAGGACGATATGTTGATGGCCTTT
 TCCTACCTCCGAGCAAACTGTGTGCCACTGTGCCTGAGTCACCAGAAGAGGAAGTGAAGGCTAGCCA
 ACTTTCAGTTCAGCAGAACAAATGTCTGTCCAGTCCAATCCTTCCCCTCAGCTGCGGAGCGTTATGAAA
 GTAGAAAGTTCGAAAAATGTTCTAGCCCCACGCATCCACCAGTGTAAATTAATGCTGCAGATGATGATG
 AAGATGATGATGATCAGTTTTCTGAGGAAGGTGATGAAACCAAAACACCTACCCTGCAACCAACTCTGA
 AGTTCACAATGGATTACGAGTGACTTCTGTCCGAAACCTGCAGTCAATATAAGCAAGGTGAATGTTTG
 AATTTTGGAAATAAACTCTTGAGGAAATTAAGTCAAAGAAAATGAAGGAAAAATCTAAGAAGCAAGGTG
 AGGGTTCTTCAGGAGTTCCAGTCTTTACTCCACCCTGAGCCGTTCCAGGTCCTGAAAAAGAAAATGT
 CAGGACTGTGGTGAAGACAGTAACTCTCTCCACAAAACAAGGAGAAGAACCCTTGTTAGATTGAGTCTT
 ACTGAGAGACTGGGAAACGAAAATTTTCAGCAGGCGGTGACAGTGATCCTCCATTAAGCGTAGCCTGG
 CACAGAGGCTAGGGAAGAAAGTTGAAGTCCAGAACTAACATTGACAAAACACCAAGAAAGCTCAAGT
 TTCCAAGTCTCTTAAGGAGCGATTAGGCATGTCAGCTGATCCAGATAATGAGGATGCAACAGATAAAGTT
 AATAAAGTTGGTGAATCCATGTGAAGACATTAGAAGAAATCTCTTGAAGAGCCAGTCAGAAACGTG
 GAGAATTGCAAACTAACTCAAGACAGAAGGACCTTCAAAAAGTATGATTCTACTTCAGGAGCAAGAAG
 CTCTCCACTATCCGTATCAAAACCTTCTGTAGGTCTGGCTGAAAAAAAACATCGGCAGCAGGAAGCA
 GAGAGACAAAAAGCAAAAAGGATACAACCTGCAAGCTAAAGATTGATAGTGAATTAAAAAACAG
 TAGTTTTGCCACCATTGTTGCCAGCAGAGGACAATCAGAGGAGCCTGCAGGTAAAAACAAAGTCTATGCA
 GGAGGTGCACATCAAGACGCTGGAAGAAATTAAGTGGAGAAGGCACTGAGGGTGCAGCAGAGCTCTGAG
 AGCAGCACCAGCTCCCGTCTCAACACGAGGCCACTCCAGGGCAAGGCGGCTGCTGCGAATCACCAAAA
 GAACAGGGATGAAAGAAGAGAAGAACCTTCAGGAAGGAAATGAAGTTGATTCTCAGAGCAGTATTAGAAC
 AGAAGCTAAAGAGGCTTCAGGTGAGACCACAGGAGTTGACATCACTAAAATCAAGTCAAGAGATGTGAG
 ACCATGAGAGAGAAGCACATGCAGAAACAGCAGGAGAGGAAAAATCAGTCTTGACACCTCTTCGGGGAG
 ATGTAGCCTCTTGCAATACCCAAGTGGCAGAGAAACCAGTGCTCACTGCTGTGCCAGGAATCACACGGCA
 CCTGACCAAGCGGCTTCCCAAAAGTATCCCAGAAGGTGGAGGTAGAAACCTCAGGGATTGGAGACTCA
 TTATTGAATGTGAAATGTGCAGCACAGACCTTGGAAAAAGGGTAAAGCTAAACCCAAAGTGAACGTGA
 AGCCATCTGTGGTTAAAGTTGTGTATCCCCAAATGGCCCCAAACGTAAGGCAGTGGAGATGCACGC
 TGCTGTCAATTGCCGCTGTGAAGCCACTCAGTCCAGCAGTGTCTACAGGAACCCCCAGCCAAAAAGGCA
 GCTGTGGCTGTTGTCCGCTTGTCTGTGAGGACAAATCAGTCACTGTGCCTGAAGCAGAAAATCCTAGAG
 ACAGTCTTGTGCTGCCTCAACCCAGTCTCTTCAGATTCTCACCCCGGAGGTGTCTGGCCCTTCCTC
 ATCCCAAATGAGCATGAAAACCTCGCCGACTCAGCTCTGCCTCAACAGGAAAGCCCCACTCTCTGTGGAG
 GATGATTTTGAAGAACTAATATGGGAGATTTTCAGGAGGCAAAATGGAAGCTGAGATTGACCTGGATCCTG
 GGAAAGATGAAGATGACCTTCTGCTTGAGCTATCAGAAATGATTGATAGC

ACGCGTACGCGGCCGCTCGAGCAGAACTCATCTCAGAAGAGGATCTGGCAGCAATGATATCCTGGATT
 ACAAGGATGACGACGATAAGGTTTAA

Protein Sequence: >RC202445 protein sequence
Red=Cloning site Green=Tags(s)

MPNQGEDCYFFFYSTCTKGDSCPFRRHCEAAIGNETVCTLWQEGRCFRQVCRFRHMEIDKKRSEIPCYWEN
QPTGCQKLNCAFHHNRGRYVDGLFLPPSKTVLPTVPESPEEEVKASQLSVQONKLSVQSNPSPQLRSVMK
VESSENVPSPTHPPVVINAADDEDDDDQFSEEGDETKTPTLQPTPEVHNGLRVTSVRKPAVNIKQGECL
NFGIKTLEEIKSKMKKEKSKKQEGEGSSGVSSLLHPEPVPGEKENVRTVVRTVTLSTKQGEEPLVRLSL
TERLGKRKF SAGGSDPPLKRSLAQR LGKKVEAPETNIDKTPKKAQVSKSLKERLGMSADPDNEDATDKV
NKVGEIHVKTLEEILLERASQKRGELQTKLKTGEPSTDDSTSGARSSSTIRIKTFSEVLAEKKHRQGEA
ERQKSKKDTTCIKLKIDSEIKKTIVLPPIVASRGQSEEPAGKTKSMQEVHIKTLEEIKLEKALRVQQSSE
SSTSSPSQHEATPGARRLLRITKRTGMKEEKNLQEGNEVDSQSSIRTEAKEASGETTGVDITKIQVKRCE
TMREKHMQQQEREKSVLTPLRGDVASCNTQVAEKPVL TAVPGITRHLTKRLPTKSSQKVEVETSGIGDS
LLNVKCAAQTLEKRGKAKPKVNVKPSVVKVVSSPKLAPKRKAVEMHAAVIAAVKPLSSSSVLQEPKAKA
AVAVVPLVSEDKSVTPEAENPRDSLVLPTQSSSDSSPPEVSGPSSSQMSMKTRRLSSASTGKPPLSVE
DDFEKLIWEISGGKLEAEIDLDPGKDEDDLLLELSEMIDS

TRTRPLEQKLISEEDLAANDILDYKDDDDKV

Chromatograms: https://cdn.origene.com/chromatograms/mk6575_c04.zip

Restriction Sites: Sgfl-Mlul

Cloning Scheme:


ACCN: NM_014827

ORF Size: 2430 bp

OTI Disclaimer: The molecular sequence of this clone aligns with the gene accession number as a point of reference only. However, individual transcript sequences of the same gene can differ through naturally occurring variations (e.g. polymorphisms), each with its own valid existence. This clone is substantially in agreement with the reference, but a complete review of all prevailing variants is recommended prior to use. [More info](#)

OTI Annotation: This clone was engineered to express the complete ORF with an expression tag. Expression varies depending on the nature of the gene.

Components: The ORF clone is ion-exchange column purified and shipped in a 2D barcoded Matrix tube containing 10ug of transfection-ready, dried plasmid DNA (reconstitute with 100 ul of water).

Reconstitution Method:

1. Centrifuge at 5,000xg for 5min.
2. Carefully open the tube and add 100ul of sterile water to dissolve the DNA.
3. Close the tube and incubate for 10 minutes at room temperature.
4. Briefly vortex the tube and then do a quick spin (less than 5000xg) to concentrate the liquid at the bottom.
5. Store the suspended plasmid at -20°C. The DNA is stable for at least one year from date of shipping when stored at -20°C.

RefSeq: [NM_014827.5](#)

RefSeq Size: 4795 bp

RefSeq ORF: 2433 bp

Locus ID: 9877

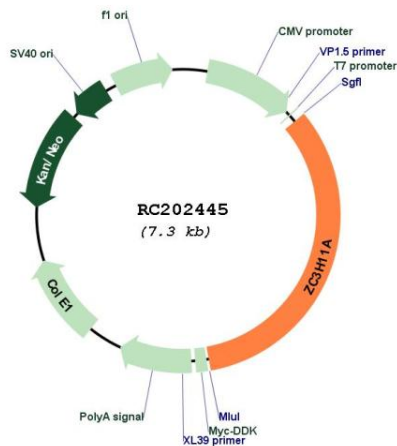
UniProt ID: [O75152](#)

Cytogenetics: 1q32.1

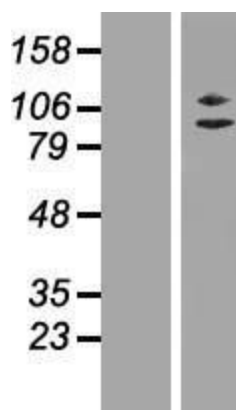
MW: 89.1 kDa

Gene Summary: Involved in nuclear mRNA export; probably mediated by association with the TREX complex. [UniProtKB/Swiss-Prot Function]

Product images:



Circular map for RC202445



Western blot validation of overexpression lysate (Cat# [LY415031]) using anti-DDK antibody (Cat# [TA50011-100]). Left: Cell lysates from untransfected HEK293T cells; Right: Cell lysates from HEK293T cells transfected with RC202445 using transfection reagent MegaTran 2.0 (Cat# [TT210002]).