

Product datasheet for **RC202441**

CAMKV (NM_024046) Human Tagged ORF Clone

Product data:

Product Type:	Expression Plasmids
Product Name:	CAMKV (NM_024046) Human Tagged ORF Clone
Tag:	Myc-DDK
Symbol:	CAMKV
Synonyms:	1G5; VACAMKL
Mammalian Cell Selection:	Neomycin
Vector:	pCMV6-Entry (PS100001)
E. coli Selection:	Kanamycin (25 ug/mL)



[View online »](#)

ORF Nucleotide Sequence:

>RC202441 ORF sequence
 Red=Cloning site Blue=ORF Green=Tags(s)

TTTTGTAATACGACTCACTATAGGGCGGCCGGAATTCGTCGACTGGATCCGGTACCGAGGAGATCTGCC
 GCC**CGCATCGCC**

ATGCCGTTTGGTGTGTGACTCTGGGCGACAAGAAGAACTATAACCAGCCATCGGAGGTGACTGACAGAT
 ATGATTTGGGACAGGTCAACAAGACTGAGGAGTTTTGTGAAATCTCCGGGCAAGGACAAGACGACAGG
 CAAGCTGCACACCTGCAAGAAGTTCCAGAAGCGGGACGGCCGAAGGTGCGGAAAGCTGCCAAGAACGAG
 ATAGGCATCCTCAAGATGGTGAAGCATCCAACATCCTACAGCTGGTGGATGTGTTTGTGACCCGCAAGG
 AGTACTTTATCTTCTGGAGCTGGCCACGGGGAGGAGGTGTTTGACTGGATCCTGGACCAGGGCTACTA
 CTCGGAGCGAGACACAAGCAACGTGGTACGGCAAGTCTGGAGGCCGTGGCCTATTTGCACTCACTCAAG
 ATCGTGACAGGAATCTCAAGCTGGAGAACCTGGTTTACTACAACCGGCTGAAGAAGCTCGAAGATTGTCA
 TCAGTGACTTCCATCTGGCTAAGCTAGAAAATGGCCTCATCAAGGAGCCCTGTGGGACCCCGAGTATCT
 GGCCCCAGAGGTGGTAGGCCGGCAGCGGTATGGACGCCCTGTGGACTGCTGGGCCATTGGAGTCATCATG
 TACATCTGCTTTTCAGGCAATCCACCTTTCTATGAGGAGGTGGAAGAAGATGATTATGAGAACCATGATA
 AGAATCTCTCCGAAGATCCTGGCTGGTACTATGAGTTTGACTCTCCATATTGGGATGATATTTTCGCA
 GGCAGCCAAAGACCTGGTCAAGGCTGATGGAGTGGAGCAAGACCAGCGGATCACTGCAGAAGAGGCC
 ATCTCCCATGAGTGGATTTCTGGCAATGCTGCTTCTGATAAGAACATCAAGGATGGTGTCTGTGCCCAGA
 TTGAAAAGAACTTTGCCAGGGCCAAGTGGAGAAGGCTGTCCGAGTGACCACCCTCATGAAACGGCTCCG
 GGCACCAGAGCAGTCCAGCACGGCTGCAGCCAGTCCGCTCAGCCACAGACACTGCCACCCCGGGGCT
 GCAGGTGGGGCCACAGCTGCAGCTGCGAGTGGAGTACCTCAGCCCTGAGGGTGTGCTGCTCGTGCTG
 CAAAGAGTGATAATGTGGCCCCCGACAGCCGTAGTGCCACCCACAGACAGATGGAAGTGCACCCAGC
 CACTGATGGCAGTGTACCCAGCCACCGATGGAAGCATCACTCCAGCCACTGATGGGAGTGTACCCCA
 GCCACTGACAGGAGCGCTACTCCAGCCACTGATGGGAGAGCCACACCAGCCACAGAGAGAGACTGTGC
 CCACCACCCAAAGCAGTGCCATGCTGGCCACCAAGGCAGCTGCCACCCCTGAGCCGGCTATGGCCAGCC
 GGACAGCACAGCCCGAGGGGCCACAGGCCAGGCTCCACCCTTAGTAAAGGGGAAGAGGCTGCTGGT
 TATGCCCAGGAGTCTCAAAGGGAGGAGGCCAGC

ACGCGTACGCGGCCGCTCGAGCAGAAACTCATCTCAGAAGAGGATCTGGCAGCAAATGATATCTGGATT
 ACAAGGATGACGACGATAAGGTTTAA

Protein Sequence:

>RC202441 protein sequence
 Red=Cloning site Green=Tags(s)

MPFGCVTLGDKKNYNQPSEVTDYDLGQVIKTEEFCEIFRAKDKTTGKLHTCKKFQKRDGRKVRKAAKNE
 IGILKMKVHPNIIQLVDVVFVTRKEYFIFLELATGREVFDWILDQGYYSERDTSNVVRQVLEAVAYLHSLK
 IVHRNLKLENLVYYNRLKNSKIVISDFHLAKLENGLIKEPCGTPEYLAPEVVGRQRYGRPVDCWAIQVIM
 YILLSGNPPFYEEVEEDDYENHDKNLFKILAGDYEFDSFYWDDISQAAKDLVTRLMEVEQDQRITAEAA
 ISHEWISGNAASDKNIKDGVCQIEKNFARAKWKAARVTTLMKRLRAPEQSSTAAAQSASATDTPGA
 AGGATAAASGATSAPEGDAARAASDNVAPADRSATPATDGSATPATDGSVTPATDGSITPATDGSVTP
 ATDRSATPATDGRATPATEESTVPTTQSSAMLATKAAATPEPAMAQPDSTAPEGATGQAPPSSKGEAAAG
 YAQESQREEAS

TRTRPLEQKLISEEDLAANDILDYKDDDDKV

Chromatograms:

https://cdn.origene.com/chromatograms/mk6153_g04.zip

Restriction Sites:

Sgfl-Mlul

Cloning Scheme:


ACCN: NM_024046

ORF Size: 1503 bp

OTI Disclaimer: The molecular sequence of this clone aligns with the gene accession number as a point of reference only. However, individual transcript sequences of the same gene can differ through naturally occurring variations (e.g. polymorphisms), each with its own valid existence. This clone is substantially in agreement with the reference, but a complete review of all prevailing variants is recommended prior to use. [More info](#)

OTI Annotation: This clone was engineered to express the complete ORF with an expression tag. Expression varies depending on the nature of the gene.

Components: The ORF clone is ion-exchange column purified and shipped in a 2D barcoded Matrix tube containing 10ug of transfection-ready, dried plasmid DNA (reconstitute with 100 ul of water).

- Reconstitution Method:**
1. Centrifuge at 5,000xg for 5min.
 2. Carefully open the tube and add 100ul of sterile water to dissolve the DNA.
 3. Close the tube and incubate for 10 minutes at room temperature.
 4. Briefly vortex the tube and then do a quick spin (less than 5000xg) to concentrate the liquid at the bottom.
 5. Store the suspended plasmid at -20°C. The DNA is stable for at least one year from date of shipping when stored at -20°C.

RefSeq: [NM_024046.5](#)

RefSeq Size: 3028 bp

RefSeq ORF: 1506 bp

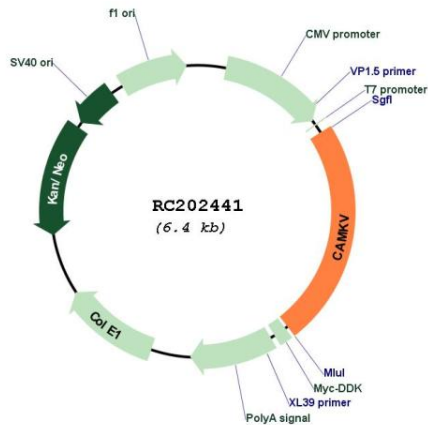
Locus ID: 79012

UniProt ID: [Q8NCB2](#)

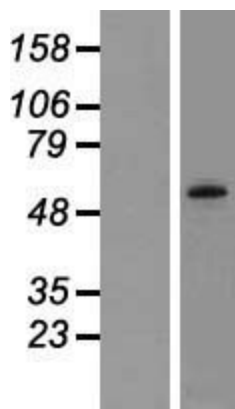
Cytogenetics: 3p21.31

Domains: pkinase, TyrKc, S_TKc
Protein Families: Druggable Genome, Protein Kinase
MW: 54.4 kDa
Gene Summary: Does not appear to have detectable kinase activity.[UniProtKB/Swiss-Prot Function]

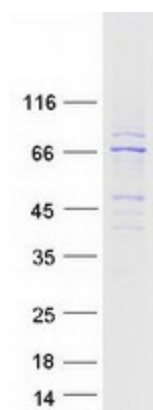
Product images:



Circular map for RC202441



Western blot validation of overexpression lysate (Cat# [LY411422]) using anti-DDK antibody (Cat# [TA50011-100]). Left: Cell lysates from untransfected HEK293T cells; Right: Cell lysates from HEK293T cells transfected with RC202441 using transfection reagent MegaTran 2.0 (Cat# [TT210002]).



Coomassie blue staining of purified CAMKV protein (Cat# [TP302441]). The protein was produced from HEK293T cells transfected with CAMKV cDNA clone (Cat# RC202441) using MegaTran 2.0 (Cat# [TT210002]).