

Product datasheet for **RC202438**

KLF5 (NM_001730) Human Tagged ORF Clone

Product data:

Product Type:	Expression Plasmids
Product Name:	KLF5 (NM_001730) Human Tagged ORF Clone
Tag:	Myc-DDK
Symbol:	KLF5
Synonyms:	BTEB2; CKLF; IKLF
Mammalian Cell Selection:	Neomycin
Vector:	pCMV6-Entry (PS100001)
E. coli Selection:	Kanamycin (25 ug/mL)



[View online »](#)

ORF Nucleotide Sequence:

>RC202438 representing NM_001730
 Red=Cloning site Blue=ORF Green=Tags(s)

TTTTGTAATACGACTCACTATAGGGCGGCCGGGAATTCGTCGACTGGATCCGGTACCGAGGAGATCTGCC
 GCC**CGGATCGCC**

ATGGCTACAAGGGTGCTGAGCATGAGCGCCCGCTGGACCCGTCGCCAGCCGCCGGCCGCGCAGGACG
 AGCCGGTGTTCGCGCAGCTCAAGCCGGTCTGGCGCCGCGAATCCGGCCCGCGACGCGGGCTCTTCCC
 CGGCGAGGAGCTGAAGCACGCGCACCCAGCCCGCAGGCGCAGCCCGCGCCCGCGCAGGCCCGCAGCCG
 GCCCAGCCGCCGCCACCGGCCCGGGTGCCTCCAGAGGACCTGGTCCAGACAAGATGTGAAATGGAGA
 AGTATCTGACACCTCAGCTTCTCCAGTTCTATAATTCCAGAGCATAAAAAGTATAGACGAGACAGTGC
 CTCAGTCGTAGACCAGTTCTTCACTGACACTGAAGGGTTACCTTACAGTATCAACATGAACGTCTTCTC
 CCTGACATCACTCACCTGAGAACTGGCCTCTACAAATCCCAGAGACCGTGCCTAACACACATCAAGACAG
 AACCTGTTGCCATTTTCAGCCACCAGAGTGAAACGACTGCCCTCTCCGGCCCCGACCCAGGCCCTCCC
 TGAGTTACCAGTATATTCAGCTCACACCAGCCGACGCTCCAGAGGTGAACAATATTTTCATCAAACAA
 GAACCTTCTACACCAGATCTTCACTTTCTGTCCCTACCCAGCAGGGCCACCTGTACCAGCTACTGAATA
 CACCGGATCTAGATATGCCAGTTCTACAAATCAGACAGCAGCAATGGACTCTTAATGTTTCTATGTC
 AGCTGCCATGGCAGGCCCTAACACACACACCTCTGCTGTTCCGCAGACTGCAGTGAACAATTCCAGGGC
 ATGCCCTTGCACATACACAATGCCAAGTCAGTTTCTTCCACAACAGGCCACTTACTTTCCCCCGTCAC
 CACCAAGCTCAGAGCCTGGAAGTCCAGATAGACAAGCAGAGATGCTCCAGAAATTAACCCACCTCCATC
 CTATGCTGCTACAATTGCTTCTAACTGGCAATCACAATCCAAATTAACCCACCCTGCCAGTTAAC
 TCACAAAACATCCAACCTGTGAGATAACAATAAGAGGAGTAACCCCGATTTGGAGAAACGACGCATCCACT
 ACTGCGATTACCCTGGTTGCACAAAAGTTTATACCAAGTCTTCTCATTTAAAAGCTCACCTGAGGACTCA
 CACTGGTGAAAAGCCATACAAGTGTACCTGGGAAGGCTGCGACTGGAGGTTTCGCGCGATCGGATGAGCTG
 ACCCGCCACTACCGGAAGCACACAGGCGCAAGCCCTTCCAGTGCAGGGTGTGCAACCGCAGCTTCTCG
 GCTCTGACCACCTGGCCCTGCATATGAAGAGGCCACAGAAC

ACGCGTACGCGGCCGCTCGAGCAGAACTCATCTCAGAAGAGGATCTGGCAGCAAATGATATCCTGGATT
 ACAAGGATGACGACGATAAGGTTTAA

Protein Sequence:

>RC202438 representing NM_001730
 Red=Cloning site Green=Tags(s)

MATRVLSMSARLGPVPQPPAPQDEPVFAQLKPVLGAANPARDAALFPGEELKHAHHRPQAQPAPAQAPQP
 AQPPATGPRLPPEDLVQTRCEMEKYLTPQLPPVPIIPEHKYRRDSASVVDQFFDTDEGLPYSINMNVFL
 PDITHLRTGLYKSRPCVTHIKTEPVAFSHQSETTAPPPAPTQALPEFTSIFSSHQTAPEVNNIFIKQ
 ELPTPDHLVPTQQGHLYQLLNTPLDMPSSNTQTAAMDTLNVSMSAAMAGLNTHTSVAPQTAVKQFQG
 MPPCTYTMP SQFLPQQATYFPPSPSPSEPGSPDRQAEMLQNLTPPPSYAATIASKLAIHNPPLPTLLPVN
 SQNIQPVRYNRRSNPDLEKRRIH YCDYPGCTKVYTKSSHLKAHLRTHTGEKPYKCTWEGCDWRFARSDEL
 TRHYRKHTGAKPFQCGVCNRSF SRSDHLALHMKRHQN

TRTRPLEQKLISEEDLAANDILDYKDDDDKV

Chromatograms:

https://cdn.origene.com/chromatograms/mg3554_c01.zip

Restriction Sites:

Sgfl-Mlul

Cloning Scheme:


ACCN: NM_001730

ORF Size: 1371 bp

OTI Disclaimer: The molecular sequence of this clone aligns with the gene accession number as a point of reference only. However, individual transcript sequences of the same gene can differ through naturally occurring variations (e.g. polymorphisms), each with its own valid existence. This clone is substantially in agreement with the reference, but a complete review of all prevailing variants is recommended prior to use. [More info](#)

OTI Annotation: This clone was engineered to express the complete ORF with an expression tag. Expression varies depending on the nature of the gene.

Components: The ORF clone is ion-exchange column purified and shipped in a 2D barcoded Matrix tube containing 10ug of transfection-ready, dried plasmid DNA (reconstitute with 100 ul of water).

Reconstitution Method:

1. Centrifuge at 5,000xg for 5min.
2. Carefully open the tube and add 100ul of sterile water to dissolve the DNA.
3. Close the tube and incubate for 10 minutes at room temperature.
4. Briefly vortex the tube and then do a quick spin (less than 5000xg) to concentrate the liquid at the bottom.
5. Store the suspended plasmid at -20°C. The DNA is stable for at least one year from date of shipping when stored at -20°C.

Note: Plasmids are not sterile. For experiments where strict sterility is required, filtration with 0.22um filter is required.

RefSeq: [NM_001730.5](#)

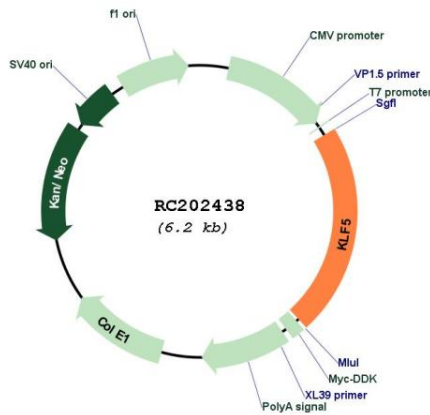
RefSeq Size: 3350 bp

RefSeq ORF: 1374 bp

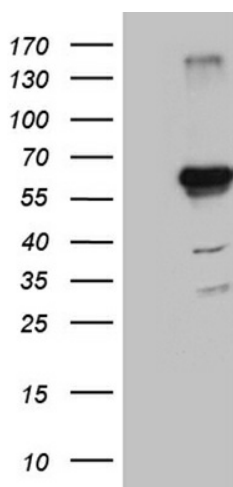
Locus ID: 688

UniProt ID: [Q13887](#)
Cytogenetics: 13q22.1
Domains: zf-C2H2
Protein Families: Embryonic stem cells, ES Cell Differentiation/IPS, Induced pluripotent stem cells, Transcription Factors
MW: 50.6 kDa
Gene Summary: This gene encodes a member of the Kruppel-like factor subfamily of zinc finger proteins. The encoded protein is a transcriptional activator that binds directly to a specific recognition motif in the promoters of target genes. This protein acts downstream of multiple different signaling pathways and is regulated by post-translational modification. It may participate in both promoting and suppressing cell proliferation. Expression of this gene may be changed in a variety of different cancers and in cardiovascular disease. Alternative splicing results in multiple transcript variants. [provided by RefSeq, Nov 2013]

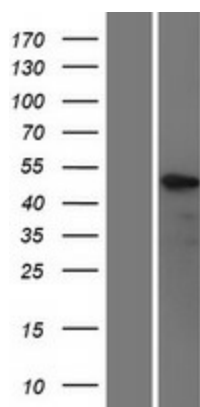
Product images:



Circular map for RC202438



HEK293T cells were transfected with the pCMV6-ENTRY control (Cat# [PS100001], Left lane) or pCMV6-ENTRY KLF5 (Cat# RC202438, Right lane) cDNA for 48 hrs and lysed. Equivalent amounts of cell lysates (5 ug per lane) were separated by SDS-PAGE and immunoblotted with anti-KLF5 (Cat# [TA811868]). Positive lysates [LY419775] (100ug) and [LC419775] (20ug) can be purchased separately from OriGene.



Western blot validation of overexpression lysate (Cat# [LY419775]) using anti-DDK antibody (Cat# [TA50011-100]). Left: Cell lysates from untransfected HEK293T cells; Right: Cell lysates from HEK293T cells transfected with RC202438 using transfection reagent MegaTran 2.0 (Cat# [TT210002]).