

Product datasheet for **RC202436**

CK1 epsilon (CSNK1E) (NM_152221) Human Tagged ORF Clone

Product data:

Product Type:	Expression Plasmids
Product Name:	CK1 epsilon (CSNK1E) (NM_152221) Human Tagged ORF Clone
Tag:	Myc-DDK
Symbol:	CK1 epsilon
Synonyms:	CK1ε; CK1εpsilon; HCK1E
Mammalian Cell Selection:	Neomycin
Vector:	pCMV6-Entry (PS100001)
E. coli Selection:	Kanamycin (25 ug/mL)
ORF Nucleotide Sequence:	>RC202436 ORF sequence Red=Cloning site Blue=ORF Green=Tags(s)

TTTTGTAATACGACTCACTATAGGGCGCCGGGAATTCGTCGACTGGATCCGGTACCGAGGAGATCTGCC
GCC**CGATCGCC**

ATGGAGCTACGTGTGGGAAACAAGTACCGCCTGGGACGGAAGATCGGGAGCGGGTCTTCGGAGATATCT
ACCTGGGTGCCAACATCGCCTCTGGTGAGGAAGTCGCCATCAAGCTGGAGTGTGTGAAGACAAAGCACCC
CCAGCTGCACATCGAGAGCAAGTTCTACAAGATGATGCAGGGTGGCGTGGGGATCCCGTCCATCAAGTGG
TGGGAGCTGAGGGCGACTACAACGTGATGGTCATGGAGCTGCTGGGCCTAGCCTCGAGGACCTGTTCA
ACTTCTGTCCCGCAAATTCAGCCTCAAGACGGTGTCTCTTGGCCGACCAGATGATCAGCCGCATCGA
GTATATCCAATCCAAGAATTCATCCACCGGGAGCTCAAGCCCGACAATTCCTCATGGGGCTGGGGAAG
AAGGGCAACCTGGTCTACATCATCGACTTCGGCCTGGCCAAGAAGTACCGGGACGCCCGCACCCACCAGC
ACATTCCTACCGGGAAAACAAGAACCTGACCGGCACGGCCCGCTACGCTTCCATCAACACGCACCTGGG
CATTGAGCAAAGCCGTCGAGATGACCTGGAGAGCCTGGGTACGTGCTCATGTACTTCAACCTGGGCTCC
CTGCCCTGGCAGGGGCTCAAAGCAGCCACCAAGCGCCAGAAGTATGAACGGATCAGCGAGAAGAAGATGT
CAACGCCCATCGAGGTCTCTGCAAAGGCTATCCCTCCGAATTCCAACATACCTCAACTTCTGCCGCTC
CCTGCGGTTTGACGACAAGCCCGACTACTCTTACCTACGTGAGTCTTCCGCAACCTCTTCCACCCGGCAG
GGCTTCTCCTATGACTACGTCTTTGACTGGAACATGCTGAAATTCGGTGCAGCCCGGAATCCCGAGGATG
TGGACCGGGAGCGCGAGAACACGAACCGGAGGAGAGGATGGGGCAGCTACGGGGGTCCGCGACCCGAGC
CCTGCCCCCTGGCCACCCACGGGGGCCACTGCCAACCGGCTCCGCAAGTCCCGCCGAGCCCGTGGCTTCC
ACGCCAGCCTCCCGCATCCAGCCGGCTGGCAATACTTCTCCAGAGCGATCTCGCGGGTCCAGCCGGGAGA
GGAAGGTGAGTATGAGGCTGCACAGGGGTGCGCCCGCCAACGTCTCTCCTCAGACCTACTGGCGGCA
AGAGGTCTCCCGATCCAGCCTCACAGACAAGTGTGCCATTTGACCATCTCGGGAAG

ACGGTACGGCGCCGCTCGAGCAGAACTCATCTCAGAAGAGGATCTGGCAGCAAATGATATCTGGATT
ACAAGGATGACGACGATAAGGTTTAA



[View online >](#)

Protein Sequence: >RC202436 protein sequence
Red=Cloning site Green=Tags(s)

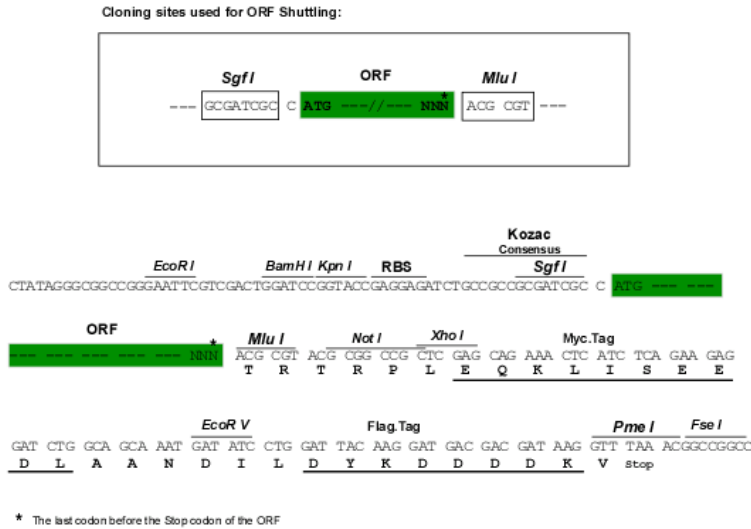
MELRVGNKYRLGRKIGSGSFGDIYLGANIASGEEVAIKLECVTKHPQLHIESKFYKMMQGGVGGIPSIKW
 CGAEGDYNVMVMEELLGPSLEDLNFNCSRKFSKLTVLLADQMISRIEYIHSKNFIHRDVKPDNFMGLGK
 KGNLVYIIDFGLAKKYRDARTHQHIPYRENKNTGTARYASINHLGIEQSRDDLESGLYVLMYFNLGS
 LPWQGLKAATKRQKYERISEKKMSTPIEVLCKGYSEFSTYLNFCRSLRFDDKPDYSYLRQLFRNLFHRQ
 GFYSYDYVFDWNMLKFGAARNPEDVDRERREHEREERMGQLRGSATRALPPGPPTGATANRLRSAEPVAS
 TPASRIQPAGNTSPRAISRVDREKRVSMRLHRGAPANVSSSDLTGRQEVSRI PASQTSVPPFDHLGK

TRTRPLEQKLISEEDLAANDILDYKDDDDKV

Chromatograms: https://cdn.origene.com/chromatograms/mk6151_h02.zip

Restriction Sites: SgfI-MluI

Cloning Scheme:



ACCN: NM_152221

ORF Size: 1248 bp

OTI Disclaimer: The molecular sequence of this clone aligns with the gene accession number as a point of reference only. However, individual transcript sequences of the same gene can differ through naturally occurring variations (e.g. polymorphisms), each with its own valid existence. This clone is substantially in agreement with the reference, but a complete review of all prevailing variants is recommended prior to use. [More info](#)

OTI Annotation: This clone was engineered to express the complete ORF with an expression tag. Expression varies depending on the nature of the gene.

Components: The ORF clone is ion-exchange column purified and shipped in a 2D barcoded Matrix tube containing 10ug of transfection-ready, dried plasmid DNA (reconstitute with 100 ul of water).

Reconstitution Method:

1. Centrifuge at 5,000xg for 5min.
2. Carefully open the tube and add 100ul of sterile water to dissolve the DNA.
3. Close the tube and incubate for 10 minutes at room temperature.
4. Briefly vortex the tube and then do a quick spin (less than 5000xg) to concentrate the liquid at the bottom.
5. Store the suspended plasmid at -20°C. The DNA is stable for at least one year from date of shipping when stored at -20°C.

Note: Plasmids are not sterile. For experiments where strict sterility is required, filtration with 0.22um filter is required.

RefSeq: [NM_152221.3](#)

RefSeq Size: 2820 bp

RefSeq ORF: 1251 bp

Locus ID: 1454

UniProt ID: [P49674](#)

Cytogenetics: 22q13.1

Domains: pkinase, TyrKc, S_TKc

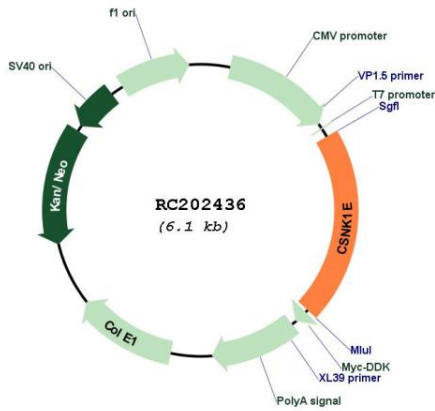
Protein Families: Druggable Genome, Protein Kinase

Protein Pathways: Circadian rhythm - mammal, Hedgehog signaling pathway, Wnt signaling pathway

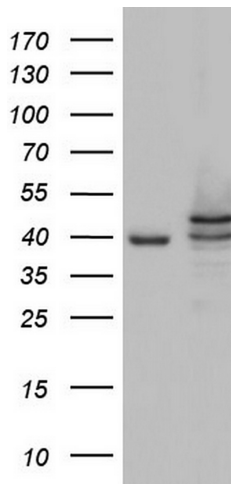
MW: 47.3 kDa

Gene Summary: The protein encoded by this gene is a serine/threonine protein kinase and a member of the casein kinase I protein family, whose members have been implicated in the control of cytoplasmic and nuclear processes, including DNA replication and repair. The encoded protein is found in the cytoplasm as a monomer and can phosphorylate a variety of proteins, including itself. This protein has been shown to phosphorylate period, a circadian rhythm protein. Two transcript variants encoding the same protein have been found for this gene. [provided by RefSeq, Feb 2014]

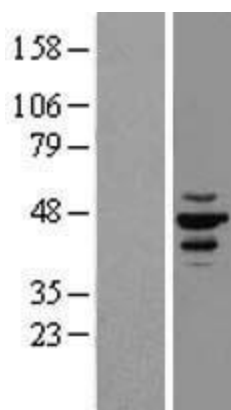
Product images:



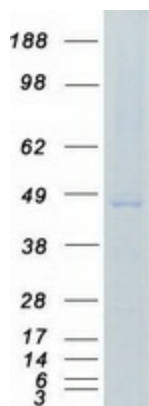
Circular map for RC202436



HEK293T cells were transfected with the pCMV6-ENTRY control (Cat# [PS100001], Left lane) or pCMV6-ENTRY CSNK1E (Cat# RC202436, Right lane) cDNA for 48 hrs and lysed. Equivalent amounts of cell lysates (5 ug per lane) were separated by SDS-PAGE and immunoblotted with anti-CSNK1E (Cat# [TA803799]). Positive lysates [LY403455] (100ug) and [LC403455] (20ug) can be purchased separately from OriGene.



Western blot validation of overexpression lysate (Cat# [LY403455]) using anti-DDK antibody (Cat# [TA50011-100]). Left: Cell lysates from untransfected HEK293T cells; Right: Cell lysates from HEK293T cells transfected with RC202436 using transfection reagent MegaTran 2.0 (Cat# [TT210002]).



Coomassie blue staining of purified CSNK1E protein (Cat# [TP302436]). The protein was produced from HEK293T cells transfected with CSNK1E cDNA clone (Cat# RC202436) using MegaTran 2.0 (Cat# [TT210002]).