

Product datasheet for **RC202433**

Leukotriene B4 Receptor (LTB4R) (NM_181657) Human Tagged ORF Clone

Product data:

Product Type:	Expression Plasmids
Product Name:	Leukotriene B4 Receptor (LTB4R) (NM_181657) Human Tagged ORF Clone
Tag:	Myc-DDK
Symbol:	Leukotriene B4 Receptor
Synonyms:	BLT1; BLTR; CMKRL1; GPR16; LTB4R1; LTBR1; P2RY7; P2Y7
Mammalian Cell Selection:	Neomycin
Vector:	pCMV6-Entry (PS100001)
E. coli Selection:	Kanamycin (25 ug/mL)
ORF Nucleotide Sequence:	>RC202433 ORF sequence Red=Cloning site Blue=ORF Green=Tags(s)

TTTTGTAATACGACTCACTATAGGGCGGCCGGAATTCGTCGACTGGATCCGGTACCGAGGAGATCTGCC
GCC**CGATCGCC**

ATGAACACTACATCTTCTGCAGCACCCCTCACTAGGTGTAGAGTTCATCTCTCTGCTGGCTATCATCC
TGCTGTCAGTGGCGCTGGCTGTGGGGCTTCCCGCAACAGCTTTGTGGTGTGGAGTATCTGAAAAGGAT
GCAGAAGCGCTCTGCTCACTGCCCTGATGGTGTGAACCTGGCCCTGGCCGACCTGGCCGATTGCTCACT
GCTCCCTTTTTCCTTCACTTCTGGCCCAAGGCACCTGGAGTTTTGGACTGGCTGGTTGCCGCTGTGTC
ACTATGTCTGCGGAGTCAGCATGTACGCCAGCGTCCTGCTTATCACGGCCATGAGTCTAGACCGCTCACT
GGCGGTGGCCCGCCCTTTGTGTCCAGAACTACGCACCAAGGCGATGGCCCGGCGGTGCTGGCAGGC
ATCTGGGTGTTGTCTTTCTGCTGGCCACACCCGTCCTCGCGTACCGCACAGTAGTGCCTGGAAAACGA
ACATGAGCCTGTGCTTCCCGCGGTACCCAGCGAAGGGCACCGGGCCTTCCATCTAATCTTCGAGGCTGT
CACGGGCTTCTGCTGCCCTTCTGGCTGTGGTGGCCAGTACTCGGACATAGGGCGTCGGCTACAGGCC
CGGCGCTTCCGCCGACCGCCGACCGGCCGCTGGTGGTGTGCTCATCATCTGACCTTCGCCGCTTCT
GGCTGCCCTACCACGTGGTGAACCTGGCTGAGGCGGGCCGCGCTGGCCGGCCAGGCCCGGGTTAGG
GCTCGTGGGAAGCGGCTGAGCCTGGCCGCAACGTGCTCATCGCACTCGCTTCTGAGCAGCAGCGTG
AACCCCGTGTACGCGTGCGCCGCGCGGCTGCTGCGCTCGGCGGGCGTGGGCTTCGTCGCCAAGC
TGCTGGAGGGCACGGGCTCCGAGGCGTCCAGCACGCGCCGCGGGGACAGCCTGGGCCAGACCGCTAGGAG
CGGCCCGCGCTTTGGAGCCCGCCCTTCCGAGAGCCTCACTGCCTCCAGCCCTTCAAGTTAAACGAA
CTGAAC

AG**CGGACCG**ACGCGTACGCGGCCGCTCGAGCAGAACTCATCTCAGAAGAGGATCTGGCAGCAAATGATATCC
TGGATTACAAGGATGACGACGATAAGGTTAA



[View online »](#)

Protein Sequence: >RC202433 protein sequence
Red=Cloning site Green=Tags(s)

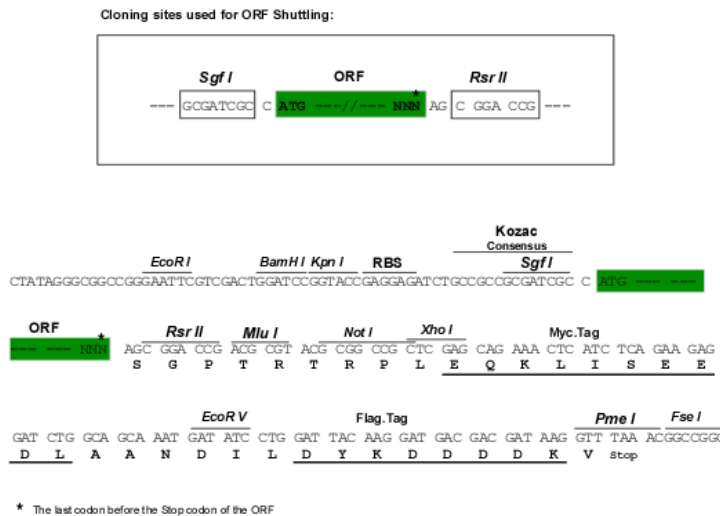
MNTTSSAAPPSLGVFISLLAIILL SVALAVGLPGNSFVWVSILKRMQKRSVTALMVLNLALADLAVLLT
 APFFLHFLAQTWSFGLAGCRLCHYVCGVSMYASVLLITAMSLDRSLAVARPFVSQLRRTKAMARRVLAG
 IWVLSFLLATPVLAYRTVVPWKTNMSLCFPRYPSEGHRAFHLIFEAVTGFLLPFLAVVASYSIDIGRRLQA
 RFRFRSRRTGRLVVLIIILTFAAFWLPYHVVNLAEAGRALAGQAAGLGLVGKRLSLARNVLI ALAFLSSSV
 NPVLYACAGGGLLR SAGVGFVAKLLEGTGSEASSTRGGSLGQTARSGPAALEPGPSESLTASSPFKLINE
 LN

SGPTRTRPLEQKLI SEEDLAANDILDYKDDDDKV

Chromatograms: https://cdn.origene.com/chromatograms/mk6190_e07.zip

Restriction Sites: SgfI-RsrII

Cloning Scheme:



ACCN: NM_181657

ORF Size: 1056 bp

OTI Disclaimer: The molecular sequence of this clone aligns with the gene accession number as a point of reference only. However, individual transcript sequences of the same gene can differ through naturally occurring variations (e.g. polymorphisms), each with its own valid existence. This clone is substantially in agreement with the reference, but a complete review of all prevailing variants is recommended prior to use. [More info](#)

OTI Annotation: This clone was engineered to express the complete ORF with an expression tag. Expression varies depending on the nature of the gene.

Components: The ORF clone is ion-exchange column purified and shipped in a 2D barcoded Matrix tube containing 10ug of transfection-ready, dried plasmid DNA (reconstitute with 100 ul of water).

Reconstitution Method:

1. Centrifuge at 5,000xg for 5min.
2. Carefully open the tube and add 100ul of sterile water to dissolve the DNA.
3. Close the tube and incubate for 10 minutes at room temperature.
4. Briefly vortex the tube and then do a quick spin (less than 5000xg) to concentrate the liquid at the bottom.
5. Store the suspended plasmid at -20°C. The DNA is stable for at least one year from date of shipping when stored at -20°C.

Note: Plasmids are not sterile. For experiments where strict sterility is required, filtration with 0.22um filter is required.

RefSeq: [NM_181657.3](#)

RefSeq Size: 4331 bp

RefSeq ORF: 1059 bp

Locus ID: 1241

UniProt ID: [Q15722](#)

Cytogenetics: 14q12

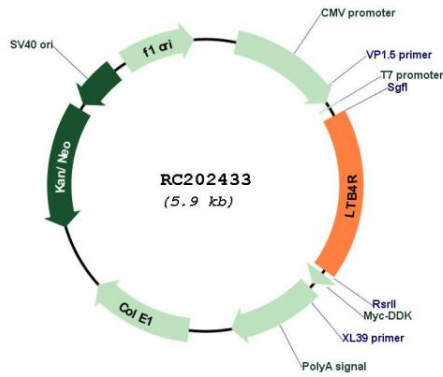
Protein Families: Druggable Genome, GPCR, Transmembrane

Protein Pathways: Neuroactive ligand-receptor interaction

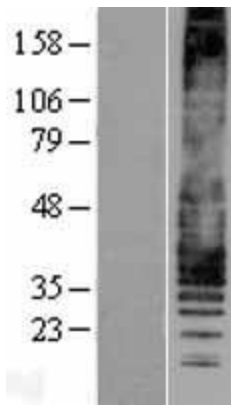
MW: 37.6 kDa

Gene Summary: Receptor for extracellular ATP > UTP and ADP. The activity of this receptor is mediated by G proteins which activate a phosphatidylinositol-calcium second messenger system. May be the cardiac P2Y receptor involved in the regulation of cardiac muscle contraction through modulation of L-type calcium currents. Is a receptor for leukotriene B4, a potent chemoattractant involved in inflammation and immune response.[UniProtKB/Swiss-Prot Function]

Product images:



Circular map for RC202433



Western blot validation of overexpression lysate (Cat# [LY428406]) using anti-DDK antibody (Cat# [TA50011-100]). Left: Cell lysates from untransfected HEK293T cells; Right: Cell lysates from HEK293T cells transfected with [RC227473] using transfection reagent MegaTran 2.0 (Cat# [TT210002]).