

## Product datasheet for **RC202430**

### RGS16 (NM\_002928) Human Tagged ORF Clone

#### Product data:

**Product Type:** Expression Plasmids  
**Product Name:** RGS16 (NM\_002928) Human Tagged ORF Clone  
**Tag:** Myc-DDK  
**Symbol:** RGS16  
**Synonyms:** A28-RGS14; A28-RGS14P; RGS-R  
**Mammalian Cell Selection:** Neomycin  
**Vector:** pCMV6-Entry (PS100001)  
**E. coli Selection:** Kanamycin (25 ug/mL)  
**ORF Nucleotide Sequence:** >RC202430 ORF sequence  
 Red=Cloning site Blue=ORF Green=Tags(s)

TTTTGTAATACGACTCACTATAGGGCGCCGGGAATTCGTCGACTGGATCCGGTACCGAGGAGATCTGCC  
 GCC**CGATCGCC**

ATGTGCCGCACCCTGGCCGCTTCCCCACCACCTGCCTGGAGAGAGCCAAAGAGTTCAAGACACGTCTGG  
 GGATCTTTCTTCACAAATCAGAGCTGGGCTGCGATACTGGGAGTACTGGCAAGTTCGAGTGGGGCAGTAA  
 ACACAGCAAAGAGAATAGAACTTCTCAGAAGATGTGCTGGGGTGGAGAGAGTTCGTTCCGACTGCTGCTG  
 AGCAGTAAAAATGGAGTGGCTGCCTTCCACGCTTCTCTGAAGACAGAGTTCAGTGAGGAGAACCTGGAGT  
 TCTGGCTGGCCTGTGAGGAGTTCAGAAGATCCGATCAGCTACCAAGCTGGCCTCCAGGGCACACCAGAT  
 CTTTGAGGAGTTCATTTGCAGTGAGGCCCTAAAGAGGTCAACATTGACCATGAGACCCGCGAGCTGACG  
 AGGATGAACCTGCAGACTGCCACAGCCACATGCTTTGATGCGGGCTCAGGGGAAGACAGTACCCTGATGG  
 AGAAGGACTCCTACCCACGCTTCTGAAGTCGCTGCTTACCGGGACCTGGCTGCCAAGCCTCAGCCGC  
 CTCTGCCACTCTGTCCAGCTGCAGCCTGGACGAGCCCTCACACACC

**ACGCGT**ACGCGGCCGCTCGAGCAGAACTCATCTCAGAAGAGGATCTGGCAGCAAATGATATCCTGGATT  
 ACAAGGATGACGACGATAAGGTTTAA

**Protein Sequence:** >RC202430 protein sequence  
 Red=Cloning site Green=Tags(s)

MCRTLAAFPTTCLERAKEFKTRLGIFLHKSELGCDTGSTGKFEWGSKHSKENRNFSEDLGWRESFDLLL  
 SSKNGVAAFHAFKTEFSEENLEFWLACEEFKIRSATKLASRAHQIFEEFICSEAPKEVNIHETRELT  
 RMNLQTATATCFDAAQKTRTLMEKDSYPRFLKSPAYRDLAAQASAASATLSSCSLDEPSHT

**TRTRPLEQKLI**SEEDLAANDILDYKDDDDKV

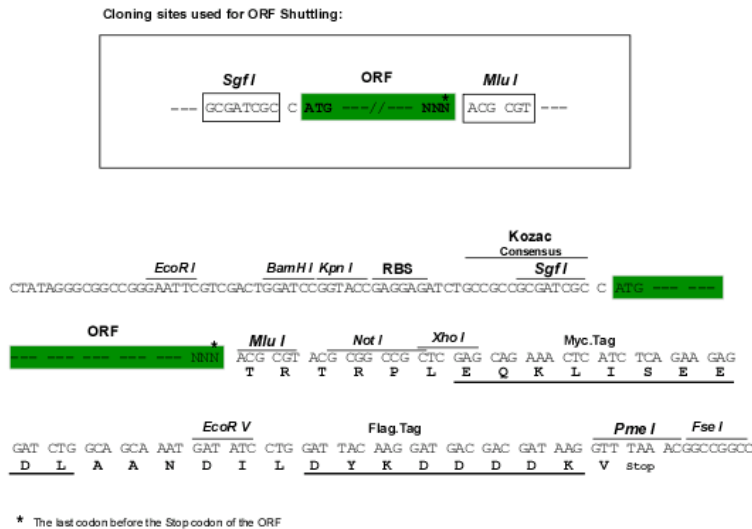


[View online »](#)

**Chromatograms:** [https://cdn.origene.com/chromatograms/mk6410\\_c12.zip](https://cdn.origene.com/chromatograms/mk6410_c12.zip)

**Restriction Sites:** SgfI-MluI

**Cloning Scheme:**



**ACCN:** NM\_002928

**ORF Size:** 606 bp

**OTI Disclaimer:** The molecular sequence of this clone aligns with the gene accession number as a point of reference only. However, individual transcript sequences of the same gene can differ through naturally occurring variations (e.g. polymorphisms), each with its own valid existence. This clone is substantially in agreement with the reference, but a complete review of all prevailing variants is recommended prior to use. [More info](#)

**OTI Annotation:** This clone was engineered to express the complete ORF with an expression tag. Expression varies depending on the nature of the gene.

**Components:** The ORF clone is ion-exchange column purified and shipped in a 2D barcoded Matrix tube containing 10ug of transfection-ready, dried plasmid DNA (reconstitute with 100 ul of water).

**Reconstitution Method:**

1. Centrifuge at 5,000xg for 5min.
2. Carefully open the tube and add 100ul of sterile water to dissolve the DNA.
3. Close the tube and incubate for 10 minutes at room temperature.
4. Briefly vortex the tube and then do a quick spin (less than 5000xg) to concentrate the liquid at the bottom.
5. Store the suspended plasmid at -20°C. The DNA is stable for at least one year from date of shipping when stored at -20°C.

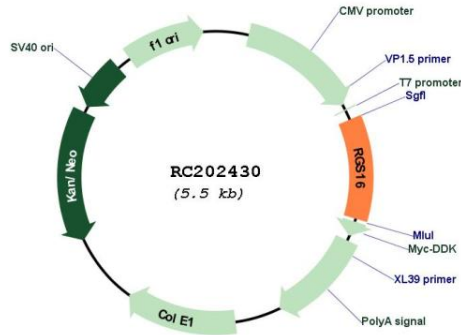
**Note:** Plasmids are not sterile. For experiments where strict sterility is required, filtration with 0.22um filter is required.

**RefSeq:** [NM\\_002928.2](#), [NP\\_002919.2](#)

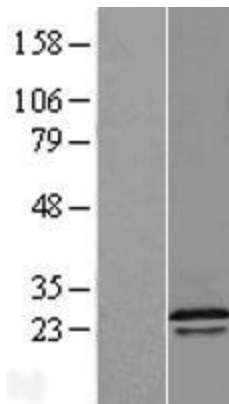
**RefSeq Size:** 2432 bp

RefSeq ORF:	609 bp
Locus ID:	6004
UniProt ID:	<a href="#">O15492</a>
Cytogenetics:	1q25.3
Domains:	RGS
Protein Families:	Druggable Genome
MW:	22.8 kDa
Gene Summary:	The protein encoded by this gene belongs to the 'regulator of G protein signaling' family. It inhibits signal transduction by increasing the GTPase activity of G protein alpha subunits. It also may play a role in regulating the kinetics of signaling in the phototransduction cascade. [provided by RefSeq, Jul 2008]

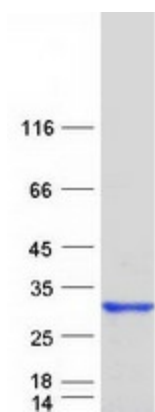
### Product images:



Circular map for RC202430



Western blot validation of overexpression lysate (Cat# [LY419009]) using anti-DDK antibody (Cat# [TA50011-100]). Left: Cell lysates from untransfected HEK293T cells; Right: Cell lysates from HEK293T cells transfected with RC202430 using transfection reagent MegaTran 2.0 (Cat# [TT210002]).



Coomassie blue staining of purified RGS16 protein (Cat# [TP302430]). The protein was produced from HEK293T cells transfected with RGS16 cDNA clone (Cat# RC202430) using MegaTran 2.0 (Cat# [TT210002]).