

## Product datasheet for RC202429

### SCGF (CLEC11A) (NM\_002975) Human Tagged ORF Clone

#### Product data:

Product Type:	Expression Plasmids
Product Name:	SCGF (CLEC11A) (NM_002975) Human Tagged ORF Clone
Tag:	Myc-DDK
Symbol:	SCGF
Synonyms:	CLECSF3; LSLCL; P47; SCGF
Mammalian Cell Selection:	Neomycin
Vector:	pCMV6-Entry (PS100001)
E. coli Selection:	Kanamycin (25 ug/mL)
ORF Nucleotide Sequence:	>RC202429 ORF sequence Red=Cloning site Blue=ORF Green=Tags(s)

TTTTGTAATACGACTCACTATAGGGCGGCCGGAATTCGTCGACTGGATCCGGTACCGAGGAGATCTGCC  
GCC**CGGATCGCC**

ATGCAGGCAGCCTGGCTTTTGGGGCTTTGGTGGTCCCCAGCTCTTGGGCTTTGGCCATGGGGCTCGGG  
GAGCAGAGAGGGAGTGGGAGGGAGGCTGGGAGGTGCCAGGAGGAGGAGCGGGAGAGGGAGGCCCTGAT  
GCTGAAGCATCTGCAGGAAGCCCTAGGACTGCCTGCTGGGAGGGGGATGAGAATCCTGCCGAACTGTT  
GAGGGAAAAGAGGACTGGGAGATGGAGGAGGACCAGGGGGAGGAAGAGGAGGAGGAAGCAACGCCAACCC  
CATCCTCCGGCCCGAGCCCTCTCCACCCTGAGGACATCGTCACTTACATCCTGGGCCGCTGGCCGG  
CCTGGACGCAGGCCTGCACCAGCTGCACGTCCGTCTGCACGCGTTGGACACCCGCGTGGTCGAGTGACC  
CAGGGGCTGCGGCAGCTGCGGAACGCGGAGGCGACACCCGCGATGCCGTGCAAGCCCTGCAGGAGGCGC  
AGGGTCGCGCCGAGCGGAGCACGGCCGCTTGGAGGGCTGCCTGAAGGGGCTGCGCTGGGCCACAAGTG  
CTTCTGCTCTCGCGGACTTCGAAGCTCAGGCGCGGCGCAGGCGCGGTGCACGGCGGGGGCGGGAGC  
CTGGCGCAGCCGGCAGACCGCCAGCAGATGGAGGCGTCACTCGGTACCTGCGCGCGGCGCTCGCTCCCT  
ACAAGTGGCCCGTGTGGCTGGGCGTGCACGATCGGCGCGCCGAGGGCCTTACCTCTTCAAACCGCCA  
GCGCGTGTCTTCTCGCTGGCATCGCTACCCCGCCCCGAGCTCGGCGCCAGCCAGCGCCTCGCCG  
CATCCGCTCAGCCCGACAGCCCAACGGTGGCACGCTCGAGAAGTGGTGGCGCCAGCCCTTGACGAGC  
GCTCCTGGTGGGACCAGACTGCCAGCGGCTCTACTACGTCTGCGAGTTCCTCCCTT

AC**GGGGCCG**CTCGAGCAGAACTCATCTCAGAAGAGGATCTGGCAGCAAATGATATCCTGGA  
TTACAAGGATGACGACGATAAGGTTTAA



[View online »](#)

**Protein Sequence:** >RC202429 protein sequence  
Red=Cloning site Green=Tags(s)

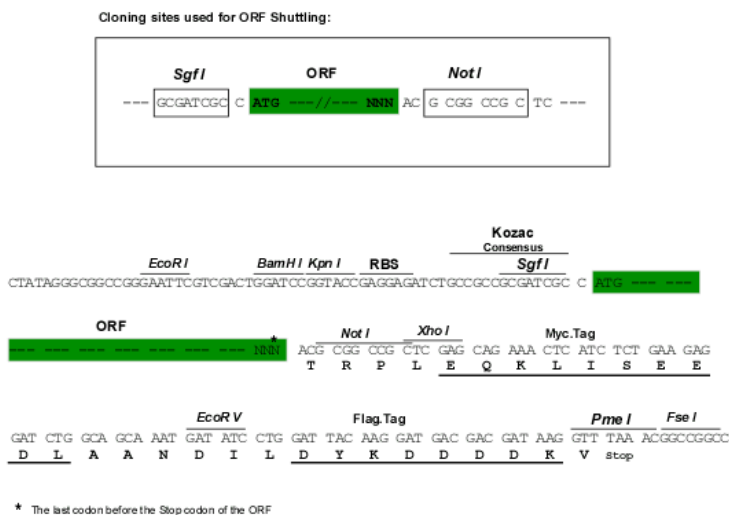
MQAAWLLGALVVPQLLGFHGHGARGAEREWEWGGGAQEEEREREALMLKHLQEALGLPAGRGDENPAGTV  
 EGKEDWEMEEDQGEHEEEATPTPSSGSPSPPTPEDIVTYILGRLAGLDAGLHQLHVRLHALDTRVVELT  
 QGLRQLRNAAGDTRDAVQALQEAQGRAEREHGRLEGLKGLRLGHKCFLLSRDFEAQAAAQARCTARGGS  
 LAQPADRQMEALTRYLRAALAPYNWPVWLGVHDDRRAEGLYLFENGQRVSFFAWHRSPRPELGAQPSASP  
 HPLSPDQPNGGTLENCVAQASDDGSWWDHDCQRRLLYYVCFEPF

TRPLEQKLISEEDLAANDILDYKDDDDKV

**Chromatograms:** [https://cdn.origene.com/chromatograms/mk6274\\_d11.zip](https://cdn.origene.com/chromatograms/mk6274_d11.zip)

**Restriction Sites:** SgfI-NotI

**Cloning Scheme:**



**ACCN:** NM\_002975

**ORF Size:** 969 bp

**OTI Disclaimer:** The molecular sequence of this clone aligns with the gene accession number as a point of reference only. However, individual transcript sequences of the same gene can differ through naturally occurring variations (e.g. polymorphisms), each with its own valid existence. This clone is substantially in agreement with the reference, but a complete review of all prevailing variants is recommended prior to use. [More info](#)

**OTI Annotation:** This clone was engineered to express the complete ORF with an expression tag. Expression varies depending on the nature of the gene.

**Components:** The ORF clone is ion-exchange column purified and shipped in a 2D barcoded Matrix tube containing 10ug of transfection-ready, dried plasmid DNA (reconstitute with 100 ul of water).

**Reconstitution Method:**

1. Centrifuge at 5,000xg for 5min.
2. Carefully open the tube and add 100ul of sterile water to dissolve the DNA.
3. Close the tube and incubate for 10 minutes at room temperature.
4. Briefly vortex the tube and then do a quick spin (less than 5000xg) to concentrate the liquid at the bottom.
5. Store the suspended plasmid at -20°C. The DNA is stable for at least one year from date of shipping when stored at -20°C.

**RefSeq:** [NM\\_002975.3](#)

**RefSeq Size:** 1423 bp

**RefSeq ORF:** 972 bp

**Locus ID:** 6320

**UniProt ID:** [Q9Y240](#)

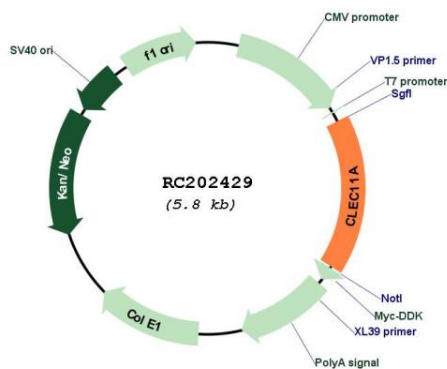
**Cytogenetics:** 19q13.33

**Protein Families:** Druggable Genome, Secreted Protein

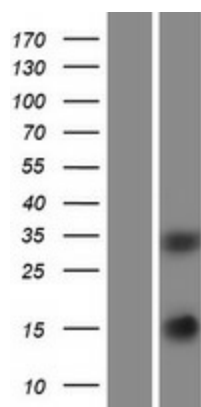
**MW:** 35.7 kDa

**Gene Summary:** This gene encodes a member of the C-type lectin superfamily. The encoded protein is a secreted sulfated glycoprotein and functions as a growth factor for primitive hematopoietic progenitor cells. An alternative splice variant has been described but its biological nature has not been determined. [provided by RefSeq, Jul 2008]

## Product images:



Circular map for RC202429



Western blot validation of overexpression lysate (Cat# [LY418980]) using anti-DDK antibody (Cat# [TA50011-100]). Left: Cell lysates from untransfected HEK293T cells; Right: Cell lysates from HEK293T cells transfected with RC202429 using transfection reagent MegaTran 2.0 (Cat# [TT210002]).